

Breadcrumb

1. [Home](#)
2. Print
3. Pdf
4. Node
5. Entity Print

Swine Identification

Last Modified:



APHIS is offering no-cost radio frequency identification (RFID) eartags to eligible swine producers. This program will enhance the speed and accuracy of disease response efforts across the swine industry.

APHIS has awarded a contract to [Merck Animal Health](#) to supply up to \$20 million in [RFID tags](#) over the next 5 years. These tags are intended for use in the **sow** and

exhibition swine sectors.

What sets this program apart is its **direct-to-premises distribution model**—tags will be shipped directly from the manufacturer to the producer, streamlining access and reducing delays.

Who Can Order

- Commercial Sow Facilities
- Exhibition Swine Facilities
- State Animal Health Officials

To qualify, requesters must:

- Have a valid [premises identification number](#) (PIN).
- Provide shipping and contact information.
- Report the number of sows or show pigs onsite.

Tag Ordering Guidelines

Number of Sows on Premises Maximum Number of Tags per Year

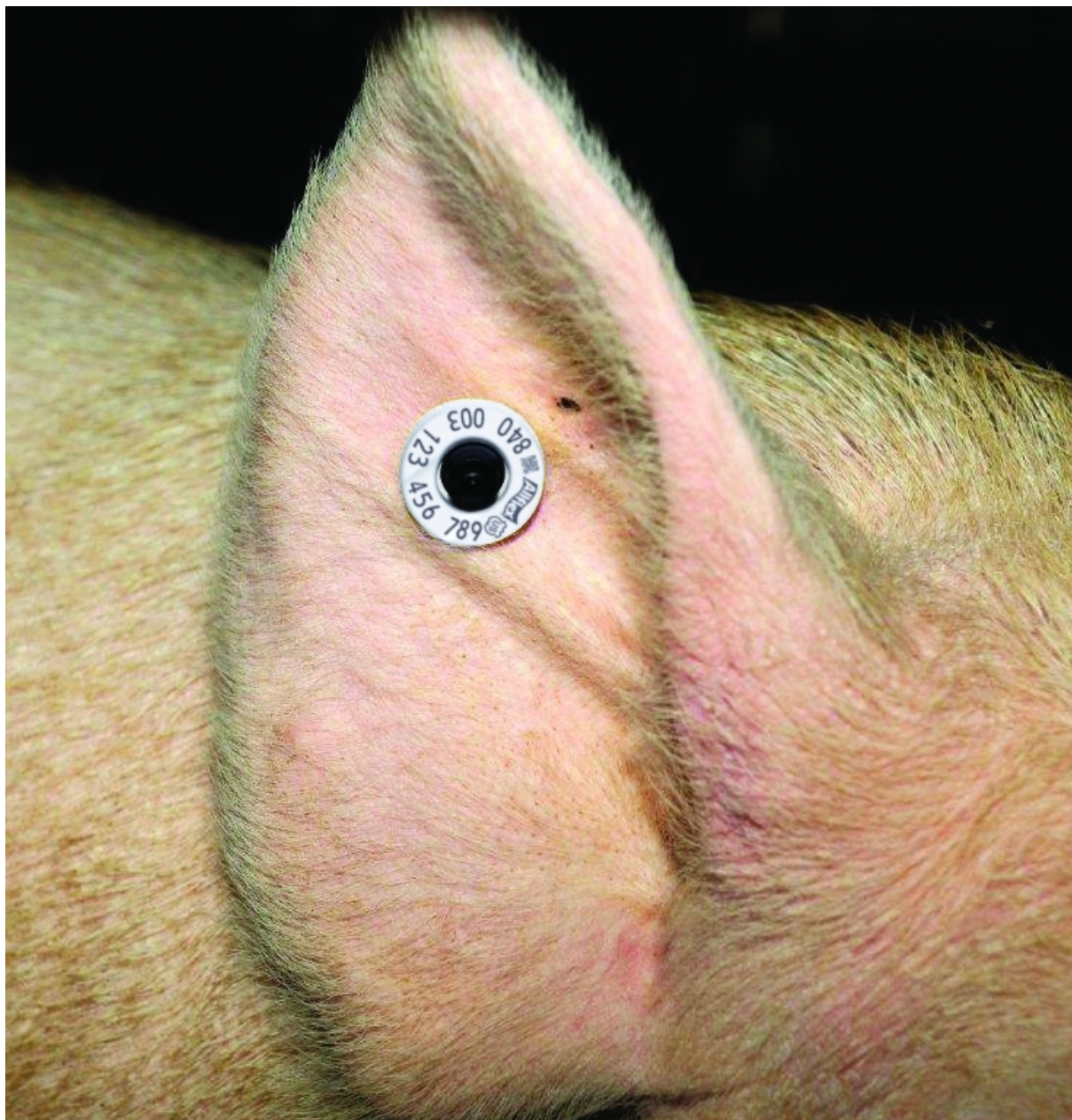
| | |
|-------------|-------|
| 1-500 | 500 |
| 501-999 | 750 |
| 1,000-4,999 | 1,500 |
| 5,000-9,999 | 3,000 |
| 10,000+ | 6,000 |

The number of half duplex (HDX) RFID eartags available each year at no cost through this program varies by group.

- **Sow Producers:** The maximum number of tags is based on the number of sows at a premises, as shown in the table.
- **Exhibition Swine Producers:** You may order tags for all swine on your premises.
- **State Animal Health Officials (SAHOs):** You may request tags for up to 50% of your State's breeding sow population, as reported by [USDA's National](#)

[Agricultural Statistics Service.](#)

[Order Tags Now!](#)



[Print](#)