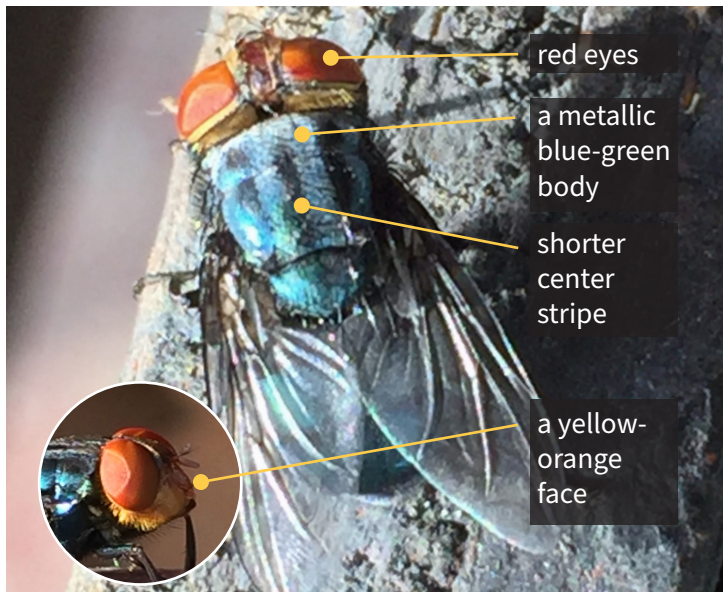




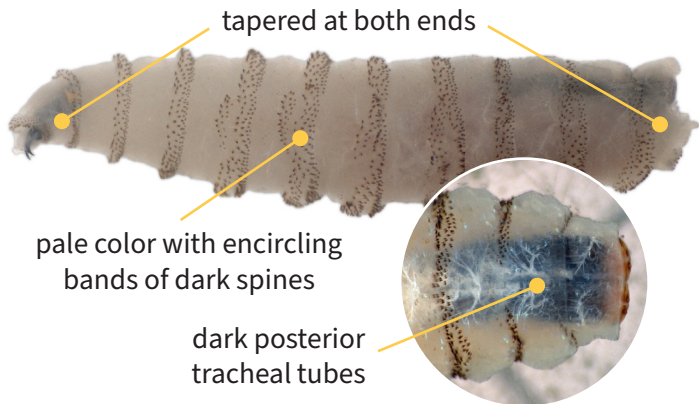
Animal and Plant Health Inspection Service
U.S. DEPARTMENT OF AGRICULTURE

New World Screwworm

New World screwworm is a devastating pest that can affect livestock, pets, wildlife, occasionally birds, and in rare cases, people. Adult screwworm flies are about the size of a common housefly (or slightly larger).



Screwworm larvae (maggots) burrow into a wound, feeding as they go like a screw driving into wood. The maggots cause extensive damage by tearing at the hosts' tissue with sharp mouth hooks. The wound becomes deeper and larger as more maggots hatch and feed on living tissue.



Scan the QR code to learn more about this pest. Immediately report signs to your State Animal Health Official (www.usaha.org/saho/) or USDA Area Veterinarian in Charge (www.aphis.usda.gov/contact/animal-health)