



New World Screwworm

Best Practices for Evaluation of Animals for NWS

This guidance document provides best practices when clinically evaluating animals for evidence of screwworm infestation. It is a supplement to the [Foreign Animal Disease Investigation \(FADI\) Manual](#) and the [NWS FADI Guide](#).

General Considerations

This checklist is not species specific and is not all inclusive of a thorough physical exam conducted by a veterinary professional (i.e., does not include assessment of cardiovascular, respiratory, digestive system, etc.). Please check with [State Animal Health Official](#) and/or APHIS VS [Area Veterinarian in Charge](#) about specific regulations within your state. If you are moving animals, please reference [NWS Pre-movement Animal Inspection Checklist](#).

Inspection

Note: Ensure that samples are properly collected and packaged per the [NWS FADI Manual](#). Call NVSL at (515) 337- 7953 if you are unsure or have additional questions.

Special Equipment and Supplies:

- Species specific restraint
ex: halter, hog snare, chute, etc.
- If maggots (larvae) are found, collection supplies:
 - 70% ethanol/isopropyl alcohol
 - Forceps
 - Submission form ([VS 5-38](#))
- Light source (flashlight or phone)
- Method to record inspection findings

Inspection

Use appropriate restraint devices to allow for thorough animal inspection. If the animal(s) can't be handled, consider administering sedation.

Make note of the animal's overall appearance, state of health, signalment (breed, age, sex), recent history such as travel, etc. Use light source if needed throughout.

Inspect the following key areas of the animal's body:

Head and Neck

- Nostrils
- Eyes, especially around lid margins & medial canthus
- Ears: canals (may need flashlight or otoscope), pinna
- Horns or antlers - base, velvet
- Mouth & under tongue (if possible)

Trunk (thorax and abdomen)

- Chest, including dewlap, brisket
- Between folds of skin, under wool or mane
- Axilla ("armpit")
- Underside of the abdomen (belly)
- Mammary glands, teats
- Genitalia (e.g. prepuce and urethral fossa, cloaca)
- Around and under tailhead
- Anus

Limbs

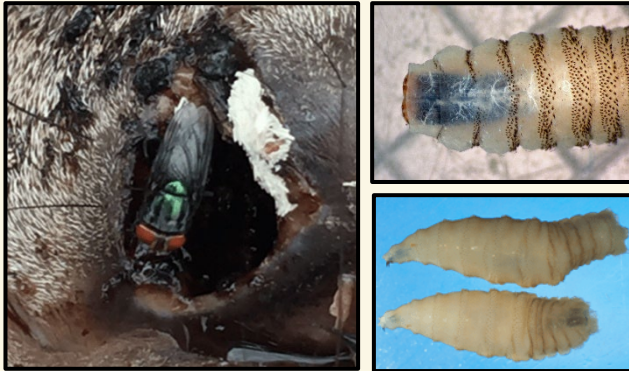
- Legs
- Hooves including coronary bands, between claws, bottom of soles

Areas/conditions needing close inspection – wounds, surgical sites, etc.

- Umbilicus on newborns
- Recent castration site
- Recent docked tail end
- Recent branding site
- Recent ear tagging or notching sites
- Other wounds (animal bites, wire cuts, sunburn, ticks, fly strike, etc.)



If you see a maggot (larvae)...



1. Contact [SAHO](#) and/or [AVIC](#) regarding the suspected NWS infestation.
2. Collect maggots of multiple sizes and depths
3. Place each animal's sample in a separate tube labeled with:
 - Owner's Name
 - Animal ID
 - Collection Date
 - Collection Location
4. Fill tube with 70% ethanol/isopropyl alcohol.
5. Submit using [VS 5-38](#) with assistance from the SAHO or the APHIS VS AVIC.

Treatment

- Consult a veterinarian to treat the myiasis by removing **all** maggots, cleaning and treating wounds, providing supportive care and antibiotics if needed.
- Treatments must be performed by or under the direct supervision of a veterinarian.
- Follow FDA and EPA labeling on NWS animal drugs and pesticides that can be used in animals to kill the maggots.
- Kill all eggs, maggots, pupae, and adults that are not submitted to the lab by placing them in ethanol or isopropyl alcohol in a tube and then closing within a sealed container, such as a Ziploc bag, prior to disposal.

FDA/EPA Animal Drug/Pesticide Resources

- [EPA NWS Pesticides](#)
- [FDA NWS Animal Drugs Website](#)
- [FDA Extralabel Use of Animal Drugs for NWS](#)

Personal Protection

- Wear appropriate personal protective equipment (PPE); refer to the [FADI Manual](#).
For NWS, we recommend, at a minimum, using latex or nitrile gloves.
- Keep open wounds (including cuts and scratches) clean and covered.
- If you see or feel maggots (larvae) in or on a wound or other area of your body, contact your healthcare provider immediately and report the potential infestation to your supervisor.

More Information

The [NWS FAD PReP website](#) will be updated with new NWS response and policy guidance during the outbreak; please review documents frequently as procedures change. Please also see the [APHIS NWS website](#).

If you suspect an NWS infestation, contact your [State Animal Health Official](#) and/or the [APHIS Area Veterinarian in Charge](#).