

Breadcrumb

1. [Home](#)
2. Print
3. Pdf
4. Node
5. Entity Print

# Pest Information for South Dakota

Last Modified:

## Active Federal Quarantines

The following pests have Federal quarantines in certain areas of this State. Other Federal and State quarantines may apply. Learn about [State-level quarantines](#).

[Asian Longhorned Beetle](#)

[Attacks: hardwood trees, national forests](#)



[Citrus Greening and Asian Citrus Psyllid](#)

[Attacks: citrus trees](#)



[Imported Fire Ants](#)

[Attacks: buds and fruits of crop plants](#)



[Mediterranean Fruit Fly](#)

[Attacks: fruits, vegetables and nuts](#)



[Mexican Fruit Fly](#)

[Attacks: fruits, particularly citrus and mango](#)



[Oriental Fruit Fly](#)

[Attacks: fruits and vegetables](#)



[Spongy Moth](#)

[Attacks: trees and shrubs](#)



[Sudden Oak Death](#)

[Attacks: trees](#)



UGA1427111

## Watch Out For These Pests

This state has some crop, forest, or urban area(s) where the following pests or diseases could survive year-round.

[Asian Longhorned Beetle](#)

[Attacks: hardwood trees, national forests](#)



[Citrus Greening and Asian Citrus Psyllid](#)

[Attacks: citrus trees](#)



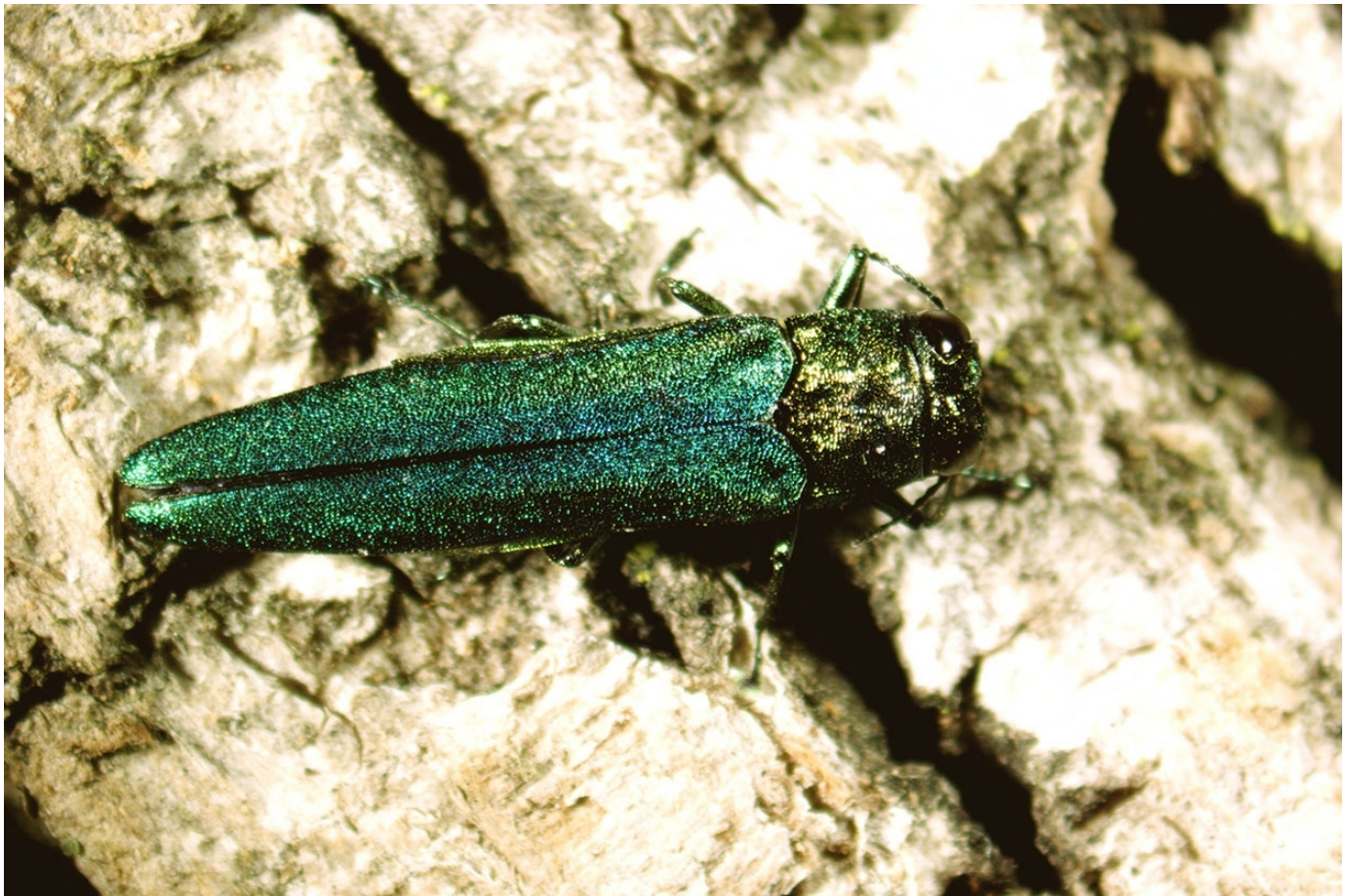
[Coconut Rhinoceros Beetle](#)

[Attacks: palm trees, including coconut, date, and oil palms](#)



[Emerald Ash Borer](#)

[Attacks: ash trees](#)



European Cherry Fruit Fly

Attacks: Sweet and tart cherries, and other environmental host such as honeysuckle and dogwood



[European Grapevine Moth](#)

[Attacks: wine and table grapes](#)



[Flighted Spongy Moth Complex](#)

[Attacks: North American tree and shrub species](#)



[Giant African Snail](#)

[Attacks: plants, fruits and vegetables](#)



[Imported Fire Ants](#)

[Attacks: buds and fruits of crop plants](#)



[Mediterranean Fruit Fly](#)

[Attacks: fruits, vegetables and nuts](#)



[Mexican Fruit Fly](#)

[Attacks: fruits, particularly citrus and mango](#)



[Old World Bollworm](#)

[Attacks: more than 180 plant species](#)



[Oriental Fruit Fly](#)

[Attacks: fruits and vegetables](#)



[Spongy Moth](#)

[Attacks: trees and shrubs](#)



[Spotted Lanternfly](#)

[Attacks: fruit, ornamental and woody trees](#)



[Sudden Oak Death](#)

[Attacks: trees](#)



[See More](#) [See Less](#)

## Report a Pest

Have you recently encountered the listed pests or any invasive species?

If so, contact the State Plant Health Director below:

South Dakota State Plant Health Director

Amy Mesman

Email: [amy.mesman@usda.gov](mailto:amy.mesman@usda.gov)

Phone: [605-224-1713](tel:605-224-1713)

Fax: [605-494-0534](tel:605-494-0534)

Mailing Address:

314 South Henry St.

Suite 200

Pierre, SD 57501

**Office Manager:**

Dawn Harper: (701) 250-3360

Email: [Dawn.harper@usda.gov](mailto:Dawn.harper@usda.gov)

**Associate Executive Director:**

Vicki Wohlers: (970) 619-0652

[Print](#)