

Breadcrumb

1. [Home](#)
2. Print
3. Pdf
4. Node
5. Entity Print

Pest Information for Nevada

Last Modified:

Active Federal Quarantines

The following pests have Federal quarantines in certain areas of this State. Other Federal and State quarantines may apply. Learn about [State-level quarantines](#).

[Asian Longhorned Beetle](#)

[Attacks: hardwood trees, national forests](#)



[Citrus Greening and Asian Citrus Psyllid](#)

[Attacks: citrus trees](#)



[Imported Fire Ants](#)

[Attacks: buds and fruits of crop plants](#)



[Mediterranean Fruit Fly](#)

[Attacks: fruits, vegetables and nuts](#)



Mexican Fruit Fly

Attacks: fruits, particularly citrus and mango



[Oriental Fruit Fly](#)

[Attacks: fruits and vegetables](#)



Spongy Moth

Attacks: trees and shrubs



[Sudden Oak Death](#)

[Attacks: trees](#)



Watch Out For These Pests

This state has some crop, forest, or urban area(s) where the following pests or diseases could survive year-round.

[Asian Longhorned Beetle](#)

[Attacks: hardwood trees, national forests](#)



[Citrus Greening and Asian Citrus Psyllid](#)

[Attacks: citrus trees](#)



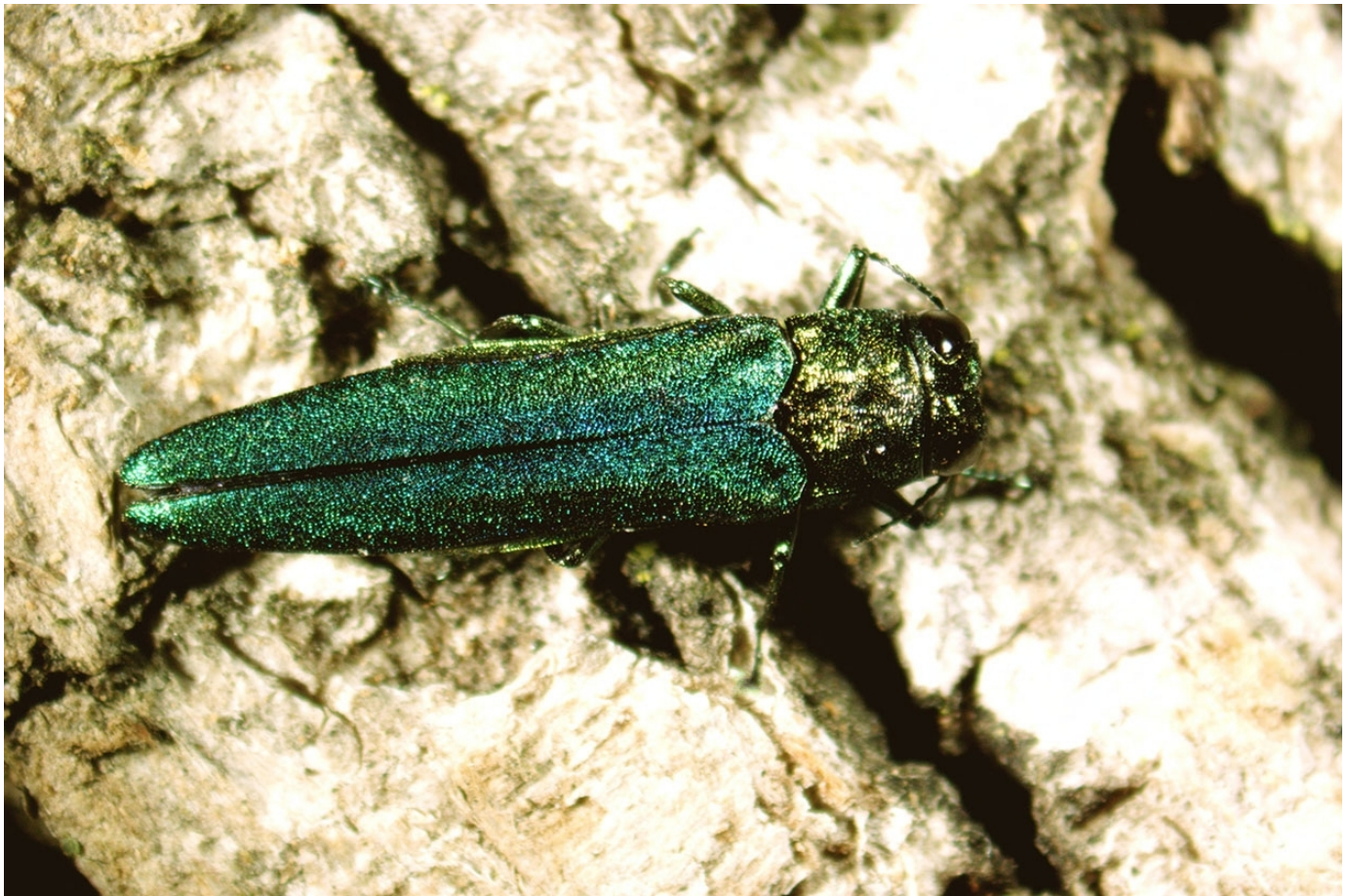
[Coconut Rhinoceros Beetle](#)

[Attacks: palm trees, including coconut, date, and oil palms](#)



[Emerald Ash Borer](#)

[Attacks: ash trees](#)



European Cherry Fruit Fly

Attacks: Sweet and tart cherries, and other environmental host such as honeysuckle and dogwood



[European Grapevine Moth](#)

[Attacks: wine and table grapes](#)



[Flighted Spongy Moth Complex](#)

[Attacks: North American tree and shrub species](#)



[Giant African Snail](#)

[Attacks: plants, fruits and vegetables](#)



[Imported Fire Ants](#)

[Attacks: buds and fruits of crop plants](#)



[Mediterranean Fruit Fly](#)

[Attacks: fruits, vegetables and nuts](#)



Mexican Fruit Fly

Attacks: fruits, particularly citrus and mango



[Old World Bollworm](#)

[Attacks: more than 180 plant species](#)



[Oriental Fruit Fly](#)

[Attacks: fruits and vegetables](#)



Spongy Moth

Attacks: trees and shrubs



[Spotted Lanternfly](#)

[Attacks: fruit, ornamental and woody trees](#)



[Sudden Oak Death](#)

[Attacks: trees](#)



[See More](#) [See Less](#)

Report a Pest

Have you recently encountered the listed pests or any invasive species?

If so, contact the State Plant Health Director below:

Nevada State Plant Health Director

Pete Rockermann

Email: peter.rockermann@usda.gov

Phone: [775-851-8818](tel:775-851-8818)

Fax: [775-851-8828](tel:775-851-8828)

Mailing Address:

8775 Technology Way

Reno, NV 89521

[Print](#)