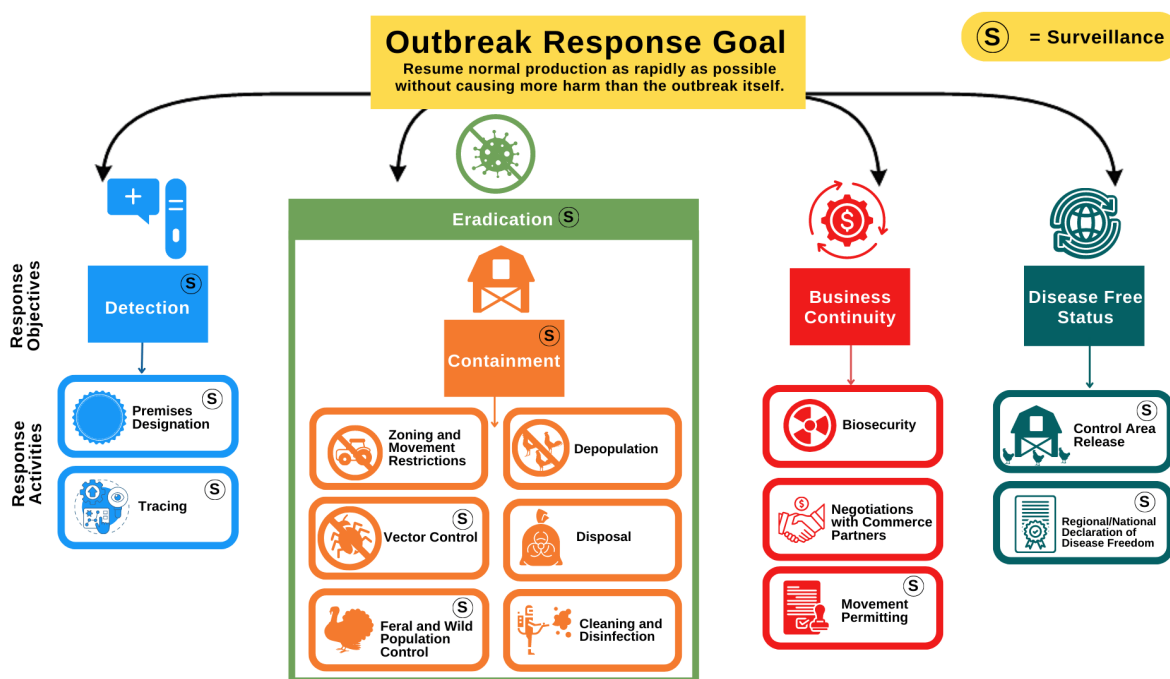


Breadcrumb

1. [Home](#)
2. Print
3. Pdf
4. Node
5. Entity Print

VS Outbreak Surveillance Toolbox

Last Modified:



The Outbreak Surveillance Toolbox is designed to provide veterinary epidemiologists with resources for designing surveillance schemes to support outbreak response.

The Role of Surveillance in Outbreak Response

The above diagram illustrates one way to picture an outbreak response. The overarching goal is attained through a set of concrete, measurable response

objectives. Numerous activities (common examples shown) take place during the outbreak response to achieve the objectives. Surveillance is an activity that occurs at different times during the outbreak response and supports different objectives or other response activities. Surveillance is appropriate any place and any time actionable information is needed.

What's in the Toolbox?

[Expand All](#)

Developing a Surveillance Scheme

A Step-by-step guide for designing a surveillance scheme to meet specific surveillance objective in a disease outbreak situation.

- [Elements for Surveillance Scheme Design](#)
- [Guidance on How to Design a Surveillance Scheme](#) (1.51 MB)

Sample Size Tables

Sample size tables to assist with determining the number of animals to sample from a premises or epidemiological unit and number of premises to sample from a zone or area:

- [Animal Sample Size Table](#) (139.48 KB)
 - [How to use the Animal Sample Size Table](#)
- [Premises Sample Size Table](#) (139.51 KB)
 - [How to use the Premises Sample Size Table](#)
- [More Information about the Animal and Premises Sample Size Tables](#)

Case Definitions

The NLRAD (National List of Reportable Animal Diseases) website maintains a library of approved case definitions and guidelines for developing new case definitions.

- [Case Definitions](#)

Resources

- [Useful Links for Surveillance Scheme Design](#)
- [Glossary](#)

Contact Us

Surveillance, Design, and Analysis

Center for Epidemiology and Animal Health

Email: VS.CEAH.Surveillance@usda.gov

[Print](#)