

Breadcrumb

1. [Home](#)
2. Print
3. Pdf
4. Node
5. Entity Print

Swine: Pseudorabies and Swine Brucellosis Surveillance State Animal Health Official Reporting Dashboard

Last Modified:

USDA's Animal and Plant Health Inspection Service (APHIS) surveys for pseudorabies (PRV) and swine brucellosis (SB). The PRV and SB dashboard provides State animal health officials with both national- and State-level views of APHIS' surveillance data. APHIS uses this data to rapidly detect PRV and SB in U.S. swine should an introduction occur, monitor feral swine for disease introduction, and demonstrate disease freedom.

[View Dashboard \(Existing Users Only\)](#)

[Request Access \(State Animal Health Officials Only\)](#)

Overview

Users navigate the dashboard by clicking on the tabs at the top of the main page. The dashboard includes five tabs: a testing summary tab, a PRV testing history tab, a sampling by age class tab, a cull-sows boars sampling effort by State tab, and an objectives & populations tab for reference. The testing summary tab provides the

number of accessions and tests completed for each surveillance component for the fiscal year selected, with PRV testing data summarized in the top table and SB data in the bottom table.

Testing Summary PRV Testing History Sampling by age class Cull Sow-Boar Sampling Effort ... Objectives & Populations

PRV/SB Testing Summary Overview

Year of Date For Reporting

Display level

[Click here for a complete description of sampled populations.](#)

2020

National

PRV Testing

Hover over a number to see the description of the surveillance component population tested. Due to discontinuation of federal funding for Diagnostic Laboratory Submissions testing in FY2017 and subsequent discontinuation of testing by 2018, data are no longer being reported for FY 2019 and later.

	Q1		Q2		Q3		Q4		Totals	
	PRV Accessions	PRV Tested	PRV Accessions	PRV Tested	PRV Accessions	PRV Tested	PRV Accessions	PRV Tested	PRV Accessions	PRV Tested
Cull sow-boars at slaughter		20,505		19,901		10,126				50,532
Feral swine		1,451		1,194		494				3,139
Diagnostic laboratory serology submissions	363	6,052	793	6,319	825	11,700	804	14,877	2,784	38,948
Surveillance Based Alternative Sampling		1,694		1,750		1,485				4,929
Grand Total	876	29,702	1,273	29,164	1,023	23,805	804	14,877	3,975	97,548

SB Testing

Hover over a number to see the description of the surveillance component population tested.

	Q1	Q2	Q3	Q4	Totals
	SB Tested	SB Tested	SB Tested	SB Tested	SB Tested
Cull sow-boars at slaughter	20,505	19,901	10,126		50,532
Feral swine	1,469	1,199	495		3,163
Surveillance Based Alternative Sampling	1,694	1,750	1,485		4,929
Grand Total	23,668	22,850	12,106		58,624



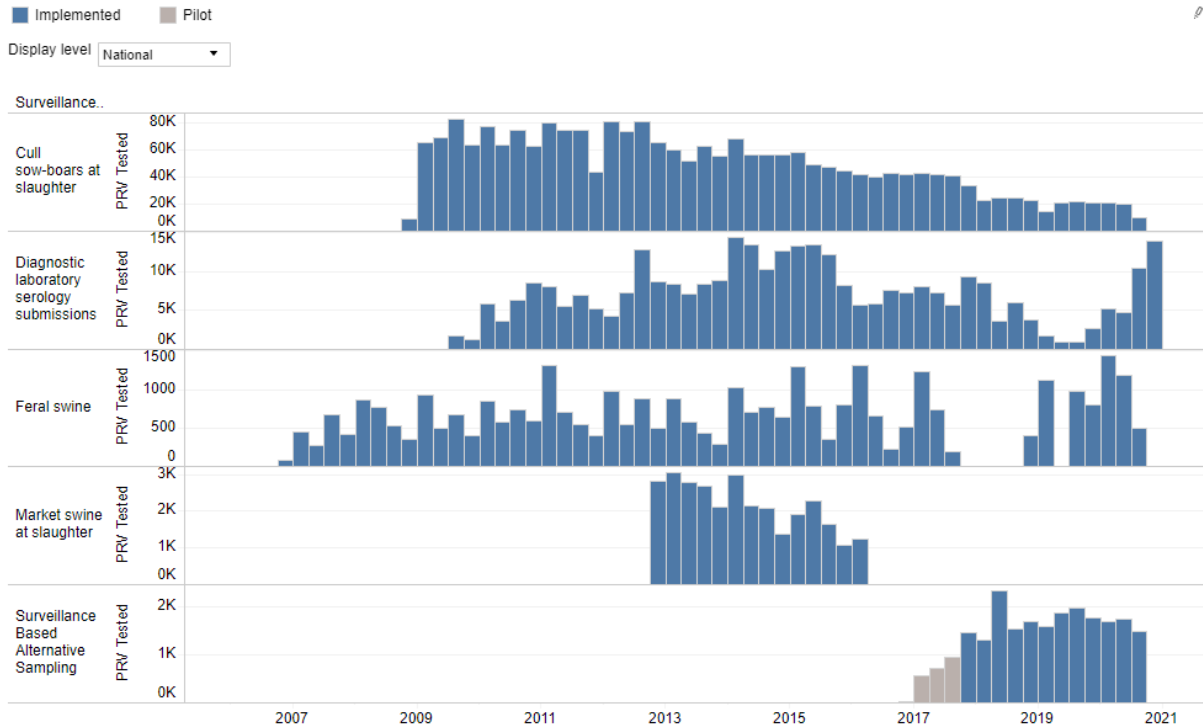
These data, and all the information contained therein, have been collected by the U.S. Department of Agriculture's Animal and Plant Health Inspection Service (APHIS), or by its cooperators on APHIS' behalf, for restricted government purposes only. This information is the sole property of APHIS. See full disclaimer here: aphis.usda.gov/help/map-disclaimer.

The other tabs provide more detailed information, and each tab allows users to filter information by fiscal quarter and year as well as by display level (national or State).

PRV Testing History Tab

This tab provides the number of tests completed for PRV for each surveillance component.

PRV Testing History



Sampling by Age Class Tab

This tab provides the total number of PRV or SB tests completed for each age class across the different components.

PRV Sampling Age Classes

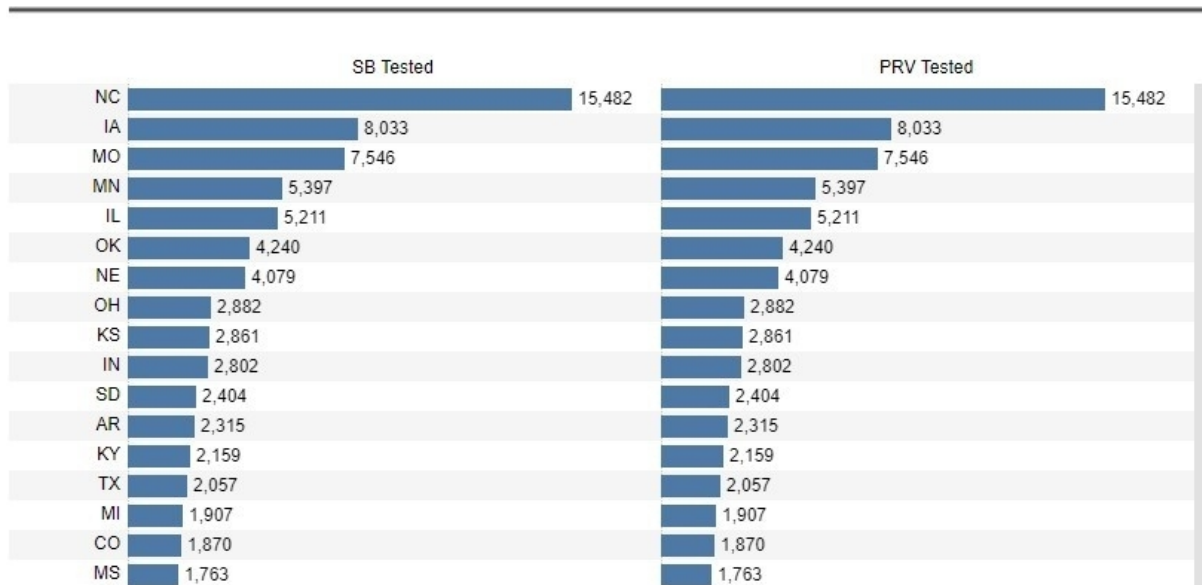
		Nursery	Suckling	Grower/Finisher	Sow/Boar	Not provided
Diagnostic laboratory serology submissions	Diagnostic sick pig submission					
	Feral Swine Submissions					
	Premises with known or suspect feral swine exposure					
	Routine serology / herd profiling					33,623
	Swine with a higher probability of feral swine exposure					
	Not Reported					276
	Epidemiologic Traceback Investigation & Traceback					5
	FAD Diagnostics					5
	Interstate Movement					592
Cull sow-boars at slaughter	Routine serology / herd profiling				50,532	
Market swine at slaughter	Routine serology / herd profiling					
Surveillance Based Alternati..	Routine serology / herd profiling				4,929	
Grand Total					55,461	34,501

Cull Sows-Boar Sampling Effort by State Tab

This tab provides the total number of PRV or SB tests completed on cull sow-boars for the indicated fiscal year, with the count divided by State and in descending

order.

Cull sows-boars tested by state



Users can hover over the graphics on the dashboard for additional information.

Quick Tip: Users can find a description of each swine population on the Objectives & Populations tab.

Need Help?

If you have trouble accessing the dashboard or viewing the data it contains, contact vs.data.services@usda.gov.

Please direct questions about dashboard content to the animal health point of contact listed in the dashboard.

[Print](#)