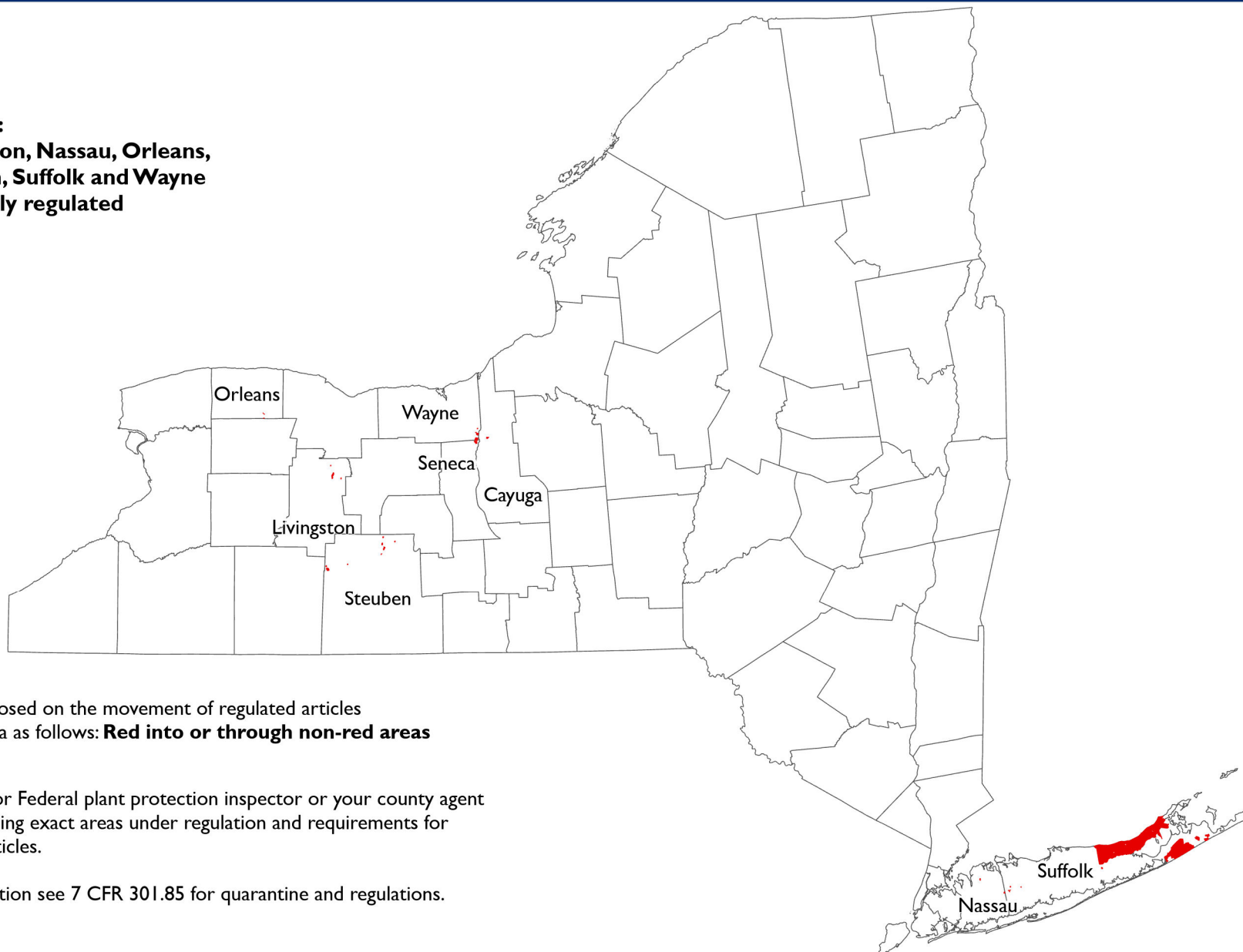


Golden Nematode (*Globodera rostochiensis*) Program

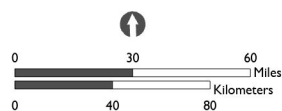
Regulated areas:
Cayuga, Livingston, Nassau, Orleans,
Seneca, Steuben, Suffolk and Wayne
Counties partially regulated



Restrictions are imposed on the movement of regulated articles
 from a regulated area as follows: **Red into or through non-red areas**

Consult your State or Federal plant protection inspector or your county agent
 for assistance regarding exact areas under regulation and requirements for
 moving regulated articles.

For detailed information see 7 CFR 301.85 for quarantine and regulations.



Data Source:
 USDA APHIS PPQ
 NYSAGM

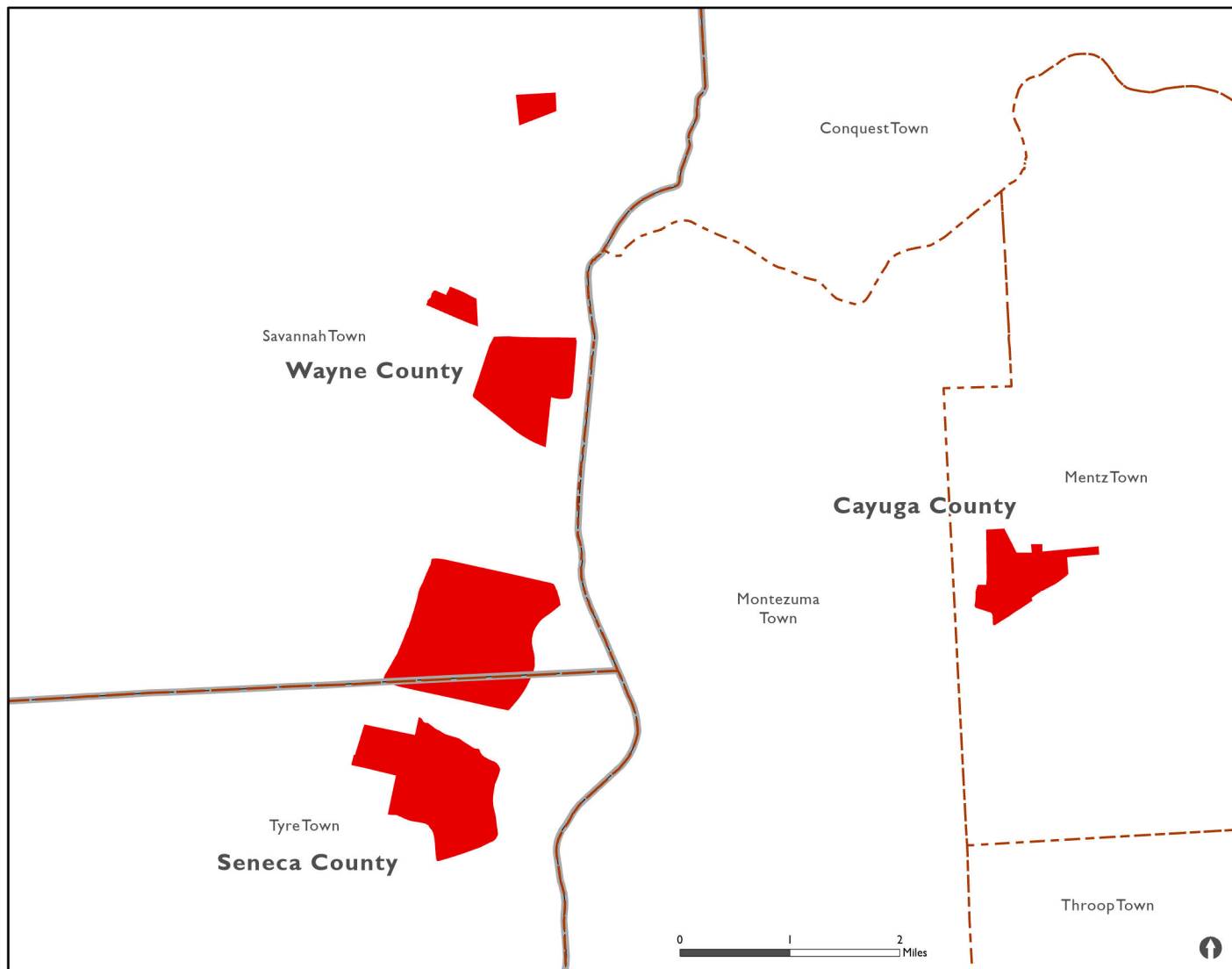
Date Created:
 3/6/2025

USDA APHIS
 2150 Centre Ave
 Fort Collins, Co 80526

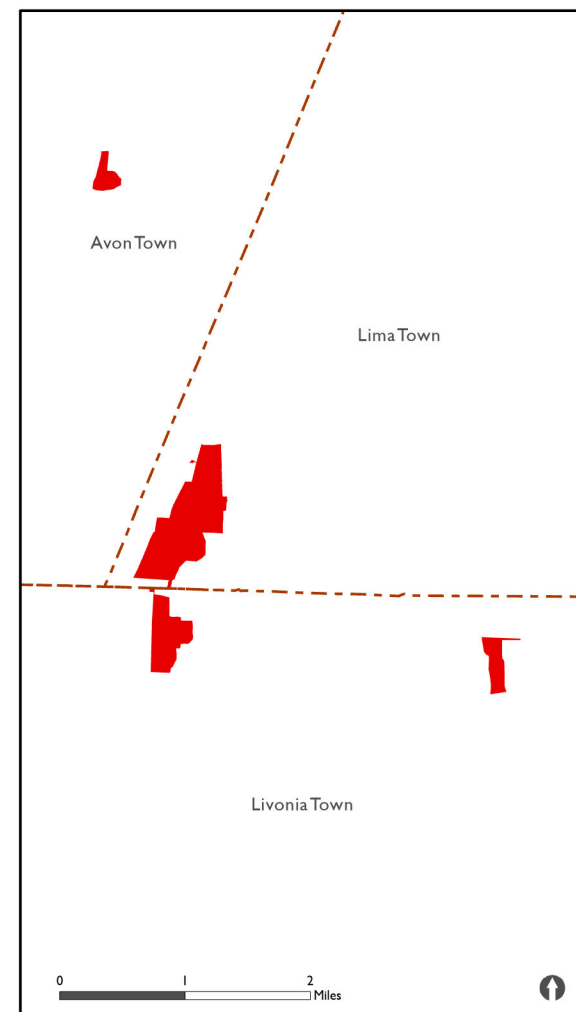
These data, and all the information contained herein, have been collected by the U.S. Department of Agriculture's Marketing and Regulatory Programs Business Services' (MRPBS) Animal and Plant Health Inspection Service (APHIS) and/or Agriculture Marketing Service (AMS), or by its cooperators on APHIS' and/or AMS' behalf, for restricted government purposes only. This information is the sole property of MRPBS. See full disclaimer at: <https://www.aphis.usda.gov/aphis/banner/help/disclaimers/>



Cayuga, Seneca and Wayne Counties



Livingston County



Restrictions are imposed on the movement of regulated articles from a regulated area as follows: **Red into or through non-red areas**

- State and Federal GN Regulated Areas
- Town Boundaries
- County Boundaries

Consult your State or Federal plant protection inspector or your county agent for assistance regarding exact areas under regulation and requirements for moving regulated articles.

For detailed information see 7 CFR 301.85 for quarantine and regulations.

Data Source:
USDA APHIS PPQ
NYSAGM

Date Created:
3/6/2025

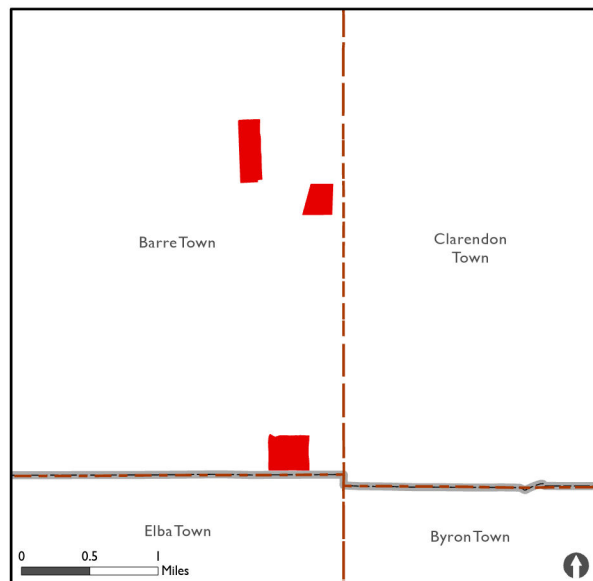
USDA APHIS
2150 Centre Ave
Fort Collins, Co 80526

These data, and all the information contained herein, have been collected by the U.S. Department of Agriculture's Marketing and Regulatory Programs Business Services' (MRPBS) Animal and Plant Health Inspection Service (APHIS) and/or Agriculture Marketing Service (AMS), or by its cooperators on APHIS' and/or AMS' behalf, for restricted government purposes only. This information is the sole property of MRPBS. See full disclaimer at: <https://www.aphis.usda.gov/aphis/banner/help/disclaimers/>

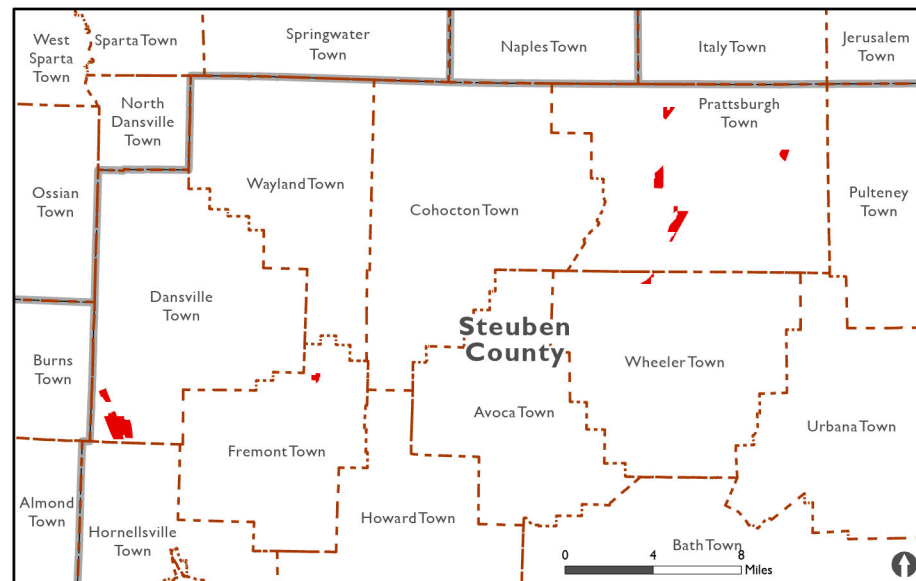


Golden Nematode (*Globodera rostochiensis*) Program

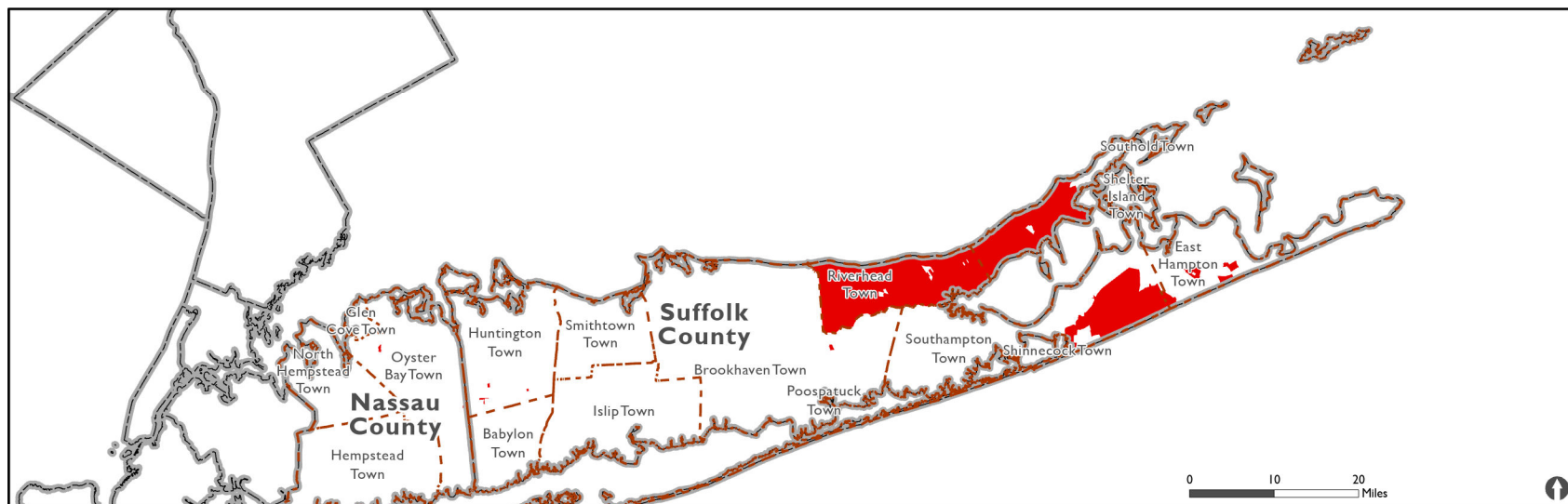
Orleans County



Steuben County



Nassau and Suffolk Counties



Restrictions are imposed on the movement of regulated articles from a regulated area as follows: **Red into or through non-red areas**

Town Boundaries
 County Boundaries

State and Federal GN Regulated Areas

Consult your State or Federal plant protection inspector or your county agent for assistance regarding exact areas under regulation and requirements for moving regulated articles.

For detailed information see 7 CFR 301.85 for quarantine and regulations.

Data Source:
USDA APHIS PPQ
NYSAGM

Date Created:
3/10/2025

USDA APHIS
2150 Centre Ave
Fort Collins, Co 80526

These data, and all the information contained herein, have been collected by the U.S. Department of Agriculture's Marketing and Regulatory Programs Business Services' (MRPBS) Animal and Plant Health Inspection Service (APHIS) and/or Agriculture Marketing Service (AMS), or by its cooperators on APHIS' and/or AMS' behalf, for restricted government purposes only. This information is the sole property of MRPBS. See full disclaimer at: <https://www.aphis.usda.gov/aphis/banner/help/disclaimers/>