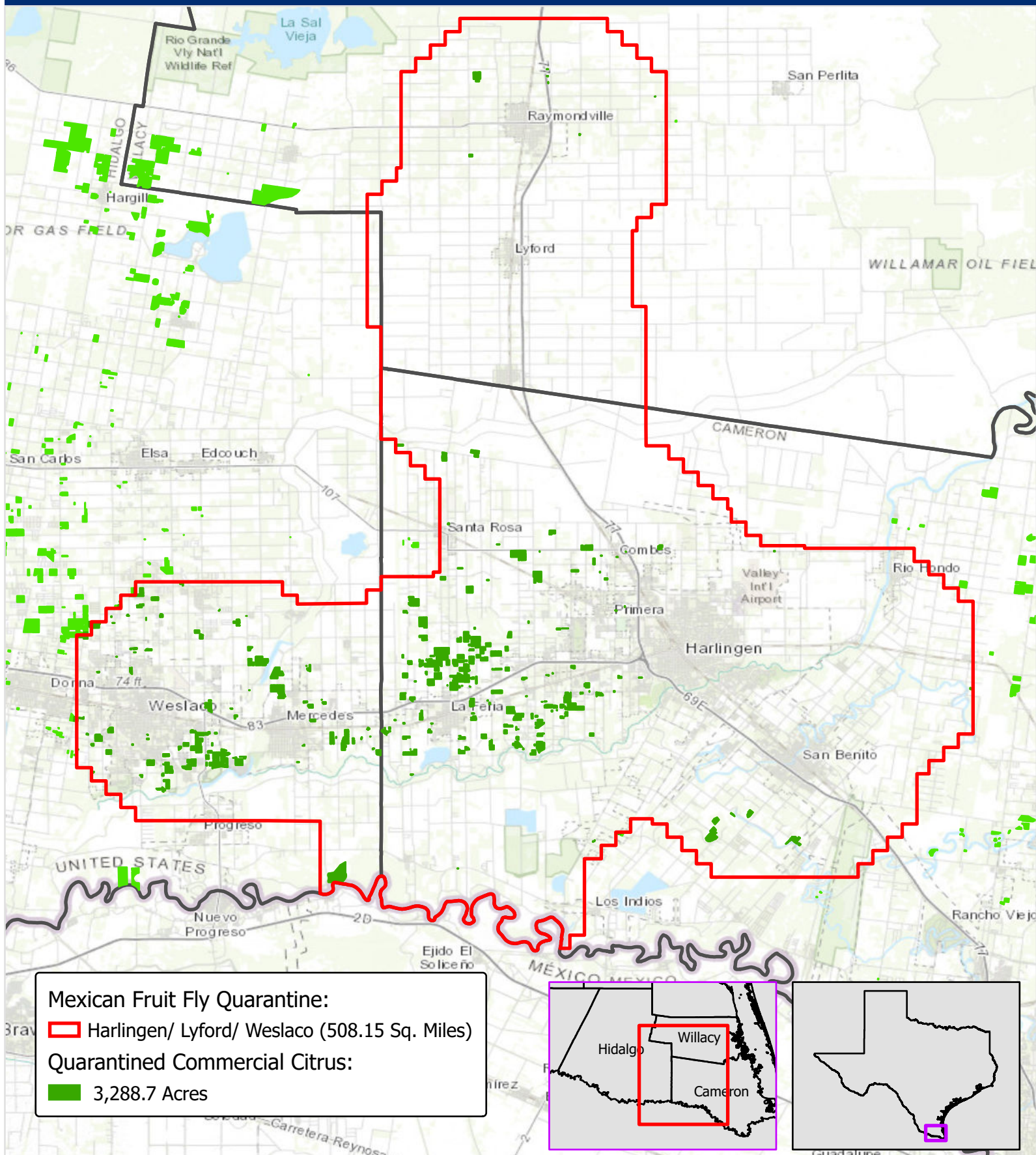
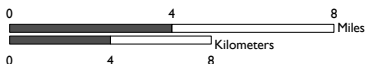




Harlingen/ Lyford/ Weslaco Quarantine, Tri-County Area, TX



Mexican Fruit Fly Quarantine:
 Harlingen/ Lyford/ Weslaco (508.15 Sq. Miles)
Quarantined Commercial Citrus:
 3,288.7 Acres



1:300,000



Date Created:
6/29/2022

USDA APHIS PPQ
903 San Jacinto Blvd
Suite 270
Austin, TX 78701

These data, and all the information contained therein, have been collected by the U.S. Department of Agriculture's Animal and Plant Health Inspection Service (APHIS), or by its cooperators on APHIS' behalf, for restricted government purposes only and is the sole property of APHIS. See full disclaimer: <https://www.aphis.usda.gov/help/data-disclaimer>