

Lobesia botrana (Denis & Schiffermüller)
(Lepidoptera Tortricidae)



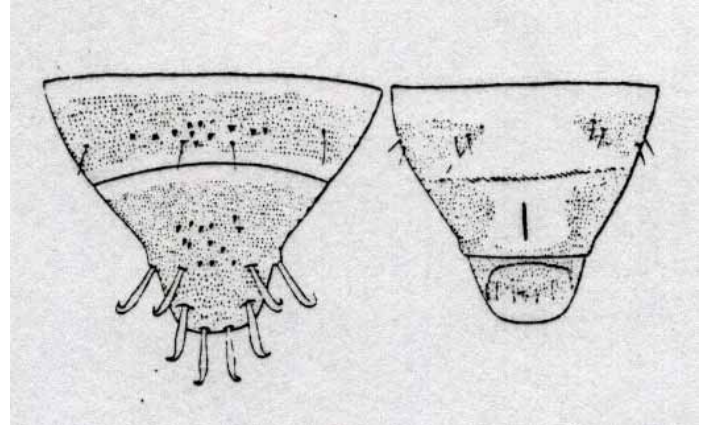
Photo: Andrea Lucchi

Overwintering and First Generation

by Andrea Lucchi, Bruno Bagnoli, Claudio Ioriatti



Lb: overwintering pupa within the silky cocoon (left); the same cut open, on the right. Photos: Bruno Bagnoli.



On the left, Lb pupae (female above, male below). On the right, Lb pupa cremaster (from Silvestri, 1912). Photos: Bruno Bagnoli.

Pheromone traps for Lobesia botrana male monitoring



Photos: Andrea Lucchi

Lobesia botrana 1st generation

Eggs on the inflorescences (arrows)



Lb: egg on a vine inflorescence bract near an exudate drop



Lb: egg on a vine inflorescence bract



Lb: egg on the calyptra of a vine flower bud



Lb: egg on the top of a vine flower calyptra

Photos: Bruno Bagnoli

Lobesia botrana 1st generation



Lb 1st instar larva



Lb 2nd instar larva within a flower bud



Lb 4th instar larva on a vine inflorescence

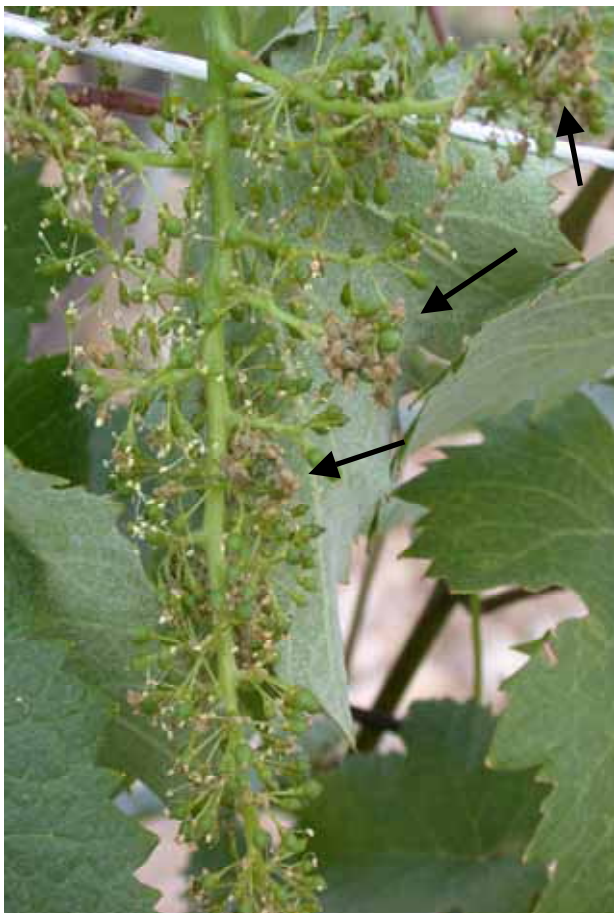


Lb 5th instar larva on a vine inflorescence

Photos: Bruno Bagnoli

Lobesia botrana 1st generation

Larval nests on the inflorescence (arrows)



Photos: Andrea Lucchi

Lobesia botrana 1st generation

Larval nests on the inflorescence (arrows)



Schematic drawing of Lb phenology
(from Stockel, 1992)

