

Asian Longhorned Beetle Hunt Worksheet



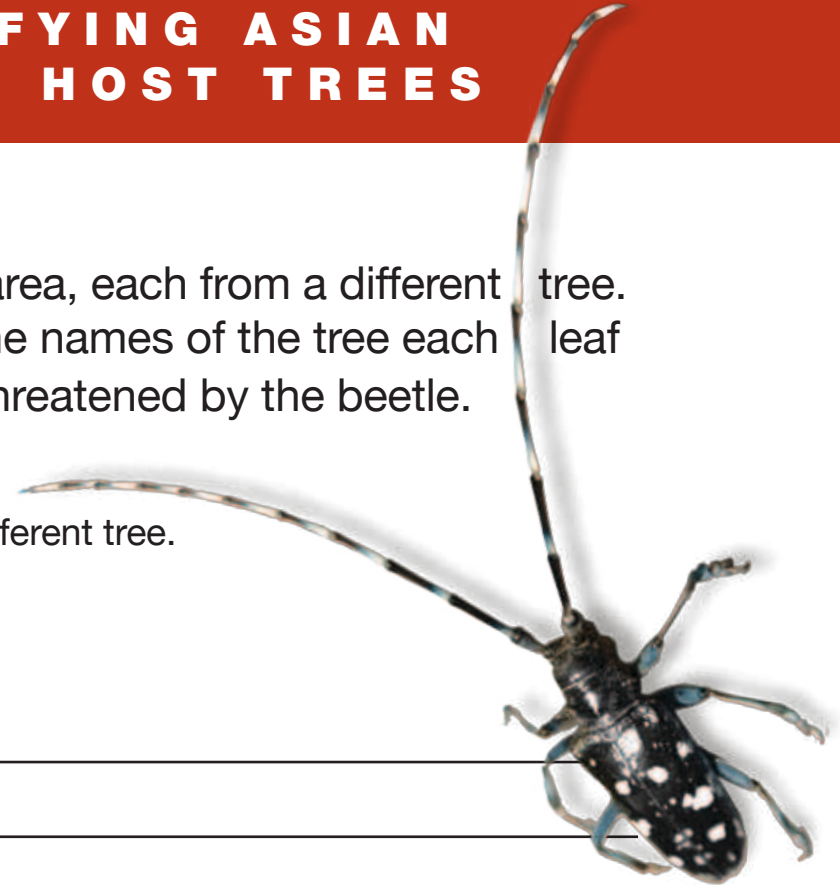
WORKSHEET: IDENTIFYING ASIAN LONGHORNED BEETLE HOST TREES

Instructions: Collect 3 to 5 leaves from your area, each from a different tree. Then, use the leaves to learn and write down the names of the tree each leaf came from, and whether or not they could be threatened by the beetle.

1 Collect 3 to 5 leaves from your area, each from a different tree.

2 Are any an Asian longhorned beetle host tree?

3 Do the trees show signs of the Asian longhorned beetle?



Asian Longhorned Beetle Hunt Worksheet Guide



PART 2: IDENTIFYING ASIAN LONGHORNED BEETLE HOST TREES

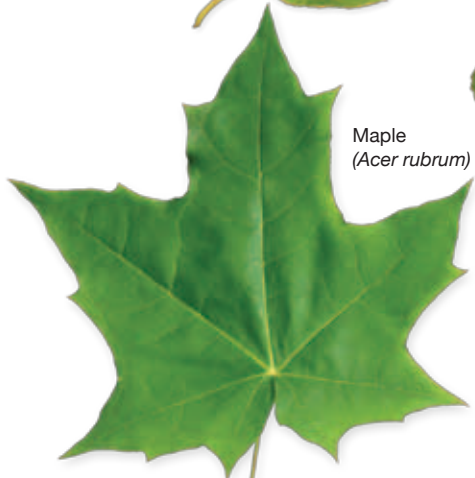


The Asian longhorned beetle can attack many deciduous, leafy trees. Use this sheet to learn which of these trees live in your area.

Hackberry
(*Celtis occidentalis*)



Maple
(*Acer rubrum*)



Poplar
(*Populus deltoides*
x Populus nigra)



Katsura
(*Cercidiphyllum japonicum*)

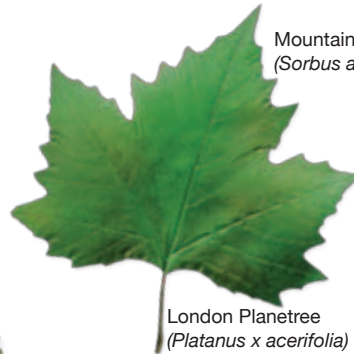


Horsechestnut
(*Aesculus hippocastanum*)



Ash
(*Fraxinus pennsylvanica*)

Willow
(*Salix babylonica*)



London Planetree
(*Platanus x acerifolia*)

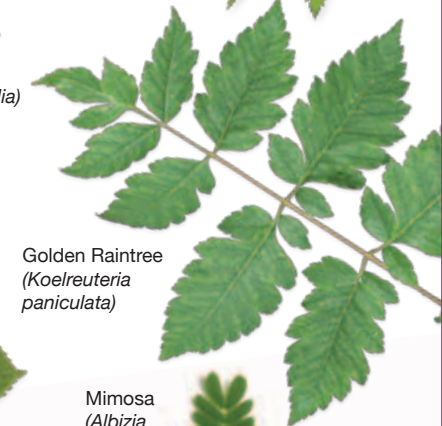


Elm
(*Ulmus parvifolia*)



Birch
(*Betula papyrifera*)

Mountain Ash
(*Sorbus americana*)



Golden Raintree
(*Koelreuteria paniculata*)



Mimosa
(*Albizia julibrissin*)