

Breadcrumb

1. [Home](#)
2. Print
3. Pdf
4. Node
5. Entity Print

## South American Cactus Moth

Last Modified:



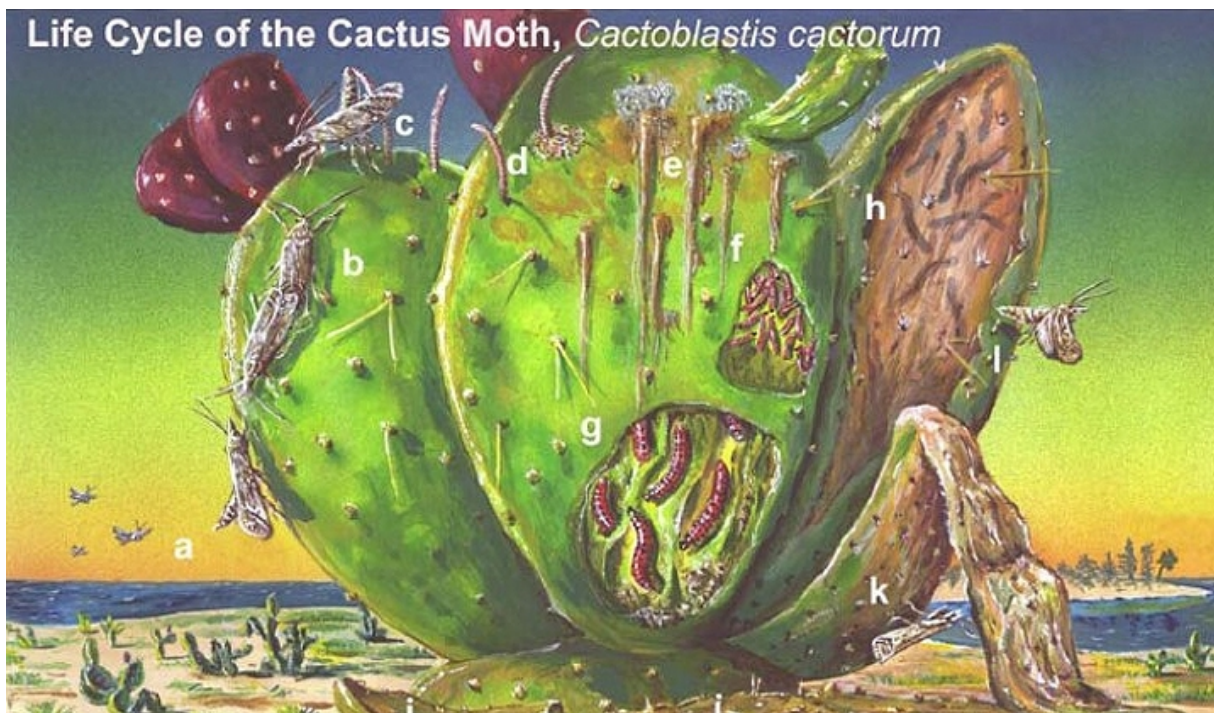
The South American cactus moth is a pest of *Opuntia* species (also known as prickly pear cactus), and an occasional pest of *Nopalea*, *Cylindropuntia*, and *Consolea cactus* species. They develop from eggs to larvae to moths. The larvae feed as a colony, tunneling through and hollowing out cactus pads, which eventually kills the plant.

The moth—native to Argentina, Uruguay, Paraguay, and Brazil—found its way to Florida in 1989, most likely by natural spread through “island hopping” from the Caribbean or U.S. interceptions of *Cactoblastis* moths in nursery stock from the Caribbean as early as 1981. Prickly pear cacti are used and valued in landscapes for plant diversity, to reduce wind and erosion, and as a habitat for nesting animals.

## What To Look For

Within a short period of time, this moth can destroy whole stands of cacti. Here's what to look for:

- Appearance
  - Growing larvae are greenish-gray in color and 0.25 centimeters long. As they continue to get bigger, larvae develop a rich salmon orange to red color with blackish spots that form bands. Adult moths are a grayish-brown color with a wingspan of 0.86 to 1.4 inches.
- Eggs
  - After an incubation period, the female deposits an egg stick, which resembles a cactus spine, consisting of an average of 70 to 90 eggs on a pad of the prickly pear. Eggs develop and hatch into larvae.
- Plant Tissue
  - Affected plant tissue will yellow and ooze fluids. They'll also have insect droppings.



The above illustration shows the life cycle of the South American cactus moth: (a) female moth releasing sex pheromone; (b) mating; (c) female depositing an egg stick; (d) hatching; (e) external damage; (f) shown here in cross-section, larval feeding; (g) internal development of larvae; (h) hollowing out the cactus pad; (i) mature larvae; (j) pupae; and (k) adult moths.

## How To Prevent This Pest

People can stop the South American cactus moth from spreading by not moving infested cacti or cacti you suspect might be infested. The following states are quarantined for the pest: Alabama, Florida, Georgia, Louisiana, Mississippi, and South Carolina. Remove and destroy any infested cacti in these areas.

## How It Is Treated

If your cactus shows signs of infestation, remove and destroy the infested pads or the entire cactus. Properly dispose of the cactus by either burning or chopping it into small pieces.

## Report Plant Pests and Diseases

Have you seen this pest or signs of pest damage? Immediately report your findings.

[Find your State plant regulatory official](#)

[Find your State plant health director](#)

## Controlling the South American Cactus Moth

### Regulatory Information

- [Federal Regulations](#)
- [Regulated Areas](#) (145.08 KB)
- [Regulated Articles](#) (157.3 KB)

## Contact Us

Ron Weeks, Jr.

Agriculturalist

Email: [ron.d.weeks@usda.gov](mailto:ron.d.weeks@usda.gov)

Phone: [919- 559-4311](tel:919-559-4311)

[Print](#)