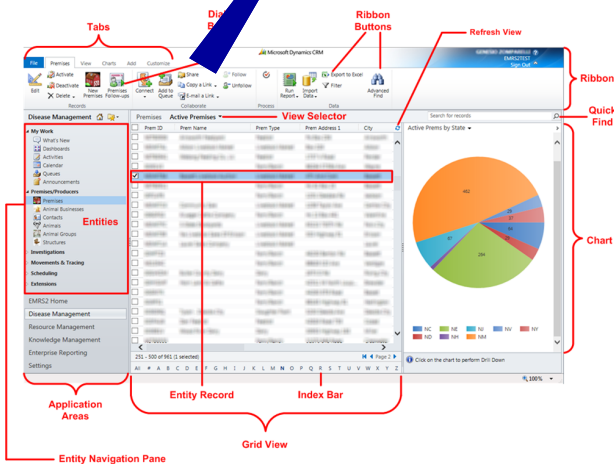
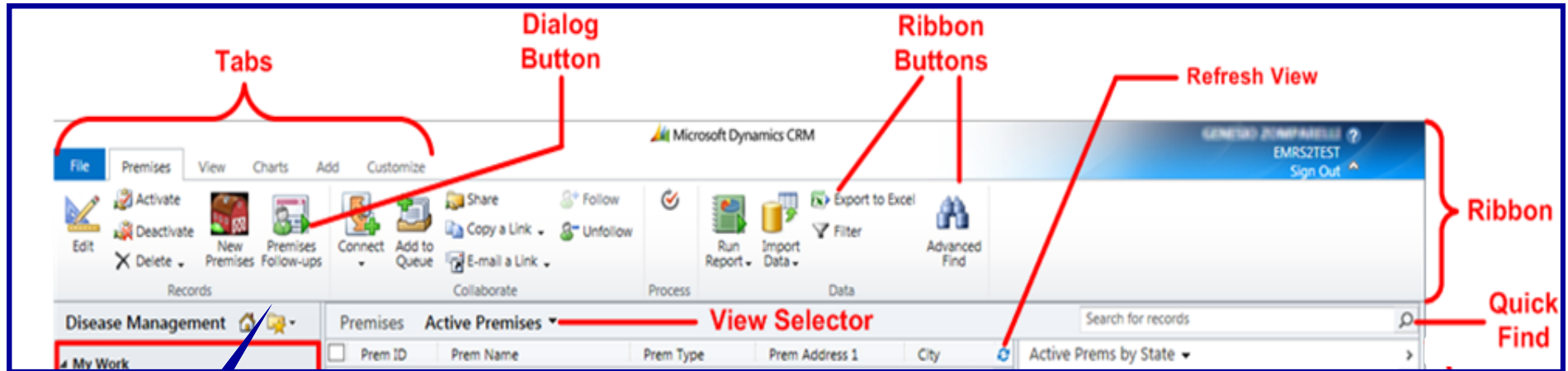


The EMRS2 Interface: Key Navigation Concepts (Part 1)



Ribbon

The ribbon includes tabs and dialog buttons that let you quickly access different actions. Just like in Microsoft Office, this ribbon allows you to navigate through the activities you need to complete your task.

Tabs

The tabs, located on the ribbon, are similar to those you see in other Microsoft products. Use these tabs to navigate as you need to do something in the system. In EMRS2, these tabs will change (automatically) depending on what you are doing. This ensures that the activities you need to complete or view are always within easy reach.

Buttons

Also on the ribbon, the ribbon buttons and dialog buttons allow you to 'do' something. You may need to create a new premises (a dialogue button) or run a report (a ribbon button). Dialog buttons will prompt a new dialog, which you can easily follow to complete the task. These dialog buttons and ribbon buttons are action-oriented and customized in EMRS2 to be intuitive and easy to use.

Refresh View

Just like Windows Explorer, EMRS2 sometimes needs to be refreshed. Refreshing will ensure that the most current and complete information is available for view, editing, and analysis.

View Selector

You can use the view selector to see different views of the same data. Here you will find any views you created and saved, filtered and including just the data you want.

Quick Find

Using quick find, you can type in text to quickly search to locate specific records. You can type in part of a premises name, or city of a premises, and records matching that criteria will appear.

The EMRS2 Interface: Key Navigation Concepts (Part 2)

The screenshot shows the EMRS2 interface with several key components labeled:

- Tabs:** Located at the top of the ribbon.
- Dialog Button:** A button on the ribbon that opens a dialog box.
- Ribbon Buttons:** Various icons and buttons on the ribbon.
- Refresh View:** A button to refresh the data in the grid.
- My Work:** A central navigation pane with categories like Dashboards, Calendar, and Announcements.
- Entities:** A sub-section within the navigation pane.
- Application Areas:** A group of application-specific links at the bottom of the navigation pane.
- Entity Record:** A single record highlighted in the grid view.
- Index Bar:** An alphabetical filter bar at the bottom of the grid.
- Grid View:** The main table of records with columns for Prem ID, Prem Name, Prem Type, Prem Address 1, and City.
- Chart:** A pie chart on the right titled 'Active Prems by State' showing data for various states (NC, NE, NJ, NV, NY, ND, NH, NM).
- Entity Navigation Pane:** A vertical pane on the left side of the grid.

Chart

In EMRS2, records in the currently selected view are displayed in a chart at the right. You can easily click on the chart to drill down to further details. Additionally, charts are dynamic (updated automatically with the most current records) and can be exported for presentations.

Application Areas

Each application area is a logical grouping of records that correspond to the key objectives of EMRS2: disease management, resource management, knowledge management, and enterprise reporting. Access to these areas is restricted based on your role in EMRS2, and the privileges associated with your role.

Index Bar

The grid view, visible above, that displays all the records for a selected entity (for example, a premises, animal, or business), also has an index bar. The index bar allows you to quickly filter records in the grid alphabetically.

Entities, Entity Navigation Pane, and Grid View

An entity is a single person, place, or thing about which you can store data. Entities may have relationships with other entities; these are built into EMRS2. In EMRS2, entities represent the tables in a database which show records. In other words, information about a premises, animal, or business (a record) is stored in an entity and visible in the grid view.

The EMRS2 Interface: Record Form

Record Form

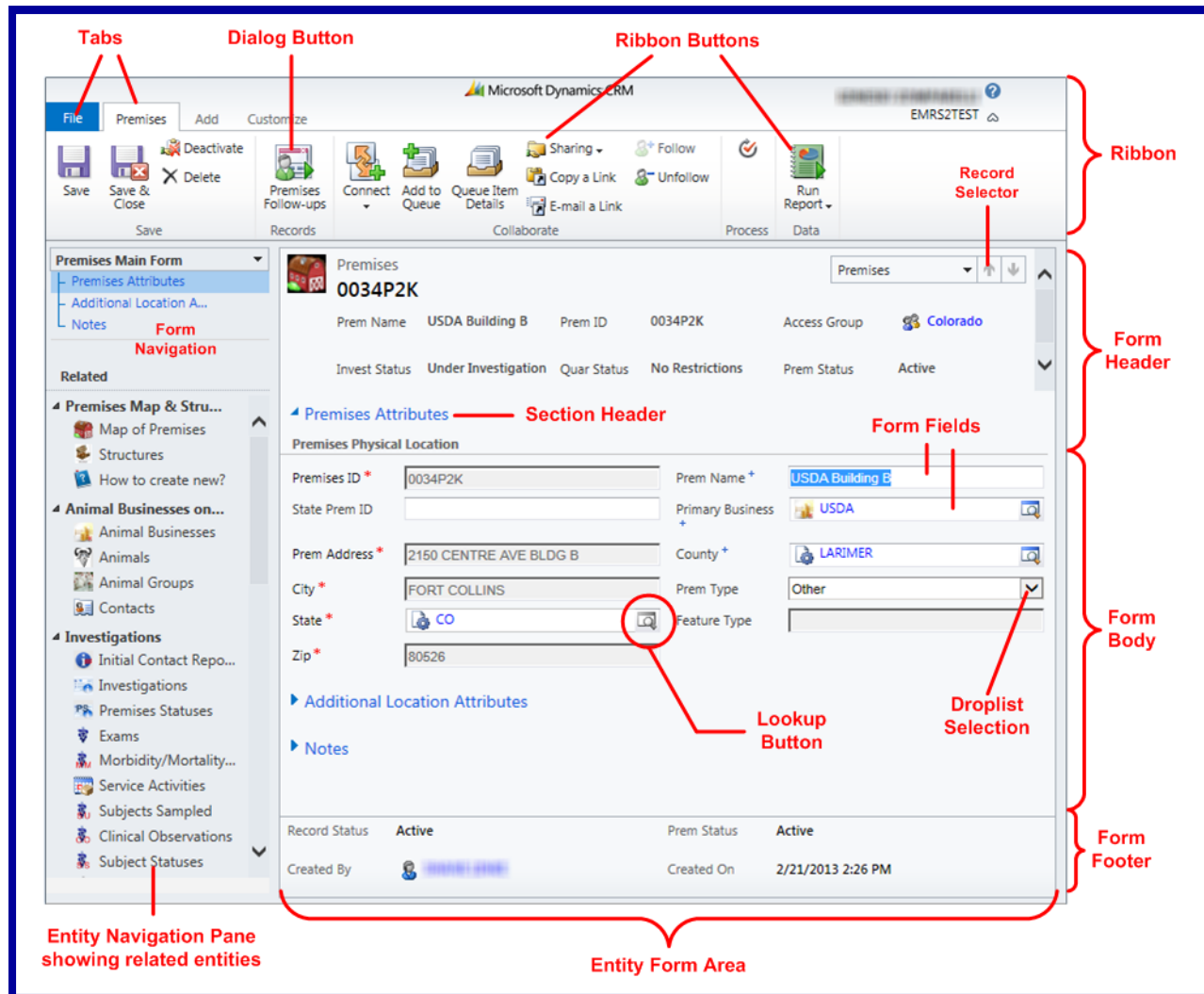
When you open a record in EMRS2, you'll see a record form. The record form will still have the familiar ribbon, dialogue buttons, and ribbon buttons. On the record form, the entity navigation pane displays different types of records. These records can be easily navigated.

Entity Navigation

The entity navigation pane displays records that are linked to the open record. For example, if you click animal businesses when you are in a premises record (as shown here), you will then see only those animal businesses that are linked to the open premises, such as parent premises.

Form Navigation

Form navigation tells you where you are in the record. For example, in this illustration, you are in premises attributes (rather than in the notes section). This is also reflected in the section header, in the body of the record.



Entity Navigation Pane showing related entities

Entity Form Area

Body & Fields

Fields are located in the body of the record form. In EMRS2, you will use dialogs to complete most of the fields on a form. The fields on a form, such as premises name, premises address, or premises type are often referred to as attributes.

Header & Footer

The header includes data about the record, and will always remain visible when the record is open. Similarly, the footer remains visible whenever you have the record open, displaying the status of the entity (such as a premises), as well as who created the record and when it was created.

Record Selector

The record selector lets you quickly jump to other records from the original view (for example, a list of premises in a specific town). You can use the record locator to easily flip through these premises.

Lookup Button

In many records in EMRS2 there are lookup buttons. These buttons aid you in inputting the correct information, by providing options (such as a list of States, in this case) and saving you time entering data.

The EMRS2 Interface: Dialogs and Advanced Find

Add Follow-ups
Premises Follow-ups: What do you want to do?

What do you want to do for this premises? [0034P2K](#)

USDA Building B
2150 CENTRE AVE BLDG B
FORT COLLINS, CO, 80526
FGLat: 40.55727 FGLon: -105.08796

Record Status:(Active)
Invest Status:(Under Investigation) Quar Status:(No Restrictions)

Create Animal Business

Create a Structure (Barn, Pen, etc).

Create an Investigation.

Soft Delete or Deactivate this premises.

Tip

Prem ID:[0034P2K](#)
Name: (USDA Building B)
State ID:
Business:[USDA](#)

EMRS Premises records:

- 1) Traditional- allocator.
- 2) GNIS- Geographic Names Information Service.
- 3) Require 1 business, may have >1. (inactive if gone)
- 4) May have structures.
- 5) Create once & relate to 1 or >1 investigations.
- 6) State level access.

Dialogs

EMRS2 relies on dialogs. Dialogs allow users to quickly enter data in a single place, without having to manage the relationships between the data they enter. In EMRS2, dialogs are pop-up screens that lead the user through steps, such as making a selection or inputting data related to a specific entity (such as a premises, as seen at left). They are similar to wizards in other Microsoft programs. All the user has to do is follow the prompts on the dialogs, and EMRS2 does the rest by maintaining the relationships between the various entities (like an animal, premises, or business).

Microsoft Dynamics CRM

Advanced Find

Look for: [Animal Businesses](#) Use Saved View: [\[new\]](#)

Select

Investigations (Animal Business)

Invest Status Equals [Under Investigation](#)

Species Group Equals [Bovine](#) [Bison](#)

Advanced Find Query

The query builder in the Advanced Find (at left) allows users to create complex queries. For example, a user can query all animal businesses, in a specific state, with statutes of “under investigation”. These queries are created by using operators, such as “equals” and “contains data”. This advanced function in EMRS2 provides a powerful query capability for users, based on their user role.