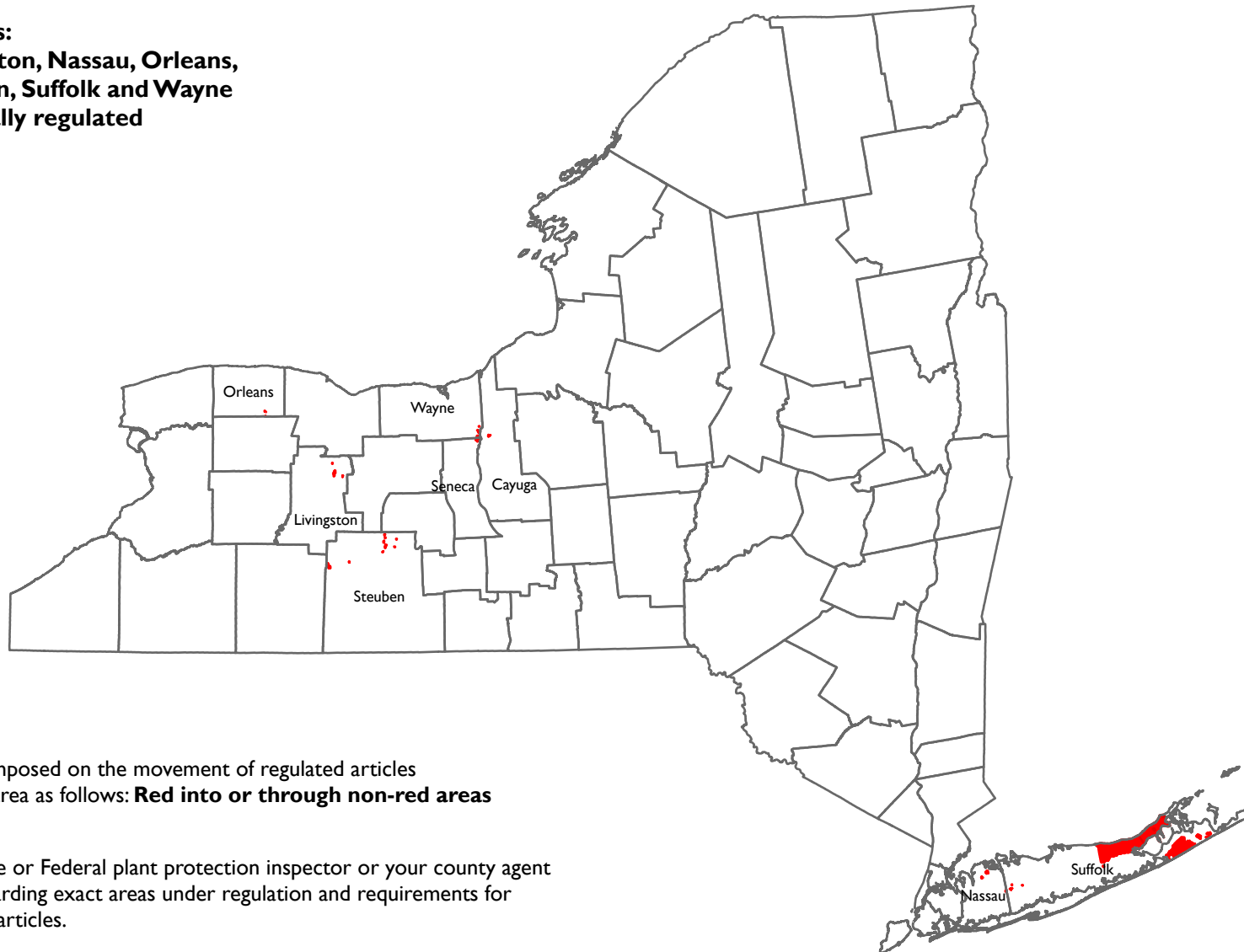



**Regulated areas:**  
**Cayuga, Livingston, Nassau, Orleans,**  
**Seneca, Steuben, Suffolk and Wayne**  
**Counties partially regulated**

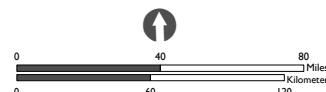


Restrictions are imposed on the movement of regulated articles from a regulated area as follows: **Red into or through non-red areas**

Consult your State or Federal plant protection inspector or your county agent for assistance regarding exact areas under regulation and requirements for moving regulated articles.

For detailed information see 7 CFR 301.85 for quarantine and regulations.

 State and Federal Regulated GN Areas



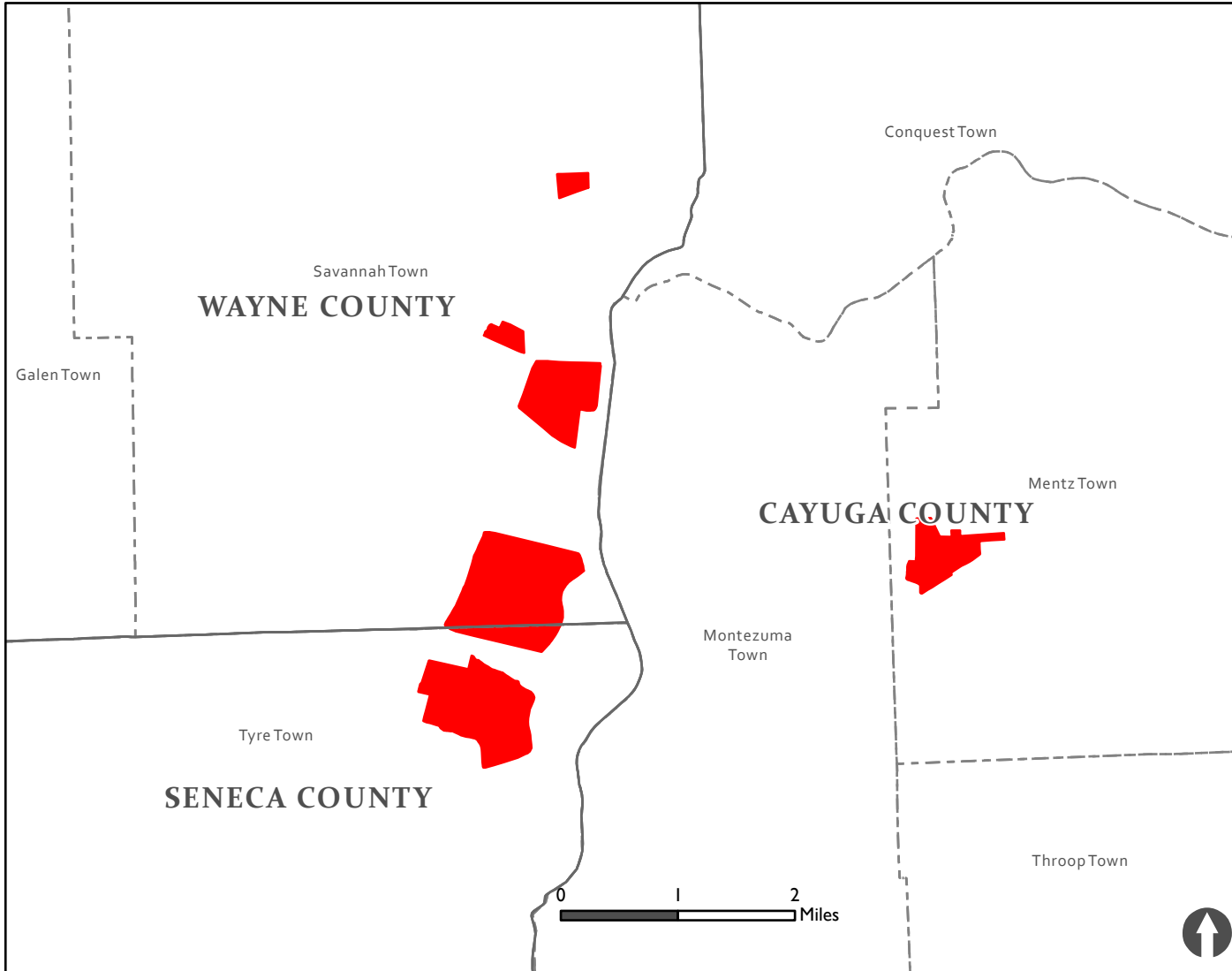
Data Sources:  
USDA APHIS PPQ  
NYSAGM

Date Created:  
5/4/2022

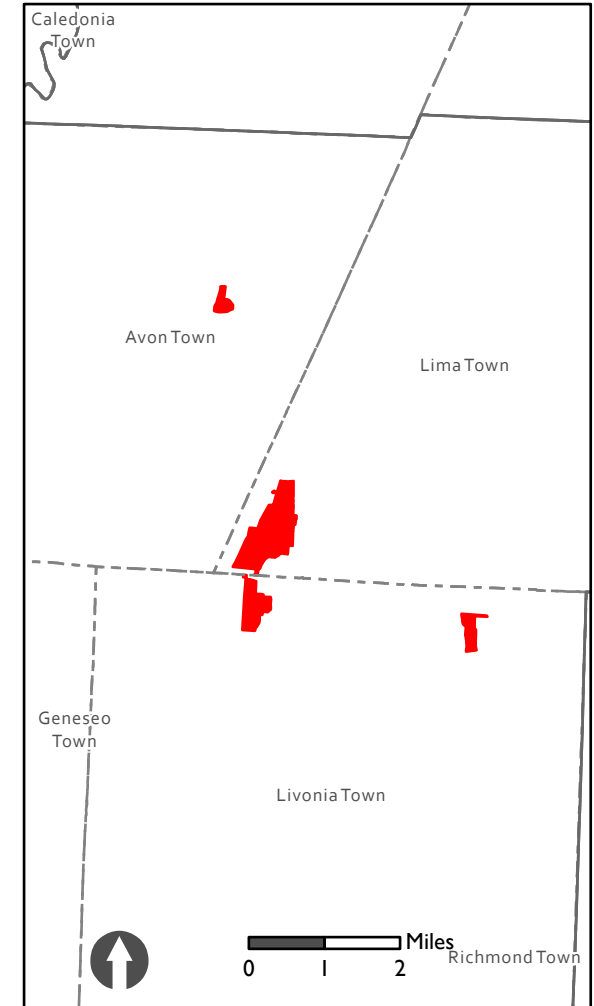
USDA APHIS PPQ  
600 E. Mermaid Lane  
Glenside, PA 19038

These data, and all the information contained therein, have been collected by the U.S. Department of Agriculture's Animal and Plant Health Inspection Service (APHIS), or by its cooperators on APHIS' behalf, for restricted government purposes only and is the sole property of APHIS. See full disclaimer: [www.aphis.usda.gov/help/map-disclaimer](http://www.aphis.usda.gov/help/map-disclaimer)

### Cayuga, Seneca and Wayne Counties



### Livingston County



Restrictions are imposed on the movement of regulated articles from a regulated area as follows: **Red into or through non-red areas**

County Boundaries 
 ● State and Federal Regulated GN Areas  
 Town Boundaries

Consult your State or Federal plant protection inspector or your county agent for assistance regarding exact areas under regulation and requirements for moving regulated articles.

For detailed information see 7 CFR 301.85 for quarantine and regulations.

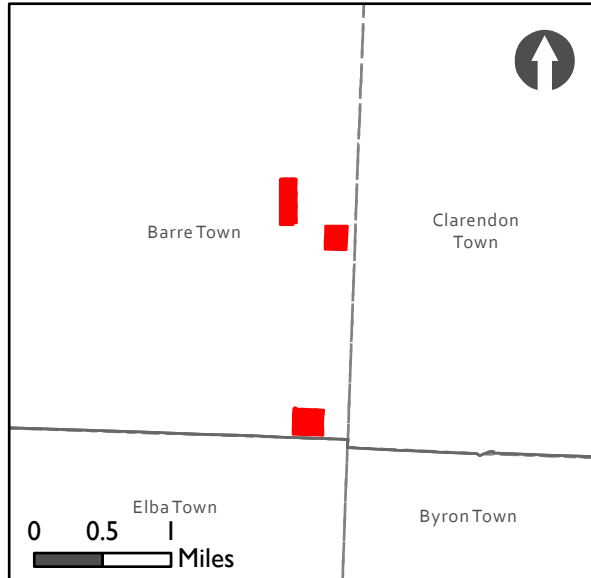
Data Sources:  
USDA APHIS PPQ  
NYSAGM

Date Created:  
5/4/2022

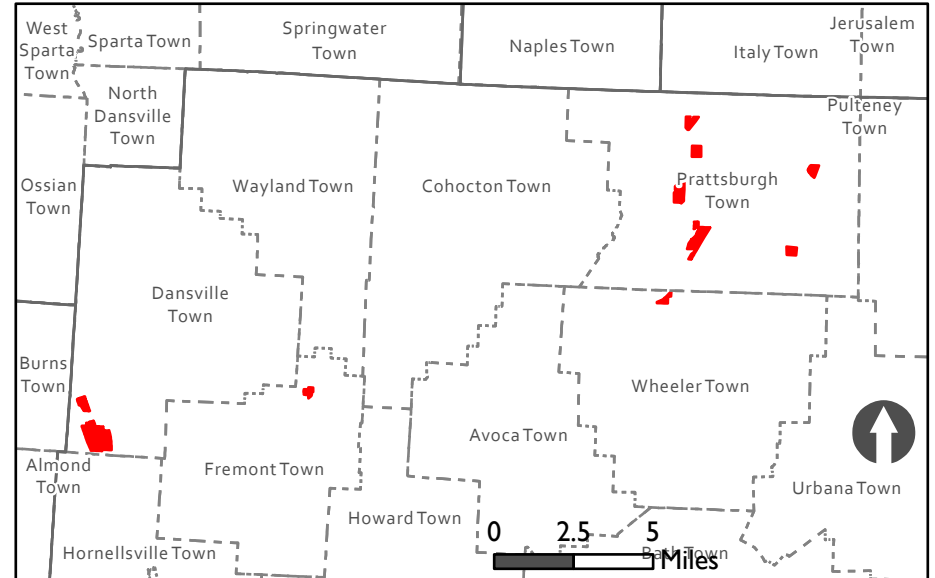
USDA APHIS PPQ  
600 E. Mermaid Lane  
Glenside, PA 19075

These data, and all the information contained therein, have been collected by the U.S. Department of Agriculture's Animal and Plant Health Inspection Service (APHIS), or by its cooperators on APHIS' behalf, for restricted government purposes only and is the sole property of APHIS. See full disclaimer: [www.aphis.usda.gov/help/map-disclaimer](http://www.aphis.usda.gov/help/map-disclaimer)

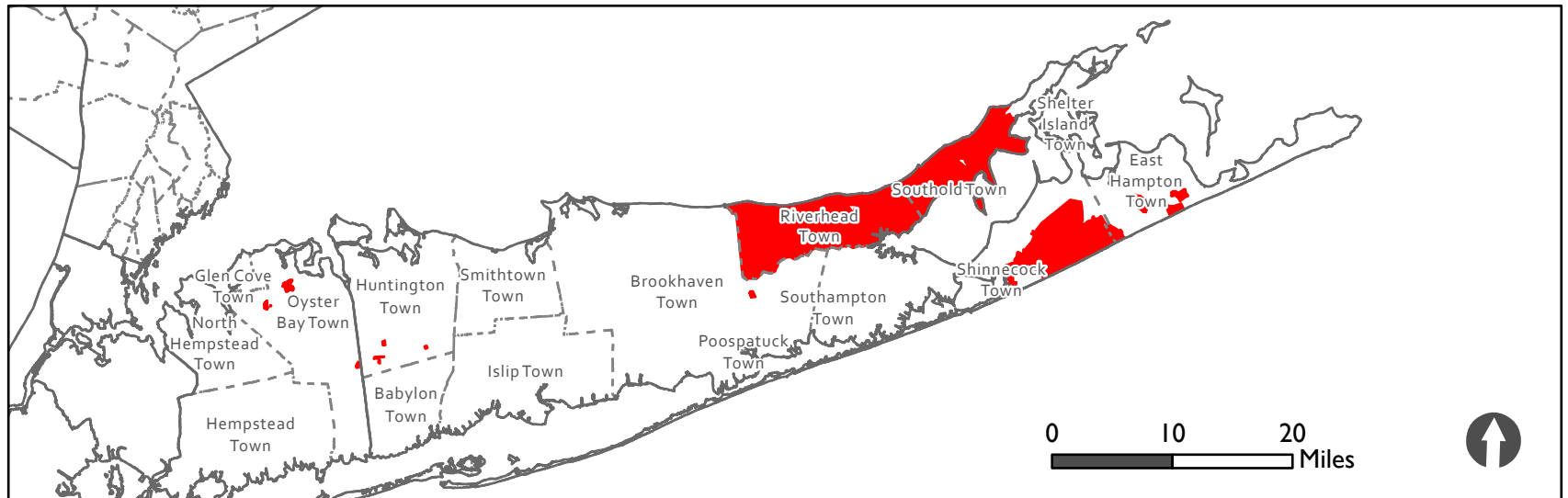
Orleans County



Steuben County



Nassau and Suffolk Counties



Restrictions are imposed on the movement of regulated articles from a regulated area as follows: **Red into or through non-red areas**

- County Boundaries
- State and Federal Regulated GN Areas
- Town Boundaries

Consult your State or Federal plant protection inspector or your county agent for assistance regarding exact areas under regulation and requirements for moving regulated articles.

For detailed information see 7 CFR 301.85 for quarantine and regulations.

Data Sources:  
USDA APHIS PPQ  
NYSAGM

Date Created:  
5/4/2022

USDA APHIS PPQ  
600 E. Mermaid Lane  
Glenside, PA 19075

These data, and all the information contained therein, have been collected by the U.S. Department of Agriculture's Animal and Plant Health Inspection Service (APHIS), or by its cooperators on APHIS' behalf, for restricted government purposes only and is the sole property of APHIS. See full disclaimer: [www.aphis.usda.gov/help/map-disclaimer](http://www.aphis.usda.gov/help/map-disclaimer)