

Breadcrumb

1. [Home](#)
2. Print
3. Pdf
4. Node
5. Entity Print

Organization

Last Modified:

APHIS is made up of 6 programs, 5 management support units, and 1 office that supports government-wide initiatives. We have more than 8,000 employees stationed in 50 States, 4 Territories, and 35 countries.

[View APHIS Organizational Chart](#)

Operational Program Units

[Animal Care](#)

Determines and promotes standards of humane care and treatment of animals through inspections and educational efforts.

[Learn More](#)



[Biotechnology Regulatory Services](#)

Protects agricultural and natural resources by ensuring safe development of genetically engineered organisms using a science-based regulatory framework.

[Learn More](#)



[International Services](#)

Provides international animal and plant health expertise to safeguard American agricultural health and promote U.S. agricultural trade.

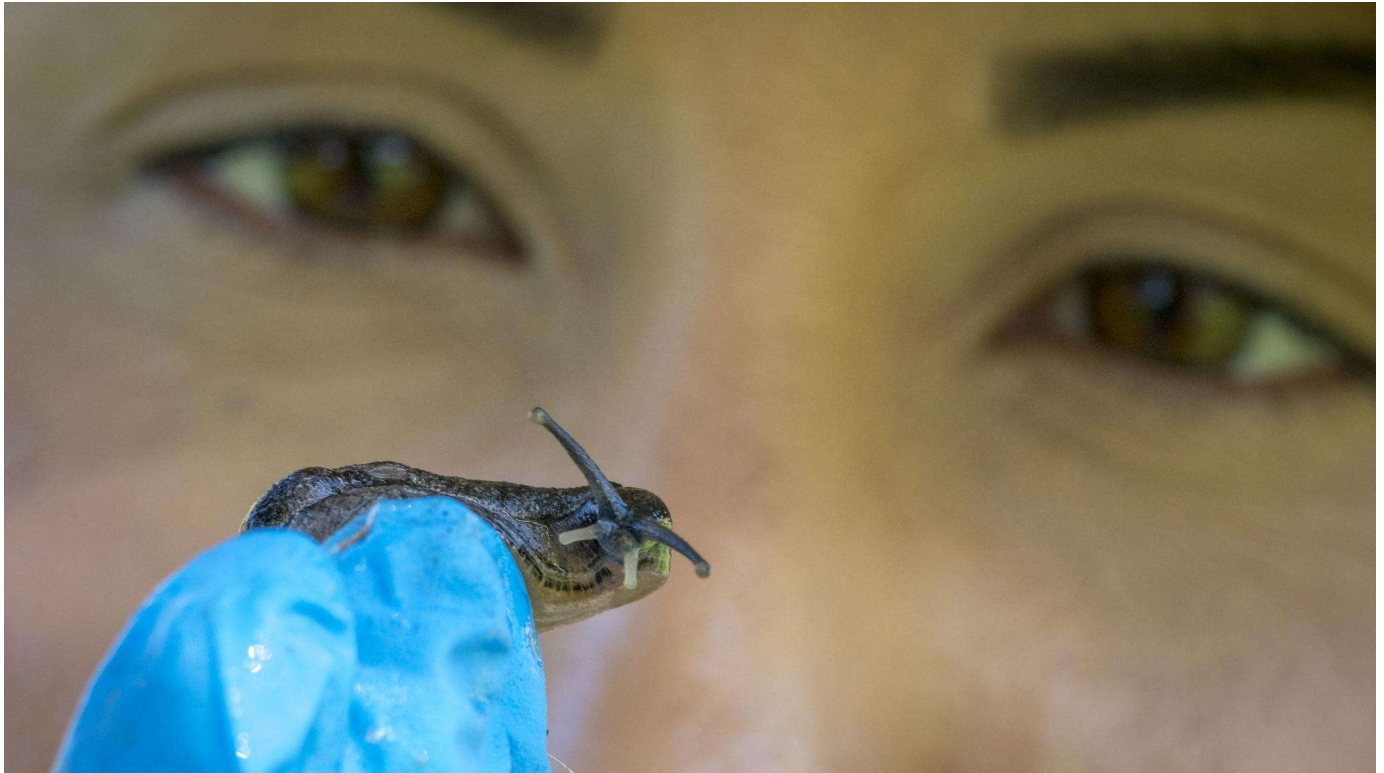
[Learn More](#)



[Plant Protection and Quarantine](#)

Safeguards agriculture and natural resources from risks associated with the entry, establishment, or spread of pests and noxious weeds.

[Learn More](#)



[Veterinary Services](#)

Protects and improves the health, quality, and marketability of our nation's animals, animal products, and veterinary biologics by preventing, controlling, and/or eliminating animal diseases, and monitoring, and promoting animal health and productivity.

[Learn More](#)



[Wildlife Services](#)

Provides leadership to resolve wildlife conflicts and create a balance allowing people and wildlife to peacefully coexist.

[Learn More](#)



Management Support Units

[Emergency and Regulatory Compliance Services \(ERCS\)](#)

Provides leadership on all issues related to emergency preparedness and response, regulatory investigative and enforcement activities, safety initiatives, and the regulation of agricultural select agents.

[Legislative and Public Affairs](#)

Manages communications with Congress, States, Tribes, industry stakeholders, trading partners and the media.

[Marketing and Regulatory Business Services](#)

Provides resource management and administrative services to APHIS and USDA's Agricultural Marketing Service.

[Policy and Program Development](#)

Provides rigorous policy analysis and budgetary and regulatory development for APHIS that is consistent with the Agency's environmental stewardship goals and legal authorities. Also conducts critical programmatic evaluations and reviews to ensure programs are operating efficiently and effectively.

Offices

Office of Civil Rights, Diversity, and Inclusion

Our [Office of Civil Rights, Diversity, and Inclusion](#) provides leadership, direction, and technical support to all employees and external service recipients on Civil Rights matters.

Office of the National Tribal Liaison

Our [Office of the National Tribal Liaison](#) serves as a single point of contact for Tribal issues and works to ensure that relevant programs and policies are efficient, easy to understand, accessible, and developed in consultation with the Native American

Tribes they impact.

[Print](#)