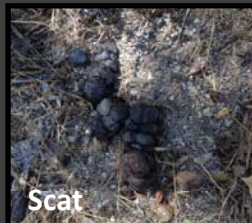
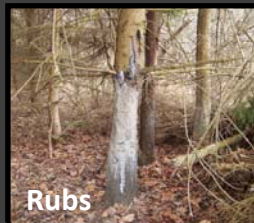
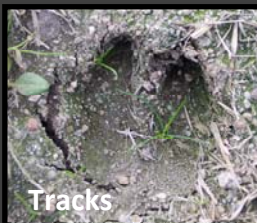


Identifying Invasive Feral Swine

Feral swine (*Sus scrofa*) are also commonly called wild hogs, wild boars, razorbacks, Russian boars, Eurasian boars, feral hogs, and feral pigs.



Signs of Feral Swine



To learn more about this invasive animal, the damage they cause, or to seek advice and assistance in dealing with feral swine, contact your local USDA, APHIS, Wildlife Services Program at 1-866-4USDA-WS or visit www.aphis.usda.gov/wildlife-damage/stopferalswine.