



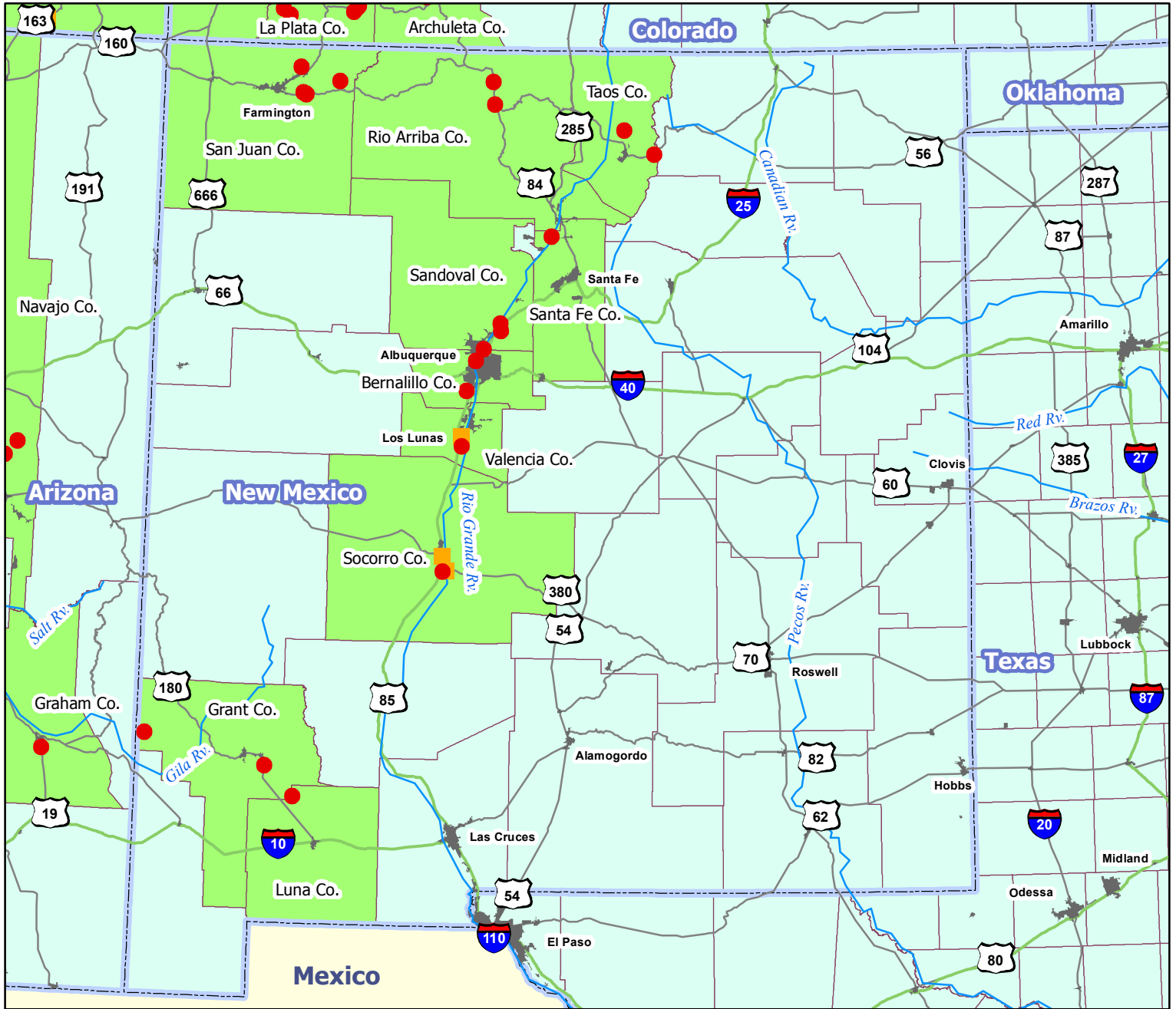
# New Mexico Cumulative

No Changes Since 10/18/2005

# 2005 Vesicular Stomatitis Outbreak Positive Premises

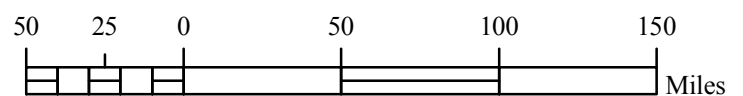
From: 04/27/05  
Through: Current

For Official Use Only



Projection: Albers Equal Area Conic

Central Meridian: 105° West



## Legend

### Investigated Species

- Equine
- Bovine

### Cumulative Infection Status

- Infected Counties
- Non-Infected Counties

- Water
- Highways
- USRoutes
- UrbanAreas
- States



The U.S. Department of Agriculture gives no warranty, expressed or implied, as to the accuracy, reliability, or completeness of these data, nor is the Department liable for any misuse of these data. The user specifically agrees not to misrepresent these data, nor imply the changes the user makes are approved by the U.S. Department of Agriculture.