

SAVING MONKEYS - PROMOTING COMPASSION



JUNGLE FRIENDS
PRIMATE SANCTUARY



Managing Abnormal Behavior in a Sanctuary Environment



Presented by Kari Bagnall, Founder and Executive Director
Jungle Friends Primate Sanctuary – Gainesville, FL



Challenges and Therapies

JUNGLE FRIENDS
PRIMATE SANCTUARY

Captive primates may face a host of physical, social, emotional and psychological issues from which they may not recover, even when placed in a more appropriate environment.

Jungle Friends incorporates many different remedies, from fluoxetine to diazepam and CBD Oil to lavender oil.

We also use other alternatives – amino acids, vitamins, homeopathy, herbs and food.



Monkers and Dylan



Abnormal Behaviors

JUNGLE FRIENDS
PRIMATE SANCTUARY

- Captive monkeys suffer from a variety of psychological disorders and atypical behaviors.
- Some of these include: depression, anxiety, post-traumatic stress disorder, stereotypical and self-injurious behaviors.
- Improvement is typically seen with a combination of an enriched or naturalistic environment, medical treatment and introduction to other monkeys.
- Determine why the monkeys are engaging in abnormal behaviors. Is it physical or psychological? Each monkey should be treated as an individual.



Jersey



Self-Injurious Behavior

JUNGLE FRIENDS
PRIMATE SANCTUARY



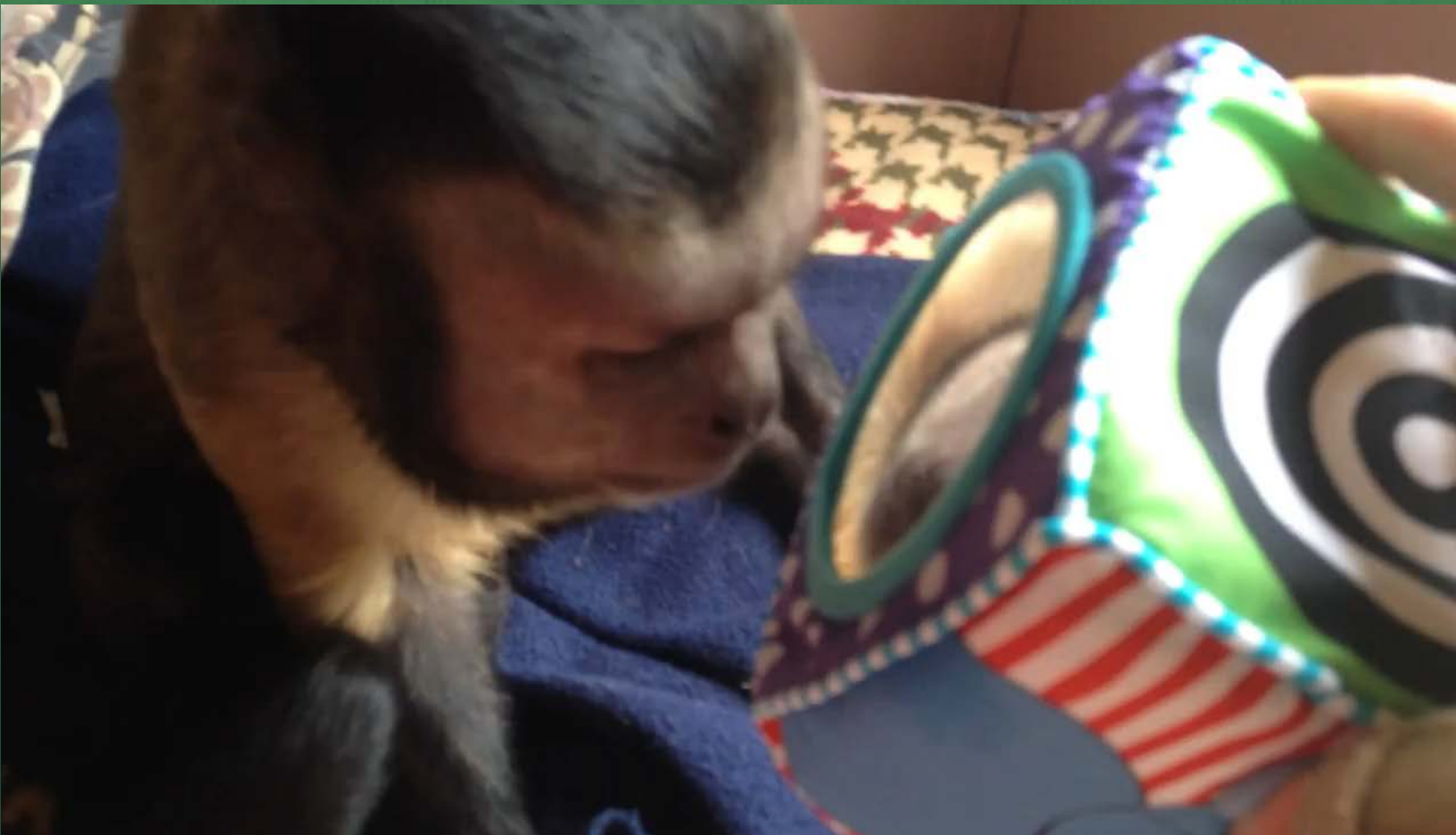
Jersey was a privately owned primate (POP) who had bitten off one toe and was chewing on both feet and his hands – his flesh was literally dying. Jersey's right leg had to be amputated and part of his left foot.





Mirrors for Wound Distraction

JUNGLE FRIENDS
PRIMATE SANCTUARY





Jersey's Recovery

JUNGLE FRIENDS
PRIMATE SANCTUARY



Jersey is very spirited and has overcome his disabilities – he uses his tail as a leg. Jersey and Elizabeth are a model couple, grooming each other and engaging in play.



Self-Injurious Behavior

JUNGLE FRIENDS
PRIMATE SANCTUARY

Ricki was also a POP who was species isolated. He became more aggressive and agitated, and started self-attacking.

Ricki's self-injurious behavior became unmanageable. He had to have his leg amputated and was put on Fluoxetine.

Ricki was introduced to Zoey at the sanctuary and is finally enjoying the companionship he's always needed.



Ricki and Zoey



Self Attacking - Digit Sucking

JUNGLE FRIENDS
PRIMATE SANCTUARY



Mario was a POP who was kept illegally until he escaped his cage. Baby monkeys who are "pulled" from their mothers before they are weaned or would naturally separate usually, if not always, have problems.



Self Attacking - Digit Sucking

JUNGLE FRIENDS
PRIMATE SANCTUARY



Mario stopped his self-attacking behavior as soon as he met Tessa, although he still sucks his thumb and his toe.



Distraction Bandages

JUNGLE FRIENDS
PRIMATE SANCTUARY



Bandaging Gamble's mysterious wound.



Grasping and Rocking

JUNGLE FRIENDS
PRIMATE SANCTUARY

Gamble has been in our clinic for several weeks with a wound on his back, compounded by pneumonia and a MRSA infection. Gamble is a POP who lives with his brother in an appropriate environment. When he became ill, it triggered his abnormal rocking behavior.



Self-Injurious Behavior Due to Medical Condition



Wendell was a POP who had chewed his hand and bitten off a toe. He was diagnosed as a diabetic with neuropathy.



Self-Attacking Behaviors

JUNGLE FRIENDS
PRIMATE SANCTUARY

Cuzco and his family were captured in the wild, shipped illegally to China and then back to LA, without food or water. Cuzco survived. His family did not.

The San Diego Zoo took him in, and then sent him to Jungle Friends to find companionship.

When Cuzco arrived he was on antidepressants, neuropathy medication and antianxiety drugs for self-attacking. He is now surrounded by his own species and is off all medication.



Cuzco



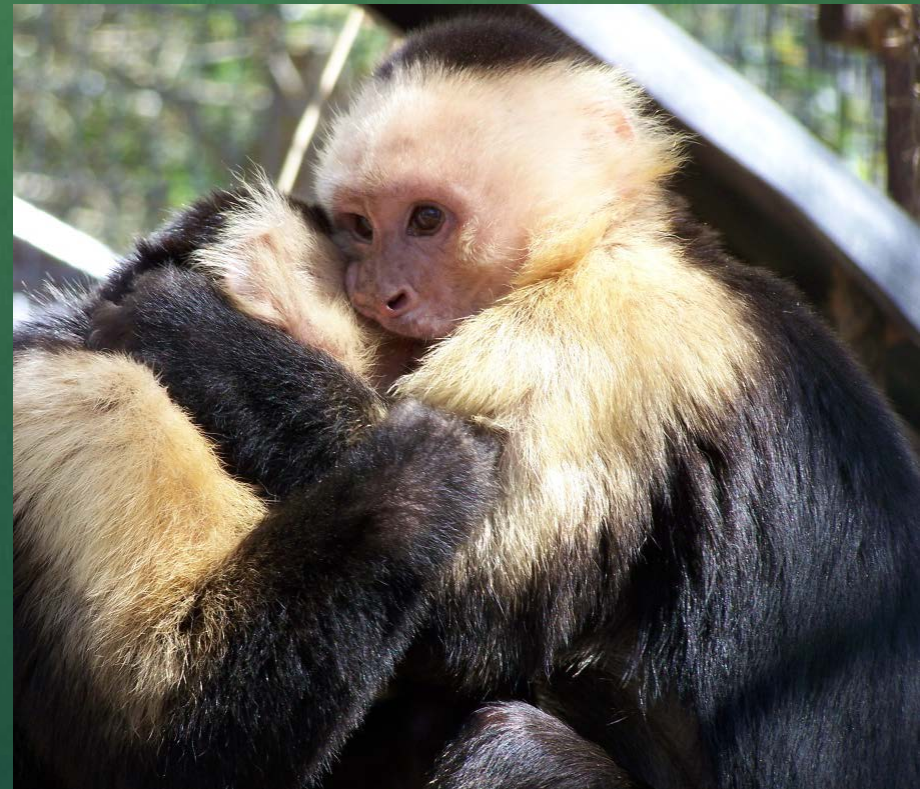
Self-Attacking Behaviors

JUNGLE FRIENDS
PRIMATE SANCTUARY

Originally Jimmy was a POP and later sold into the entertainment industry.

When Jimmy arrived, he was self-attacking and had problems socializing. He was referred to as “Jimmy the Jerk”.

A naturalistic environment and the right friends were all Jimmy needed to stop all abnormal behaviors.



Floating Limb



Iris



Iris Meets Scooter



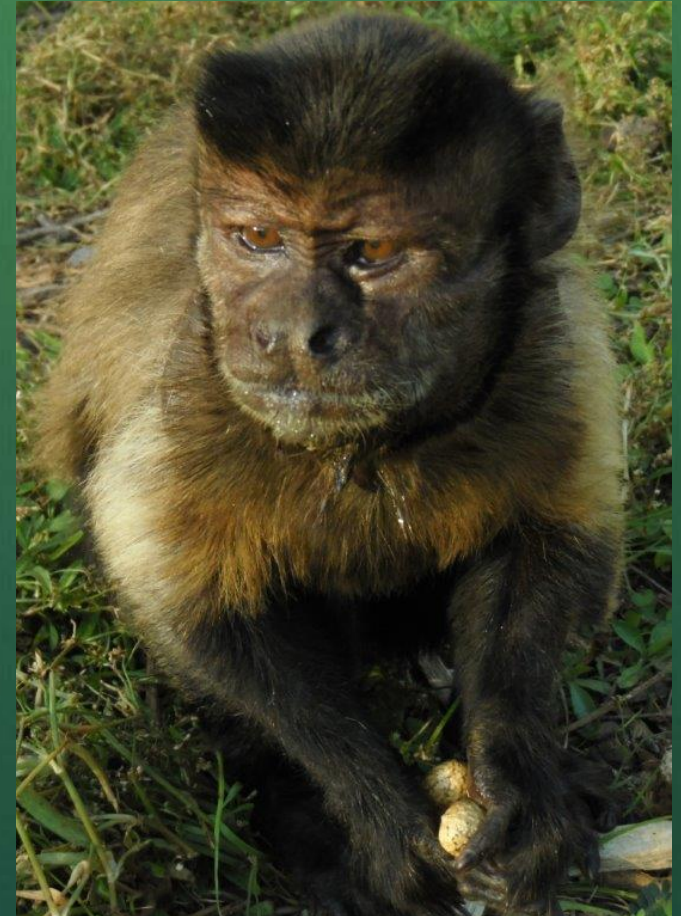
Fear-based Behaviors

JUNGLE FRIENDS
PRIMATE SANCTUARY

Charles Manson was captured in the rainforest as a juvenile and sold into research, where he was singly-housed and used in iron-toxicity studies for 20 years. Singly-housed monkeys are more likely to exhibit abnormal behaviors.

Unfortunately, 12 years later he still lives alone. He has had many failed socializations. Other monkeys from the same lab are successfully socialized. Monkeys are all individuals.

We are still hopeful for a good match.



Charles Manson



Habitats for the Disabled

JUNGLE FRIENDS
PRIMATE SANCTUARY





KC and Bongo Playing

JUNGLE FRIENDS
PRIMATE SANCTUARY



Bongo became paraplegic due to a ruptured disc. We were told he would never walk again. Euthanasia was encouraged. Instead, we brought him back to the sanctuary where his dear friend KC showered him with tender-loving care. Bongo not only walks—he plays!



Over-Grooming

JUNGLE FRIENDS
PRIMATE SANCTUARY

Samantha and Charlotte are biological sisters. They sleep together, eat together, play and groom, or should I say, Samantha over-grooms herself, and her sister Charlotte.

No matter what we have tried, Samantha continues to over-groom.



Samantha over-grooming herself



Charlotte has been over-groomed by Samantha





Hair Pulling and Eating

JUNGLE FRIENDS
PRIMATE SANCTUARY



One study in macaques concluded that this is an aggressive behavioral disorder reflecting adjustment problems to a stressful environment.

Samantha and Charlotte

Rough Housing



Even though Samantha and Charlotte are living in the best environment I can give them, Samantha still over-grooms herself and her sister.



Hair Loss

JUNGLE FRIENDS
PRIMATE SANCTUARY



Sloth had much of his hair missing when he was released from the lab.



Sloth's hair growth within the first month of being outside.



Hair Loss

JUNGLE FRIENDS
PRIMATE SANCTUARY

“At first, we could not figure out why quite a few of our squirrel monkeys had hair loss or generalized alopecia. We did skin scrapes, prophylactic deworming, and skin biopsies that revealed no abnormalities. After visiting another facility in the summer where their squirrel monkeys were housed outdoors, myself and a work colleague could not help but notice how beautiful and full the haircoats of these squirrel monkeys were compared to our animals. After questioning the staff, the only difference between their animals and our animals was that their squirrel monkeys were housed outdoors and our animals were not. We then hypothesized that our animals may have hair loss or hair thinning due to a vitamin D deficiency. After the daily Allerderm with vitamin D supplementation their fur began to improve.” – Veterinarian at the lab



Moe

Sunshine and Fresh Air Can Promote Hair Growth



Joey and Earl were released from research and arrived looking much like Moe. After a few months of the great outdoors and companionship, they were sporting handsome coats of fur.

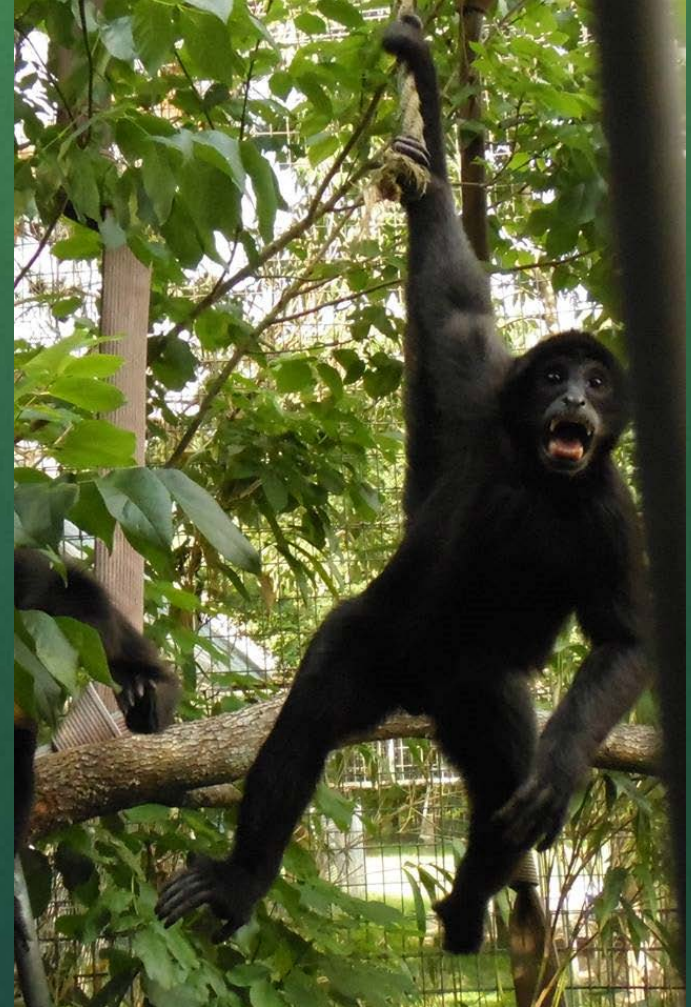


Baby Udi – Udi Monster

JUNGLE FRIENDS
PRIMATE SANCTUARY



Radiographs showed Udi had a severe case of metabolic bone disease, he couldn't walk or stand. Sunshine made all the difference.





JUNGLE FRIENDS
PRIMATE SANCTUARY

Social Grouping Same Species



Social Grouping

Mixed species





JUNGLE FRIENDS
PRIMATE SANCTUARY

Monkey Surrogates

Mochi was an infant when he arrived at Jungle Friends after an animal facility closed.

Monkers and Zumie proved to be wonderful surrogate mothers for baby Mochi, carrying him on their backs, nurturing him, grooming and playing with him.

Due to this mothering, Mochi has no abnormal behaviors.





Monkey Surrogacy

JUNGLE FRIENDS
PRIMATE SANCTUARY



Monkers and Baby Mochi



Surrogacy Success for Dylan

JUNGLE FRIENDS
PRIMATE SANCTUARY



Dylan was confiscated by the authorities and arrived so malnourished he could barely lift his tiny head. Then he met Monkers and Zumie who provided the mothering he was denied. Dylan has no abnormal behaviors!

Surrogacy Success

Jasper & ChiChi

ChiChi was a POP and Jasper was traded in a used car deal and then given to a teenager as a birthday present.

Both ChiChi and Jasper were taken from their mothers at a very early age. Both were clutching inanimate objects.

Once these two were introduced, both monkeys gave up their objects for each other. Neither have any abnormal behaviors.



ChiChi



Jasper



Anointing as a Social Activity



Ebi and Mickey anointing with oranges, and a bit of orange bashing to make orange juice too!



Aromatherapy Anointing

JUNGLE FRIENDS
PRIMATE SANCTUARY



Dodger Anointing with Lavender Oil



Aromatherapy with Diffuser

JUNGLE FRIENDS
PRIMATE SANCTUARY



Oil Diffuser used in our on-site clinic.

Natural Remedies



Puchi drinks his CBD Oil



Preparing CBD oil snacks



JUNGLE FRIENDS
PRIMATE SANCTUARY

Anti-Depressants/ Anxiety Medications



Elvis



Wanda



Mario



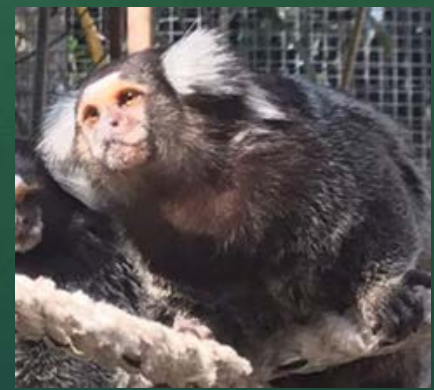
Spanky



Joey



Darwin



Ricki



Naturalistic Habitats

JUNGLE FRIENDS
PRIMATE SANCTUARY





Naturalistic Habitats

JUNGLE FRIENDS
PRIMATE SANCTUARY





Naturalistic Habitats

JUNGLE FRIENDS
PRIMATE SANCTUARY





Naturalistic Habitats

JUNGLE FRIENDS
PRIMATE SANCTUARY





Naturalistic Habitats

JUNGLE FRIENDS
PRIMATE SANCTUARY





Naturalistic Habitats

JUNGLE FRIENDS
PRIMATE SANCTUARY





Naturalistic Habitats

JUNGLE FRIENDS
PRIMATE SANCTUARY





Naturalistic Habitats

JUNGLE FRIENDS
PRIMATE SANCTUARY





Naturalistic Habitats

JUNGLE FRIENDS
PRIMATE SANCTUARY





Naturalistic Habitats

JUNGLE FRIENDS
PRIMATE SANCTUARY





Naturalistic Habitats

JUNGLE FRIENDS
PRIMATE SANCTUARY





Environmental Enrichment

JUNGLE FRIENDS
PRIMATE SANCTUARY





Environmental Enrichment

JUNGLE FRIENDS
PRIMATE SANCTUARY





Environmental Enrichment

JUNGLE FRIENDS
PRIMATE SANCTUARY





Environmental Enrichment

JUNGLE FRIENDS
PRIMATE SANCTUARY





Environmental Enrichment

JUNGLE FRIENDS
PRIMATE SANCTUARY





Environmental Enrichment

JUNGLE FRIENDS
PRIMATE SANCTUARY





Environmental Enrichment

JUNGLE FRIENDS
PRIMATE SANCTUARY





Environmental Enrichment

JUNGLE FRIENDS
PRIMATE SANCTUARY





Environmental Enrichment

JUNGLE FRIENDS
PRIMATE SANCTUARY





Environmental Enrichment

JUNGLE FRIENDS
PRIMATE SANCTUARY





Environmental Enrichment

JUNGLE FRIENDS
PRIMATE SANCTUARY





Environmental Enrichment

JUNGLE FRIENDS
PRIMATE SANCTUARY





Environmental Enrichment

JUNGLE FRIENDS
PRIMATE SANCTUARY





Environmental Enrichment

JUNGLE FRIENDS
PRIMATE SANCTUARY





Environmental Enrichment

JUNGLE FRIENDS
PRIMATE SANCTUARY





Environmental Enrichment

JUNGLE FRIENDS
PRIMATE SANCTUARY





Environmental Enrichment

JUNGLE FRIENDS
PRIMATE SANCTUARY





Runways Everywhere!

JUNGLE FRIENDS
PRIMATE SANCTUARY





Monkeys on the Move

JUNGLE FRIENDS
PRIMATE SANCTUARY



Pip and Zeke

Drop-Down Chutes = Less Stress



Drop-down chutes on the runways are very helpful tools for a safe capture. Monkeys are easily moved from the drop chutes to the clinic or other habitats.



Utilizing a Drop-Down Chute

JUNGLE FRIENDS
PRIMATE SANCTUARY



Chewy was medically discharged from our onsite clinic and Golden Child was very happy about that!



JUNGLE FRIENDS
PRIMATE SANCTUARY

Runway 99er!

UNDER CONSTRUCTION



Panoramic view of our new super runway!



Prevention Is the Key

JUNGLE FRIENDS
PRIMATE SANCTUARY



Baby monkeys need their mothers.



JUNGLE FRIENDS
PRIMATE SANCTUARY

**Jungle Friends Primate Sanctuary
Gainesville, FL**

**Kari Bagnall, Founder & Executive Director
karibagnall@junglefriends.org**

www.JungleFriends.org