

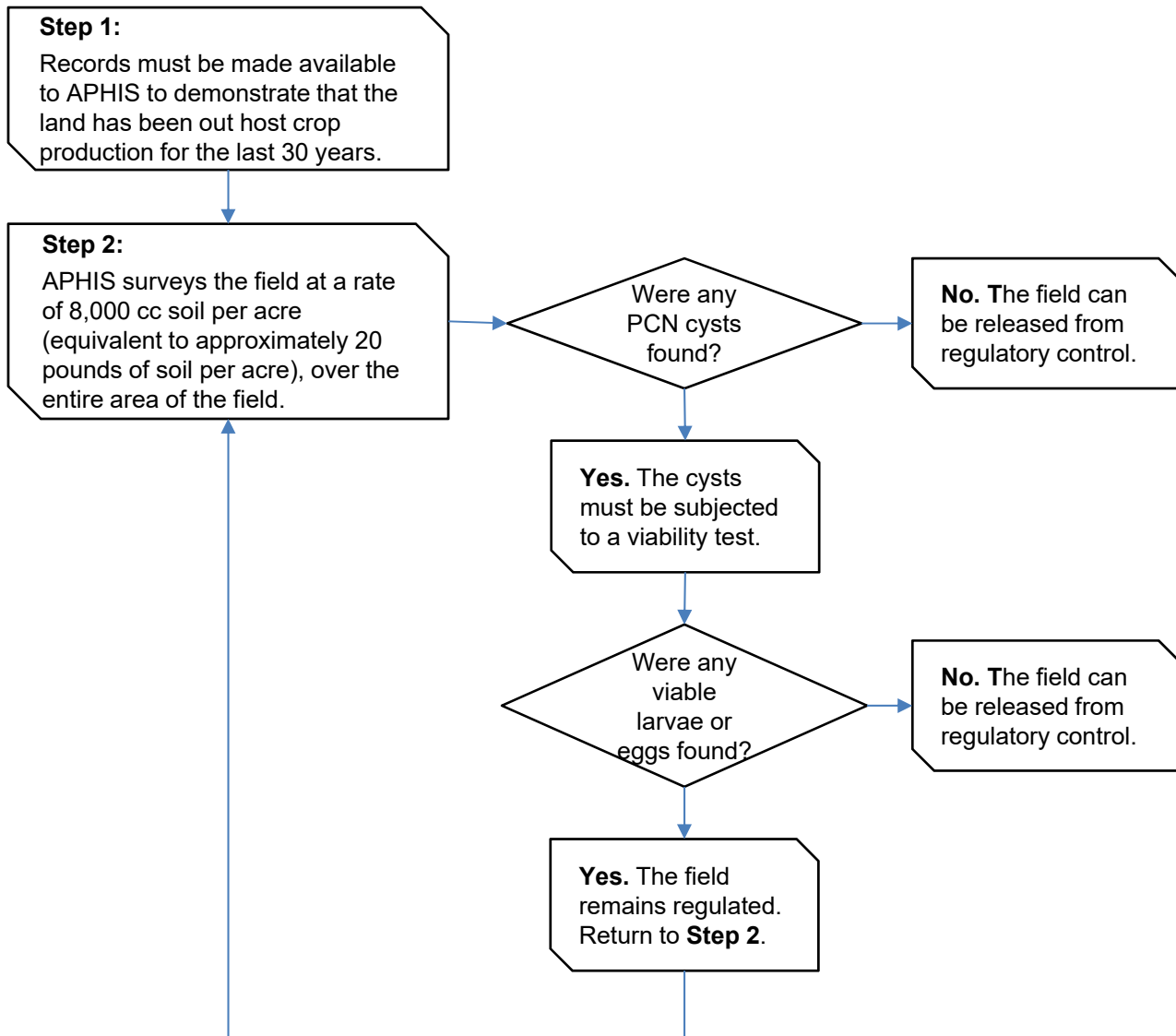
Pale Cyst Nematode (PCN) Program

Deregulation Protocol for Agricultural Land No Longer in Host Crop Production

Summary:

A deregulation option exists for regulated fields where agriculture does still occur but where all host crop production was prohibited or has ceased for a minimum of 30 years. This could include infested or associated status fields. During the 30-year time period, the fields may have been used for various purposes, including but not limited to hobby farms, fallow fields, forage crops, grain fields, nurseries, pasture, riding academies, etc.

To become deregulated, fields must complete the following two-step process.



Pale Cyst Nematode (PCN) Program Deregulation Protocol for Regulated Non-Agricultural Land

Summary:

A deregulation option exists for regulated fields (associated or infested status) that are converted to a non-agricultural use. Non-agricultural use includes but is not limited to, highways or other paved roads, paved parking lots, industrial parks, other commercial developments (such as shopping malls, apartment housing, and office complexes), residential developments, state or national parks, other recreational areas, racetracks, golf courses, etc.

All regulated land in this category may be released if it meets the following criteria:

- Records must be made available to APHIS to demonstrate that the land has been out of agricultural production for the last 20 years and will not return to agriculture.
- or,
- Construction for non-agricultural purposes has rendered the land non-tillable and is not likely to ever return to agricultural production.