

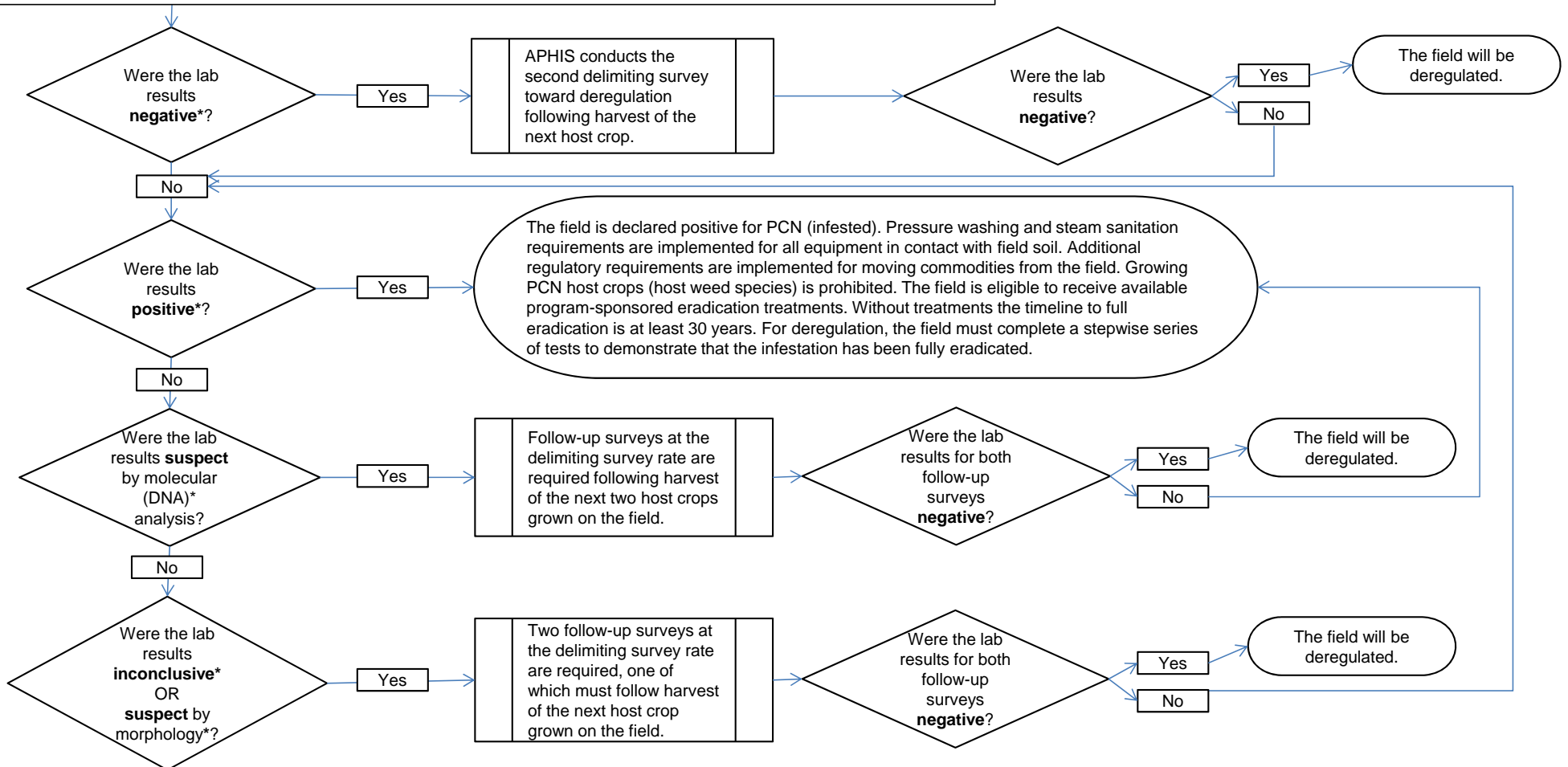
Summary:

A field is regulated as an associated field due to its exposure to soil from an infested field. Pressure washing sanitation requirements are implemented for all equipment in contact with field soil. Other regulatory requirements are implemented for movement of commodities from the field. To become deregulated, the field must complete a series of two full-field delimiting surveys, each following harvest of a host crop (PCN-susceptible potatoes), at a rate of 8,000 cc soil per acre (equivalent to approximately 20 pounds of soil per acre).

If a host crop was grown and harvested any time after the exposure event, the field is eligible to receive the first delimiting survey towards deregulation. If a host crop has not been grown in the field since the time of exposure, a baseline field survey at the delimiting survey rate is required as soon as practicable and does not count toward the two delimiting surveys following a host crop required for deregulation.

APHIS conducts the first delimiting survey toward deregulation:

Pale Cyst Nematode (PCN) Program Associated Field Deregulation Protocol (if remaining in host crop production)



*See 'PCN program lab results definitions' for more information.