

Plum Pox Virus
***Potyvirus* PPV**
Photo Gallery of Symptoms



Symptoms of plum pox virus on apricot fruit and leaves.
Photo by: John Hammond, USDA Agricultural Research Service, Bugwood.org



Leaf symptoms of plum pox potyvirus infection on peach.
Photo by: Biologische Bundesanstalt für Land-und Forstwirtschaft, Bugwood.org



Plum pox potyvirus: yellow rings on a yellow-fleshed peach cultivar.
Photo by: European and Mediterranean Plant Protection Organization Archive, Bugwood.org



An alate (winged) green peach aphid (*Myzus persicae*), an important vector of PPV.
Photo by: Scott Bauer, USDA Agricultural Research Service, Bugwood.org



The yellow spots on this leaf are evidence of infection by the Pennsylvania isolate of plum pox virus. The leaf is from *Chenopodium foetidum*, an important indicator species of plum pox disease.

Photo by: Scott Bauer, USDA Agricultural Research Service, Bugwood.org



Symptoms of plum pox on fruits and seed on apricot, showing brownish depressions and grooves on the surface.

Photo by: Ministry of Agriculture and Regional Development Archive, Ministry of Agriculture and Regional Development, Bugwood.org



These plums contain a gene that makes them highly resistant to plum pox virus.

Photo by: Scott Bauer, USDA Agricultural Research Service, Bugwood.org



Fruitfall of plum due to plum pox potyvirus infection.

Photo by: Biologische Bundesanstalt für Land-und Forstwirtschaft, Bugwood.org



Fruit symptoms of plum pox potyvirus infection on plum.

Photo by: Biologische Bundesanstalt für Land-und Forstwirtschaft, Bugwood.org



Leaf symptoms of plum pox potyvirus infection on plum cv. Salem.

Photo by: Biologische Bundesanstalt für Land-und Forstwirtschaft, Bugwood.org



Leaf symptoms of plum pox potyvirus infection on plum cv. Fränkischer.

Photo by: Biologische Bundesanstalt für Land-und Forstwirtschaft, Bugwood.org



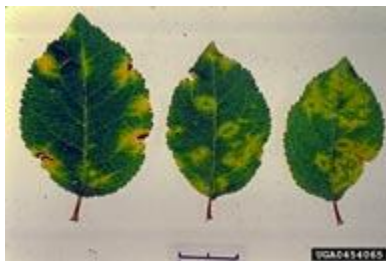
Leaf symptoms of plum pox potyvirus infection on plum cv. Ruth Gerstetter.
Photo by: Biologische Bundesanstalt für Land-und Forstwirtschaft, Bugwood.org



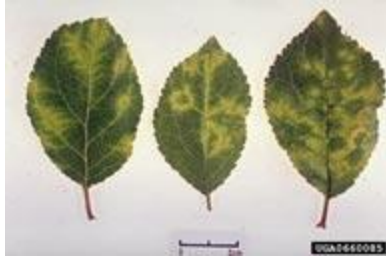
Leaf symptoms of plum pox potyvirus infection on plum cv. Great Green.
Photo by: Biologische Bundesanstalt für Land-und Forstwirtschaft, Bugwood.org



Symptoms of plum pox potyvirus infection on leaves of plum cv. Brompton, showing yellowish rings.
Photo by: Biologische Bundesanstalt für Land-und Forstwirtschaft, Bugwood.org



Symptoms of plum pox on leaves of plum cv. Ackermann, showing yellowish flecks, rings and mottling.
Photo by: Biologische Bundesanstalt für Land-und Forstwirtschaft, Bugwood.org



Leaf symptoms of plum pox potyvirus infection on plum cv. St Julien.
Photo by: Biologische Bundesanstalt für Land-und Forstwirtschaft, Bugwood.org



Ring and band mosaic due to plum pox potyvirus on cherry plum (*Prunus cerasifera* Ehrh.).
Photo by: Biologische Bundesanstalt für Land-und Forstwirtschaft, Bugwood.org



Symptoms of plum pox on fruits of plum cv. Hauszwetsche, showing bluish depressions and grooves on the surface.
Photo by: Biologische Bundesanstalt für Land-und Forstwirtschaft, Bugwood.org



Fruit symptoms of plum pox potyvirus infection on plum.
Photo by: Biologische Bundesanstalt für Land-und Forstwirtschaft, Bugwood.org