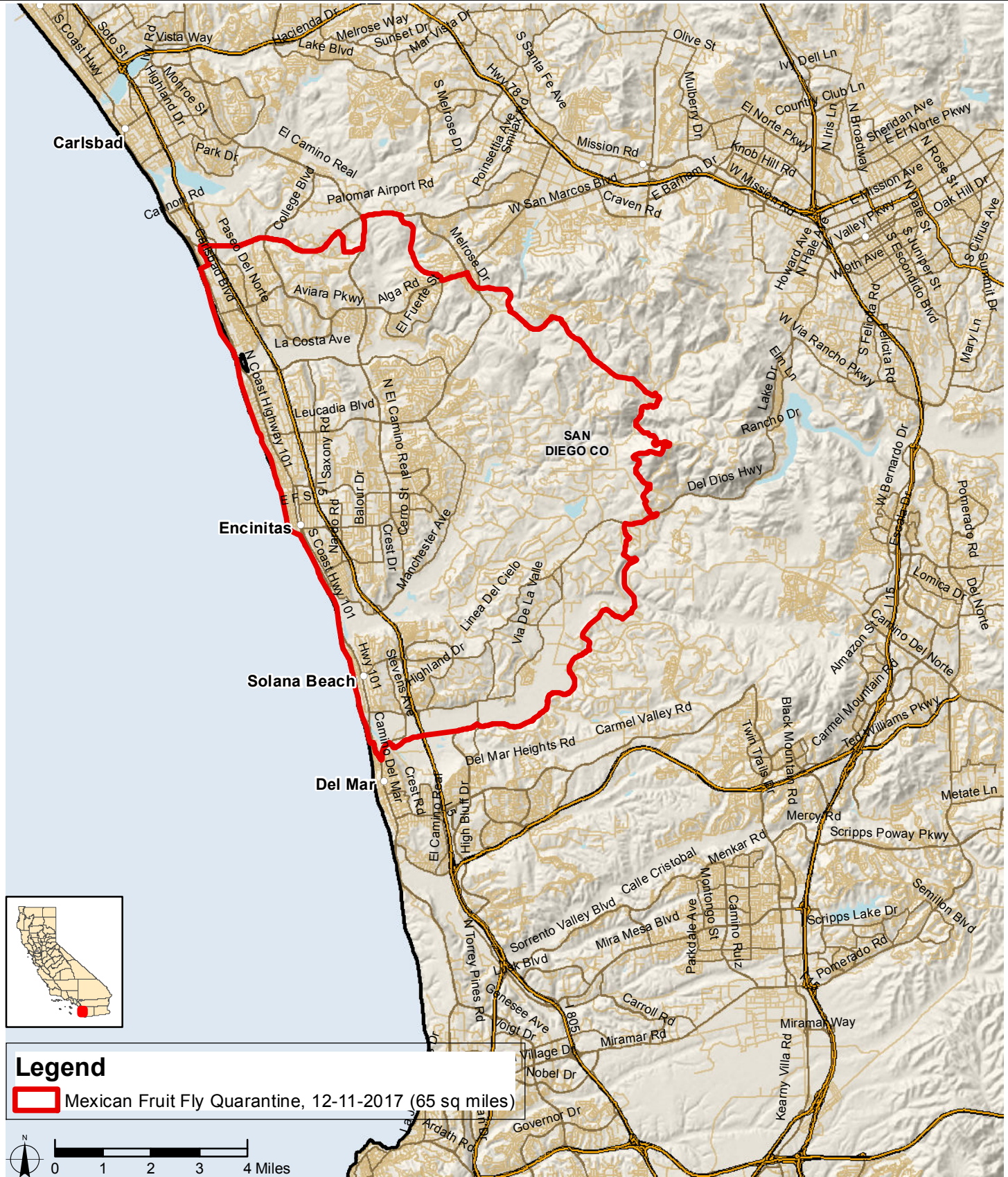


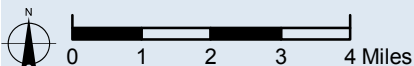


Mexican Fruit Fly (*Anastrepha ludens*) San Diego County, California - 2017



Legend

 Mexican Fruit Fly Quarantine, 12-11-2017 (65 sq miles)



USDA, APHIS, PPO
GIS Specialist - California
650 Capitol Mall, Suite 6-400
Sacramento, CA 95814

Data Source:
USDA, APHIS, PPO
CA Dept of Food & Agric
TeleAtlas

Coordinate-System:
CA Teale Albers, NAD 83

Date Printed: 12/20/2017
Time Printed: 07:21 hrs PT

These data, and all the information contained therein, have been collected by the U.S. Department of Agriculture's Animal and Plant Health Inspection Service (APHIS), or by its cooperators on APHIS' behalf, for restricted government purposes only and is the sole property of APHIS. Data may be disseminated on a need-to-know basis only and must be used for their intended government purpose(s). All information contained within these data are subject to required Federal safeguards and shall only be shared and/or used consistent with the Trade Secrets Act [18 U.S.C. 1905], the Privacy Act of 1974, as amended [5 U.S.C. 552a], the Freedom of Information Act [5 U.S.C. 552], the confidentiality provisions of the Food Security Act of 1985 [7 U.S.C. 2276], Section 1619 of the Food, Conservation, and Energy Act of 2008 [7 U.S.C. 8791], and other applicable Federal laws and implementing regulations, as well as with the confidentiality or non-disclosure provisions of any other agreement entered into between APHIS and a cooperator.