



# Understanding the DEEP Process

-

Deregulation Evaluation of Established Pests

## What Is The Purpose Of DEEP?

- A mechanism for PPQ to evaluate pests that are:
  - Quarantine at U.S. port(s) of entry (POE) but no longer meet the IPPC definition of a quarantine pest
    - Pest is established in U.S.
    - Pest is not under federal official control
- **‘Deregulation’ through DEEP means changing the pest status from quarantine to non-quarantine at U.S. POE**



# What Are The Benefits Of DEEP?

- **Remove entry requirements for pests that APHIS no longer considers a risk**
  - Cost savings for containing, eradicating, excluding pests
- **Removal of unnecessary import requirements**
  - Harmonization of foreign and domestic requirements → actions at U.S. POE are consistent with those taken domestically
  - Facilitation of safe and fair trade



## When Does A Pest Qualify For DEEP?

1. Current port policy is quarantine for all or some of the U.S.  
*\*a pest's regulatory status may vary with POE policy (ex: quarantine for U.S. mainland, but non-quarantine for HI, PR, and/or other territories).*
2. Pest is established in one or more U.S. states/territories where it is considered quarantine at the associated POE
3. Pest has been in the U.S. for a long period of time, usually 5 years or more and not under official control



*Agriotes lineatus* (Lined Click Beetle)

# How Is A Pest Evaluated through DEEP?

- Evaluation by S&T-PPRA (Plant Pest Risk Analysis)
- Analysis considers the following:
  - What is the global distribution of the pest?
  - What is the host range and biology of the pest?
  - Where is the pest distributed in the U.S.?
  - How long has the pest been in the U.S.?
  - What economic/environmental damage does the pest currently cause in the U.S.?
  - What potential future damage may the pest cause in new areas?
  - How feasible (technically, economically) is a federal official control program?



## What Does The DEEP Report Do?

- Provides recommendation to change the pest status from quarantine to non-quarantine for all or a part of the U.S., if:
  - The pest does not have the potential for significant impacts, or
  - Eradication and/or containment is not feasible
- Assesses if federal official control is warranted and provides justification for changing PPQ port policy

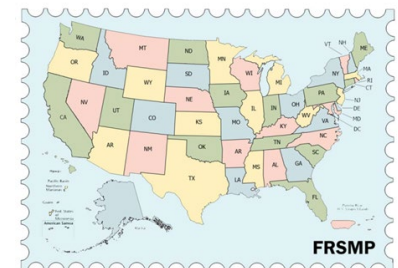


# What Impact Does DEEP Have?

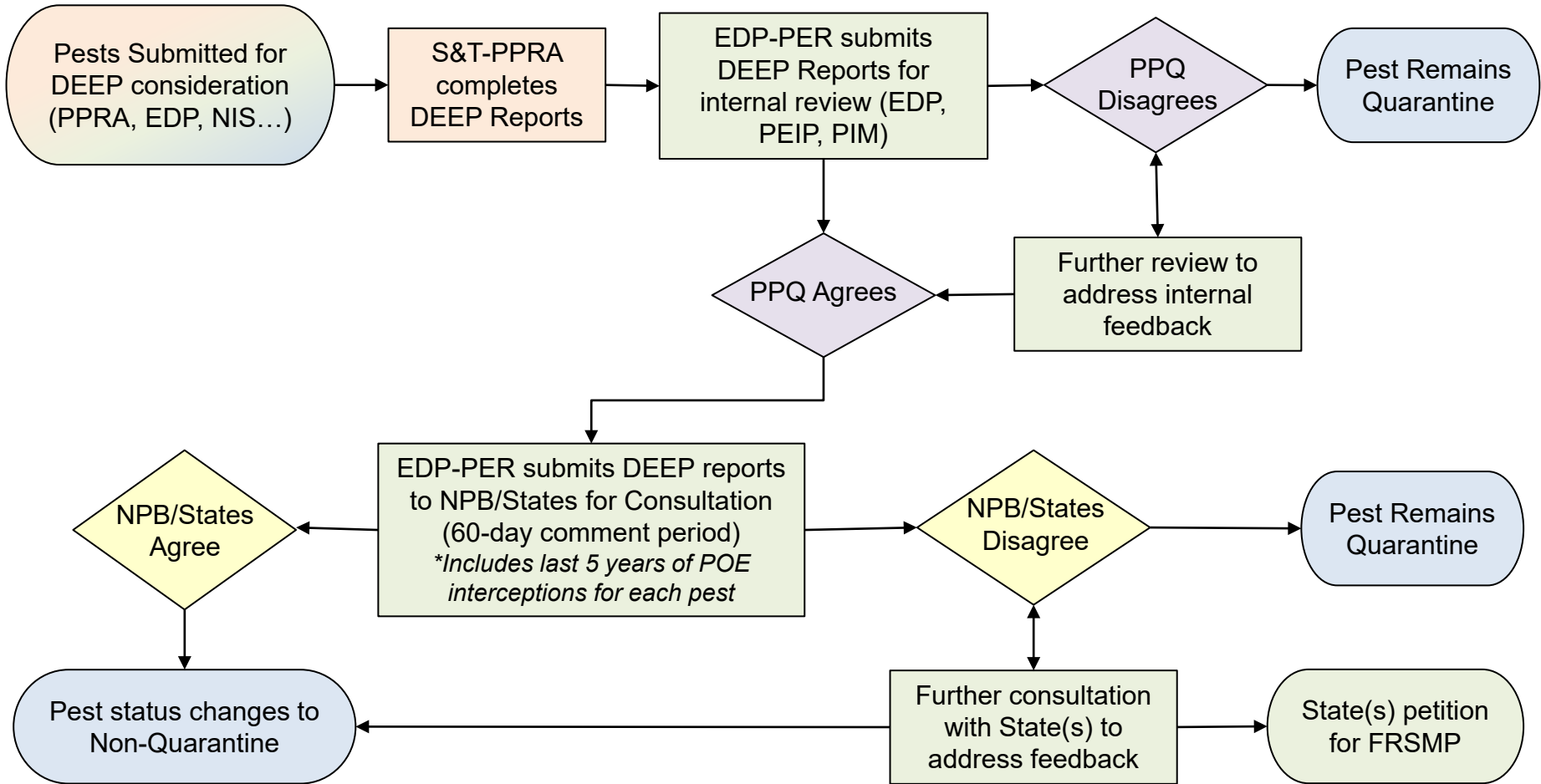
- APHIS no longer takes regulatory action on these pests at specified POE
  - Consistent with U.S. trade policy and fulfills international agreements while promoting safe trade
- APHIS continues successful collaboration with the National Plant Board (NPB) by presenting DEEP pests for consultation twice a year
  - States may petition for a Federally Recognized State-Managed Phytosanitary (FRSMP) Program
- Refer to the [Pests No Longer Regulated at U.S. POE](#) for the most updated list of deregulated pests and their POE exceptions



WORLD TRADE  
ORGANIZATION



# DEEP Process



PPQ CFA: EDP-PER S&T-PPRA PEIP-NIS

Start / End   Decision   Process