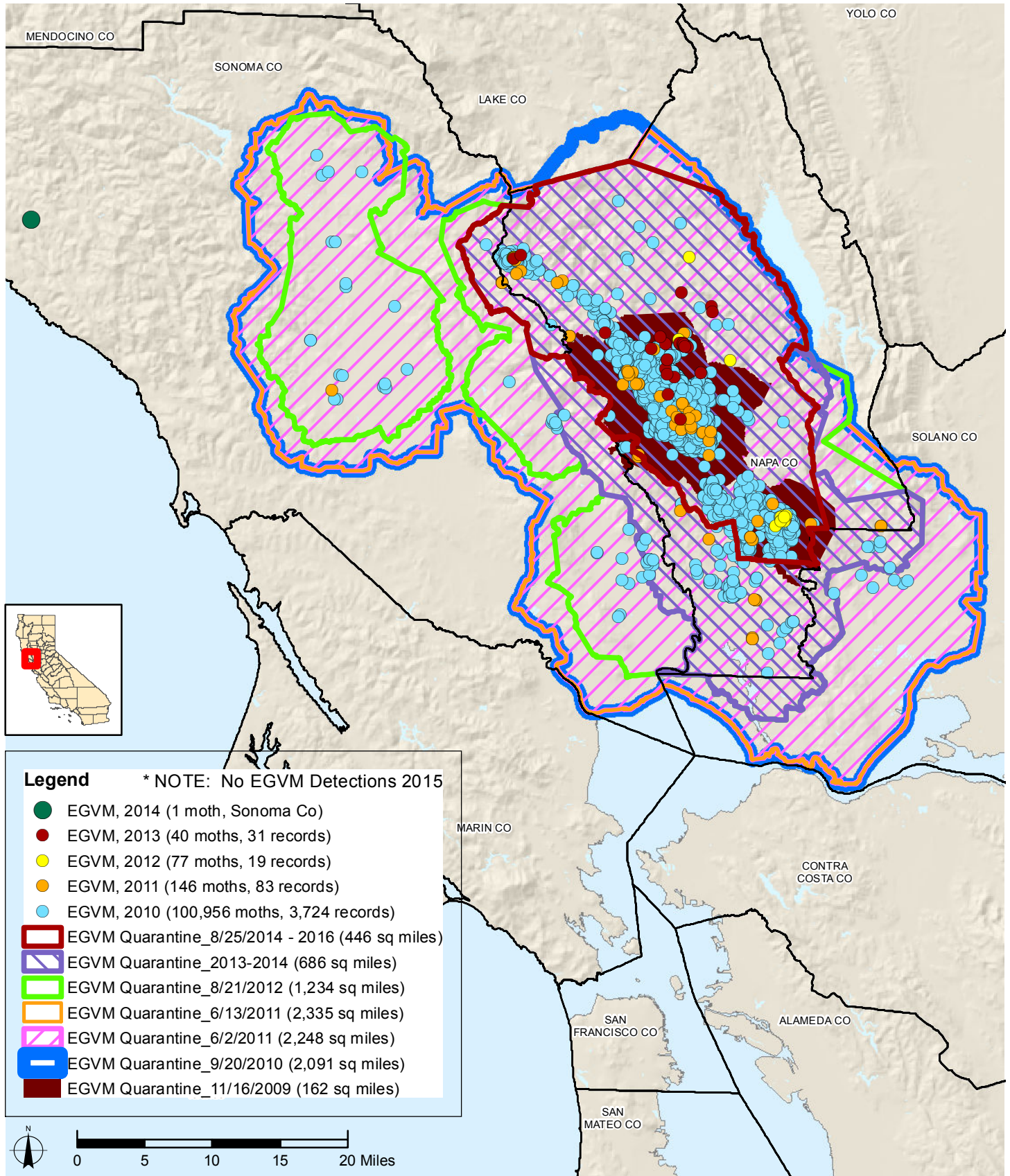


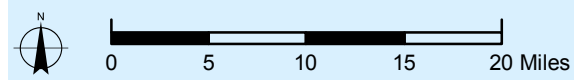


# Detections of European Grapevine Moth (*Lobesia botrana*) Napa Co and Surrounding Area, California 2010 - 2015 \*



**Legend** \* NOTE: No EGVM Detections 2015

- EGVM, 2014 (1 moth, Sonoma Co)
- EGVM, 2013 (40 moths, 31 records)
- EGVM, 2012 (77 moths, 19 records)
- EGVM, 2011 (146 moths, 83 records)
- EGVM, 2010 (100,956 moths, 3,724 records)
- ▭ EGVM Quarantine\_8/25/2014 - 2016 (446 sq miles)
- ▭ EGVM Quarantine\_2013-2014 (686 sq miles)
- ▭ EGVM Quarantine\_8/21/2012 (1,234 sq miles)
- ▭ EGVM Quarantine\_6/13/2011 (2,335 sq miles)
- ▭ EGVM Quarantine\_6/2/2011 (2,248 sq miles)
- ▭ EGVM Quarantine\_9/20/2010 (2,091 sq miles)
- ▭ EGVM Quarantine\_11/16/2009 (162 sq miles)



USDA, APHIS, PPQ  
GIS Specialist - California  
650 Capitol Mall, Suite 6-400  
Sacramento, CA 95814

Data Source:  
USDA, APHIS, PPQ  
County Departments of Agric  
CA Dept of Food & Agriculture  
TeleAtlas Dynamap

These data, and all the information contained therein, have been collected by the U.S. Department of Agriculture's Animal and Plant Health Inspection Service (APHIS), or by its cooperators on APHIS' behalf, for restricted government purposes only and is the sole property of APHIS. Data may be disseminated on a need-to-know basis only and must be used for their intended government purpose(s). All information contained within these data are subject to required Federal safeguards and shall only be shared and/or used consistent with the Trade Secrets Act [18 U.S.C. 1905], the Privacy Act of 1974, as amended [5 U.S.C. 552a], the Freedom of Information Act [5 U.S.C. 552], the confidentiality provisions of the Food Security Act of 1985 [7 U.S.C. 2276], Section 1619 of the Food, Conservation, and Energy Act of 2008 [7 U.S.C. 8791], and other applicable Federal laws and implementing regulations, as well as with the confidentiality or non-disclosure provisions of any other agreement entered into between APHIS and a cooperator.

Date Printed: 2/26/2016  
Time Printed: 09:41 hrs PT

Coordinate-System:  
CA Teale Albers, NAD 83