



United States
Department of
Agriculture

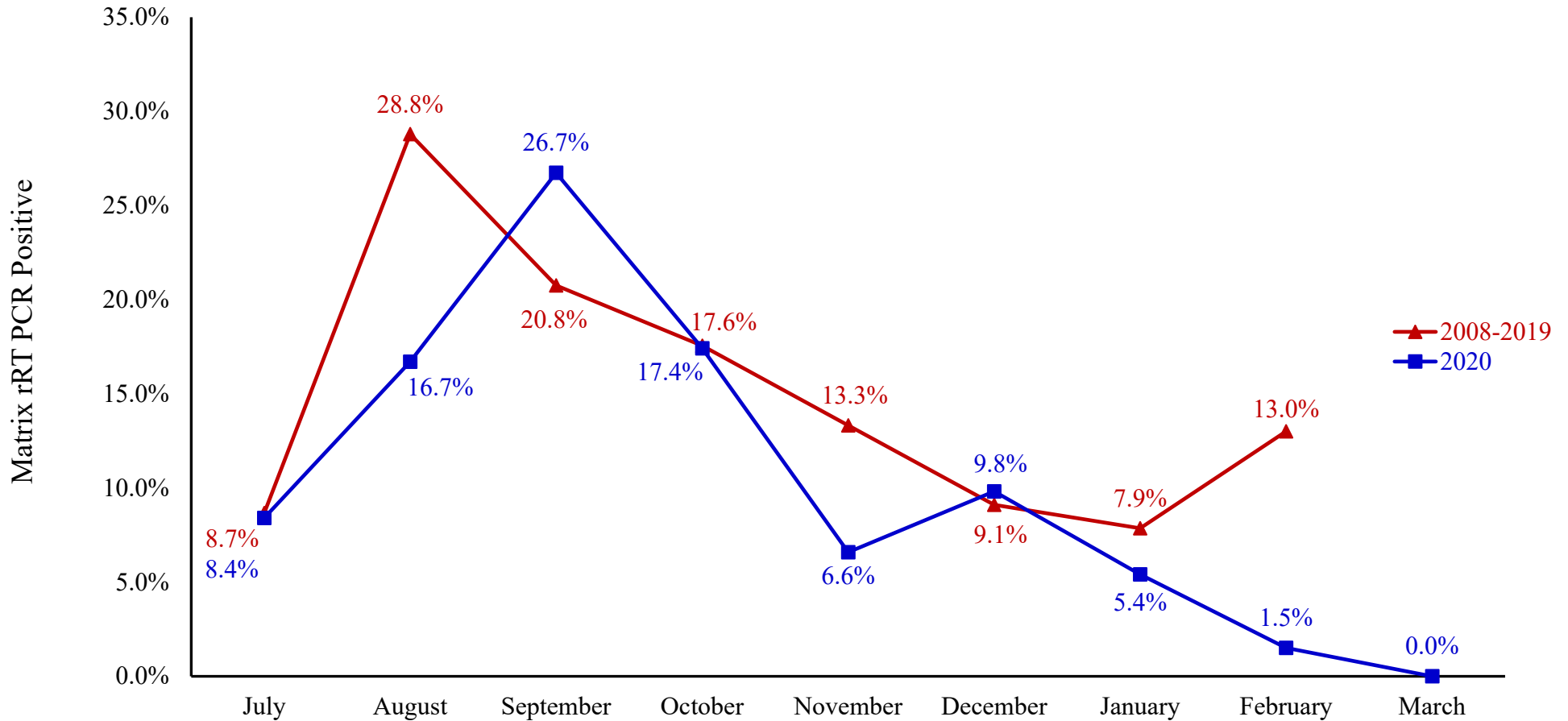


NATIONAL FLYWAY COUNCIL
Pacific est. 1952 - Central est. 1948 - Mississippi est. 1952 - Atlantic est. 1952



Monthly Summary Data from the National Wild Bird Avian Influenza Surveillance Program:

Graph 1. Percent of wild duck samples positive for low pathogenic Type A influenza viruses as determined by rRT-PCR.



Updated June 2021



United States
Department of
Agriculture

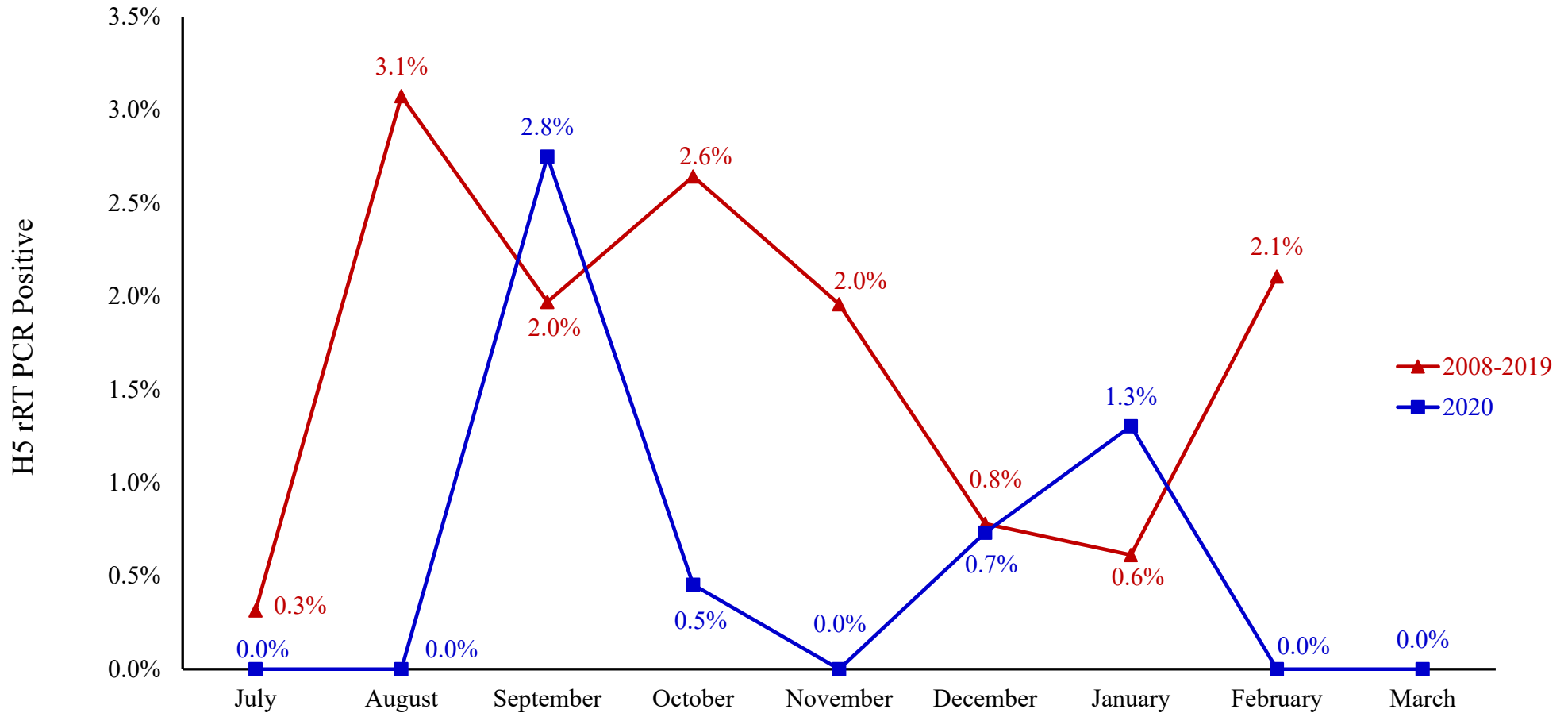


NATIONAL FLYWAY COUNCIL
Pacific est. 1952 - Central est. 1948 - Mississippi est. 1952 - Atlantic est. 1952



Monthly Summary Data from the National Wild Bird Avian Influenza Surveillance Program:

Graph 2. Percent of wild duck samples positive for low pathogenic H5 influenza viruses as determined by rRT-PCR.



Updated June 2021



United States
Department of
Agriculture

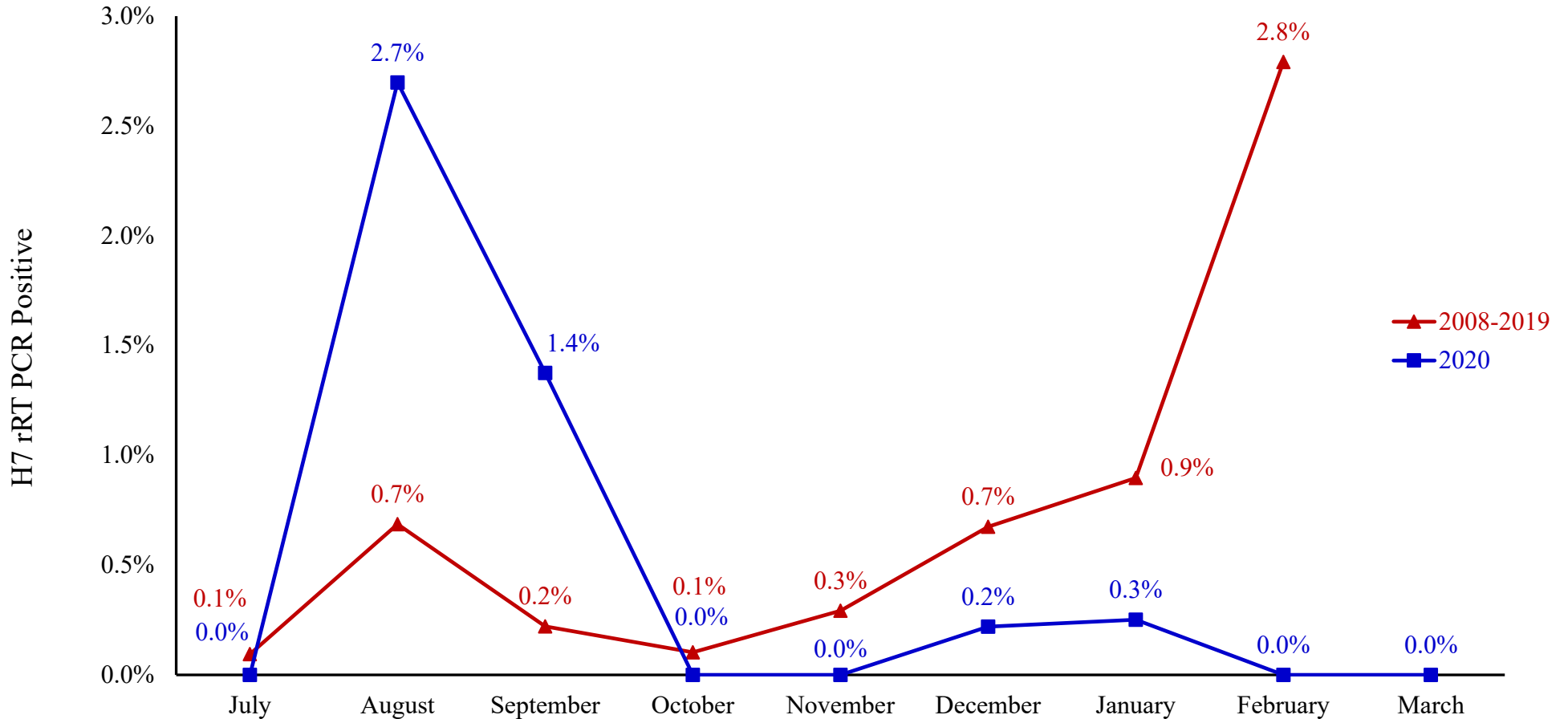


NATIONAL FLYWAY COUNCIL
Pacific est. 1952 - Central est. 1948 - Mississippi est. 1952 - Atlantic est. 1952



Monthly Summary Data from the National Wild Bird Avian Influenza Surveillance Program:

Graph 3. Percent of wild duck samples positive for low pathogenic H7 influenza viruses as determined by rRT-PCR



Updated June 2021