

SAVING MONKEYS - PROMOTING COMPASSION



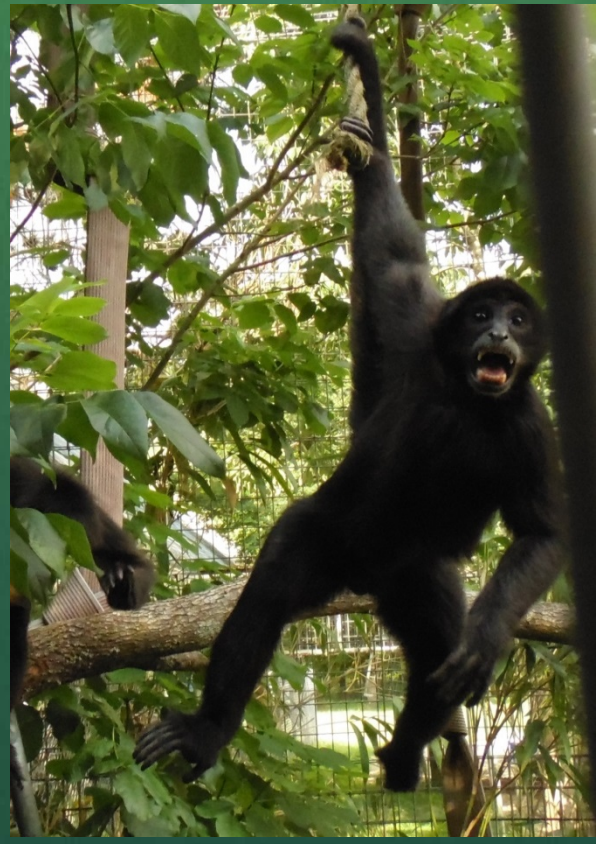
JUNGLE FRIENDS  
PRIMATE SANCTUARY





# Functionally Appropriate Environments for Squirrel Monkeys, Spider Monkeys and Capuchins

JUNGLE FRIENDS  
PRIMATE SANCTUARY



Presented by Kari Bagnall, Founder & Executive Director  
Jungle Friends Primate Sanctuary – Gainesville, FL





# Functionally Appropriate Squirrel Monkey Environments



Scout, Eve and Betsy





# Naturalistic Habitats

JUNGLE FRIENDS  
PRIMATE SANCTUARY



Trees are not only home to insects, they offer wonderful hiding places in case of an argument or if someone just needs some alone time.





# Tree Climbing

JUNGLE FRIENDS  
PRIMATE SANCTUARY

Herbie and  
Kilroy enjoy  
sitting high up  
in the trees.







# Squirrel Monkeys Enjoy Trees!

JUNGLE FRIENDS  
PRIMATE SANCTUARY



Judy seemed to remember her life before the lab. On her first day, she was outside climbing in the trees and catching bugs.





# Naturalistic Environments

JUNGLE FRIENDS  
PRIMATE SANCTUARY



Earl felt this tree was planted in the wrong place, some monkeys, like Betsy here, are happy with any tree!





# Tight Rope Walking

JUNGLE FRIENDS  
PRIMATE SANCTUARY

Ringo is an amazingly talented tight-rope walker!



Van Gogh & Ernie are learning the ropes.





# Foraging

JUNGLE FRIENDS  
PRIMATE SANCTUARY



Joey and Earl enjoy digging in the dirt in search of all sorts of crawly things.





# Gleaning Arthropods from Leaf Cavities

JUNGLE FRIENDS  
PRIMATE SANCTUARY



The squirrel monkeys roll the dead leaves between their hands in search of tasty insects, and sometimes what one finds – the other wants.





JUNGLE FRIENDS  
PRIMATE SANCTUARY

# Acclimating to Carestaff and New Environment



We duplicated enrichments used by the lab in their enclosures, along with a few new items.



Squirrel monkey trio: Manny, Moe and Jack.



# Room for 57 Squirrel Monkeys?



We were given only a few months to prepare for 57 squirrel monkeys. A tall order, but our amazing staff made it happen.







# Habitats & Buildings

JUNGLE FRIENDS  
PRIMATE SANCTUARY



Emerald City – the new Squirrel Monkey Retirement Home.





# Accommodations for the New Squirrel Monkeys







# Outdoor Habitats & Runways

JUNGLE FRIENDS  
PRIMATE SANCTUARY



The squirrel monkeys arrived in July. We put up shade cloth, planted lots of plants and installed a mister system.





# Outdoor Habitats

JUNGLE FRIENDS  
PRIMATE SANCTUARY



They had hula hoops at the lab,  
so we situated them in their outdoor habitats.





# Outdoor Habitats

JUNGLE FRIENDS  
PRIMATE SANCTUARY



The squirrel monkey habitats offer many levels, from hammocks, ropes and trees, to shrubbery and ground cover for foraging.





# Outdoor Habitats

JUNGLE FRIENDS  
PRIMATE SANCTUARY



The new squirrel monkeys really took to the outdoor life.





# Indoor Enclosures

JUNGLE FRIENDS  
PRIMATE SANCTUARY

Even with the shade cloth and misters, the new squirrel monkeys had to stay inside the climate controlled building during the warmest times of the day, until they could acclimate to outdoor temperatures.







# Indoor Enclosures

JUNGLE FRIENDS  
PRIMATE SANCTUARY







# Variety, Choices and Friends

JUNGLE FRIENDS  
PRIMATE SANCTUARY



At Jungle Friends our squirrel monkey environments offer large naturalistic habitats with plenty of fauna and flora for enrichment. The monkeys have the option of going inside or outside, locking them in only during inclement weather.





JUNGLE FRIENDS  
PRIMATE SANCTUARY

# Functionally Appropriate Spider Monkey Environments







# The "Thunderdome"

JUNGLE FRIENDS  
PRIMATE SANCTUARY



A group of four spider monkeys live in this habitat, which is 30' x 60' x 24' high.





# Larger Runways

JUNGLE FRIENDS  
PRIMATE SANCTUARY



The spider monkey's runways are much larger and the forks are large and almost unmanageable, so we installed gates.





# Spider Monkey Habitat



Spider monkeys use ropes for brachiating and swinging .





# Spider Monkey Habitat

JUNGLE FRIENDS  
PRIMATE SANCTUARY



The spider monkeys also walk bipedal, so that needs to be taken into consideration when building and furnishing their habitats.





# Inside Thunderdome

JUNGLE FRIENDS  
PRIMATE SANCTUARY







# Environmental Enrichment

JUNGLE FRIENDS  
PRIMATE SANCTUARY



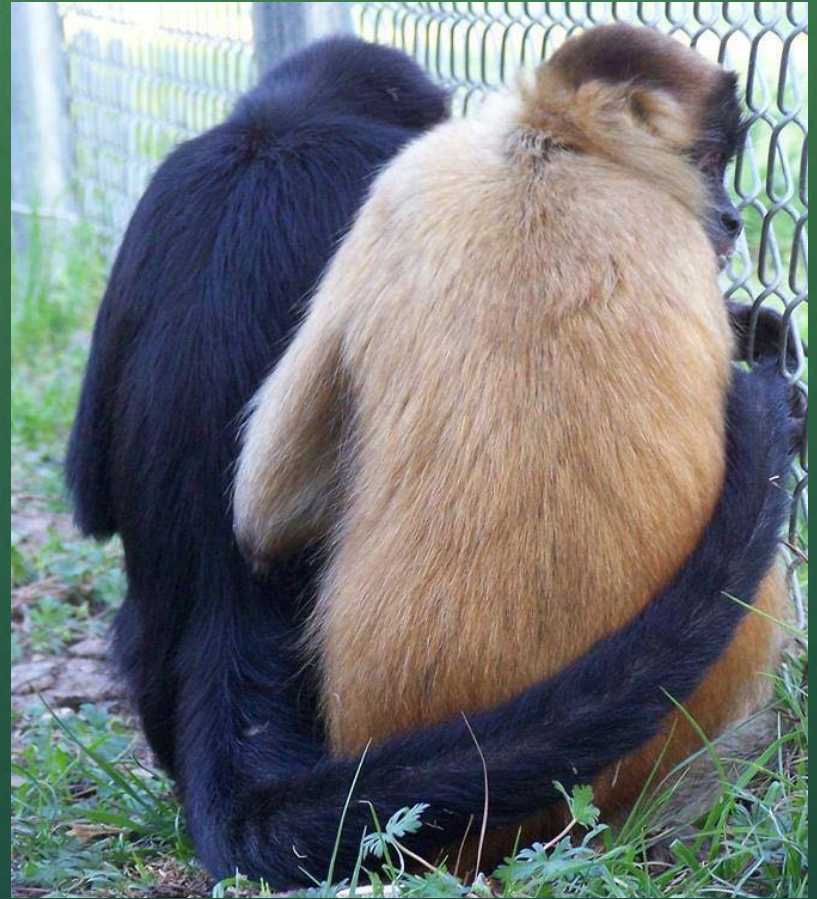
The spider monkeys use these barrels to hide in, swing in, sleep in and a place to get out of the rain or enjoy some alone time.





# Social Groupings

JUNGLE FRIENDS  
PRIMATE SANCTUARY







# Natural Enrichment

JUNGLE FRIENDS  
PRIMATE SANCTUARY



Spider monkeys are leaf eaters, so have plenty of edible plants and trees.  
Fruiting trees are especially nice.




# Spider Monkeys Anointing with Fig Leaves



Mike is anointing with fig leaves.



And so is Clydette – who is female!







# No Fig Leaves – No Problem...

JUNGLE FRIENDS  
PRIMATE SANCTUARY



Limes are also a favorite for anointing, It not only gives the monkeys a nice lime-fresh fragrance, citris is great for deterring bugs.





JUNGLE FRIENDS  
PRIMATE SANCTUARY

# Functionally Appropriate Capuchin Environments







# Naturalistic Habitats

JUNGLE FRIENDS  
PRIMATE SANCTUARY







# Capuchin Habitats and Runways

JUNGLE FRIENDS  
PRIMATE SANCTUARY







# Outdoor Furnishings

JUNGLE FRIENDS  
PRIMATE SANCTUARY

- ✓ Hammocks: under roof and in the sun & under the heat cave.
- ✓ Jungle Gyms and metal ladders.
- ✓ Rope ladders and ropes with toys.
- ✓ Hanging ropes and trapezes.
- ✓ Buckets and barrels.
- ✓ Boomer Balls.
- ✓ Sand box in middle of habitat under roof.
- ✓ Grounders (trees or stumps) on the floor of habitat.
- ✓ Perches extending to floor from heat caves, runways & H2O
- ✓ Shrubbery, trees & plants including; Banana Plants, Bamboo, Wild Ginger, Canna Lilies, Cast Iron, Ferns, and others inside and outside of the habitat.
- ✓ Two or more Lixits (automatic waterers)





# Jersey Learns about the Automatic Water System

The Lixits, or automatic waterers, helps to relieve the worry of dehydration.

The monkeys also use them to bathe and cool down in the heat.

They have also been known to squirt other monkeys, and even our carestaff!







# Capuchin Environments

JUNGLE FRIENDS  
PRIMATE SANCTUARY

Habitats are curved, not only for structural strength, but the curves give us “bump outs” to give separate areas for the monkeys to retreat to if there is a disagreement . There is plenty of shrubbery to hide in for privacy.







# Monkey Delivery

JUNGLE FRIENDS  
PRIMATE SANCTUARY



These monkeys arrived in January and were actually delivered to Jungle Friends in their lab cages, which we used until we could release them into their outdoor habitats when the weather warmed up.





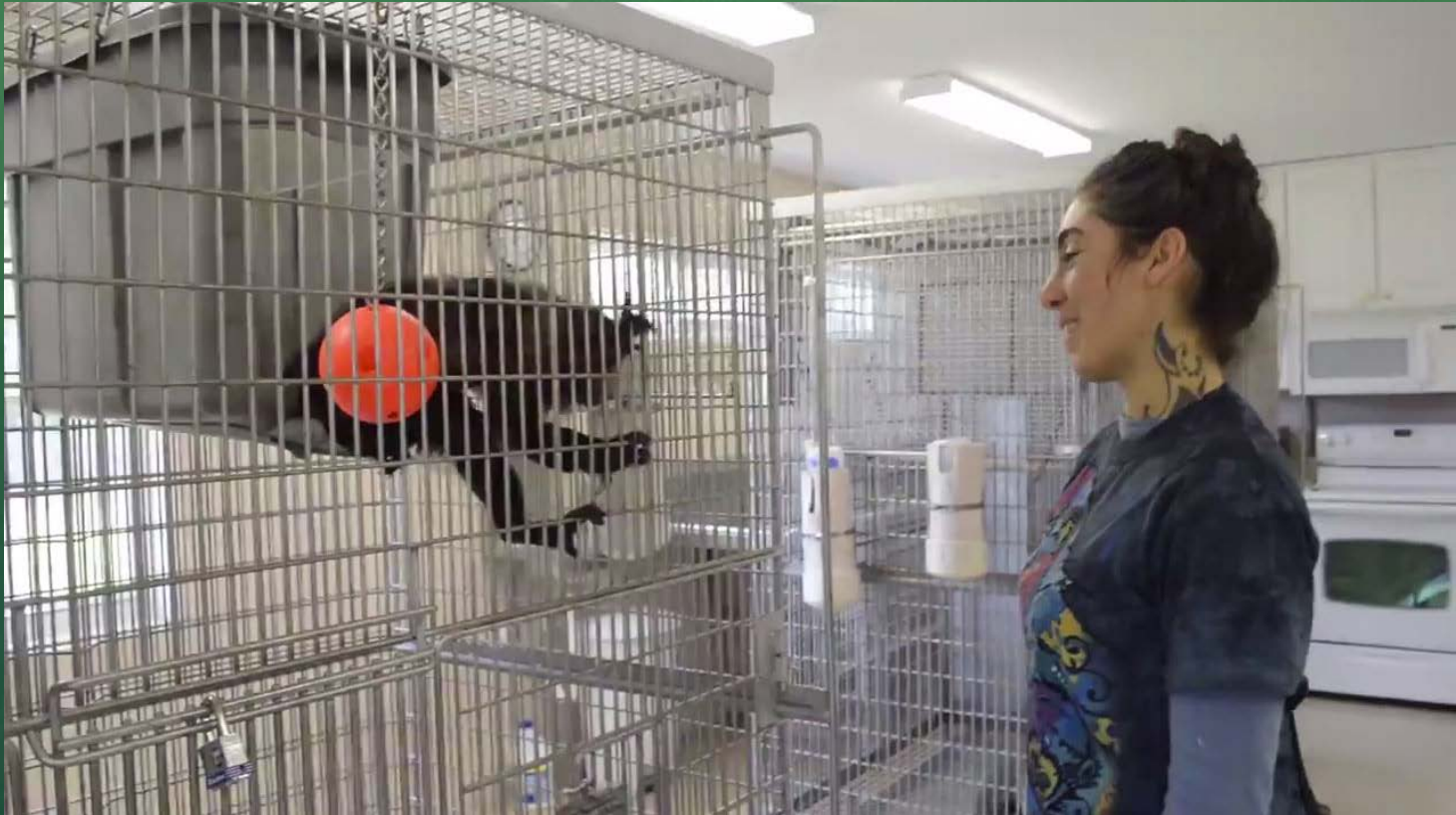
# Monkeys were Offloaded in Lab Cages into our Clinic



Fortunately, we were able to roll them outside during the day to gradually introduce them to sunshine, fresh air, wind and rain.



# New Enrichment Items were Added Slowly



The cages were stark, but included a hide box, a ring and a ball. We also introduced them to plants and new foods while they were in the clinic.





# Bob Barker Medical Clinic

JUNGLE FRIENDS  
PRIMATE SANCTUARY

The UGA Boys also arrived with their “home” cages. We set up these cages the same way they were set up at the lab.



They stayed in these cages until they were settled in and comfortable with our carestaff.







# Runway System

JUNGLE FRIENDS  
PRIMATE SANCTUARY

The runway system runs throughout the sanctuary connecting all of the habitats.

We also have the drop-down chutes located at optimal locations throughout the sanctuary for safe capture.







# Runway System

JUNGLE FRIENDS  
PRIMATE SANCTUARY



Runways provide choices and make it easy and less stressful when moving monkeys to new habitats. The runways are also an important part of our socialization procedure.



# Drop-Down Chutes = Less Stress



Drop-down chutes on the runways are very helpful tools for a safe capture. Monkeys are easily moved from the drop-down chutes to the clinic or other habitats.





JUNGLE FRIENDS  
PRIMATE SANCTUARY

# Drop-Down Chutes and Walking Forks



Because the monkeys are fed in the runways and move through the runways into new habitats, they have no fear of the runways.



# Releasing Monkeys into Habitats through Runways



We have released monkeys into the runways from squeeze cages and kennels. It is easiest with sliding doors, however, it can be done with doors that swing out.





# Runways & Introductions

JUNGLE FRIENDS  
PRIMATE SANCTUARY



Runways are great socialization tools. Monkeys can meet in the runways with forks between them. The forks are moved gradually closer. If it looks like they will be a good match, one fork is removed. If they groom through the fork, we remove it and hope for a good outcome. We also use portable shade for the runways as shown in the first photo.





# Social Grooming

JUNGLE FRIENDS  
PRIMATE SANCTUARY



Grooming is a natural stress reliever for monkeys.





# Natural Enrichment

JUNGLE FRIENDS  
PRIMATE SANCTUARY



Heat lamps are attached to the outside of the habitats to heat the caves inside the habitats, which are controlled by thermostats.





# Natural Enrichment

JUNGLE FRIENDS  
PRIMATE SANCTUARY



We cannot give the monkeys back the “wild”, so at Jungle Friends we create an “Almost Wild” environment. We want the monkeys to live as comfortable and as natural as possible.





# Natural Enrichment

JUNGLE FRIENDS  
PRIMATE SANCTUARY



Monkeys love plants.





# Natural Enrichment

JUNGLE FRIENDS  
PRIMATE SANCTUARY







# Comfy Naptime Spots

JUNGLE FRIENDS  
PRIMATE SANCTUARY



Our substrates are natural:  
grass, leaves, ground cover, mulch, dirt, sand and pine straw.





# Monkeys Love to Dig and Bathe in Dirt

JUNGLE FRIENDS  
PRIMATE SANCTUARY



Jersey enjoys a good dirt bath –  
a little dirt can strengthen your immune system.





# Foraging

JUNGLE FRIENDS  
PRIMATE SANCTUARY







# Foraging Outside the Box

JUNGLE FRIENDS  
PRIMATE SANCTUARY



Samantha goes fishing





# Shade Trees

JUNGLE FRIENDS  
PRIMATE SANCTUARY



We plant lots of trees, and even though we are in Florida, it can get cool. Trees that lose their leaves in the winter allow the sun to shine through.





# Water Enrichment

JUNGLE FRIENDS  
PRIMATE SANCTUARY



Beat the heat with a pool, hose, or what we call “monkey rain”.





# All Monkeys Deserve a Nice Place to Live!

JUNGLE FRIENDS  
PRIMATE SANCTUARY







**JUNGLE FRIENDS**  
PRIMATE SANCTUARY

*Saving Monkeys*  
*Promoting Compassion*

**Kari Bagnall, Founder & Executive Director**  
**karibagnall@junglefriends.org**

**[www.JungleFriends.org](http://www.JungleFriends.org)**