



Animal and Plant Health Inspection Service
U.S. DEPARTMENT OF AGRICULTURE

DO a Pig a Favor!

Activity Book



Learn to keep U.S. swine safe.

BE A PIG PROTECTOR

African swine fever (ASF) is a contagious virus that kills pigs. People can't get sick from it, but they can spread it. **This disease has never been detected in the United States — will you help us keep it that way?** Check out these puzzles and share what you learn to keep the U.S. fever free!



SEARCH FOR SIGNS

African swine fever can look like other pig sicknesses. Spot the signs hiding in the puzzle.

WORD STY

HIGH FEVER
DECREASED APPETITE
WEAKNESS
BLOTCHY SKIN
LESIONS
DIARRHEA
VOMITING
COUGHING
TROUBLE BREATHING

E W K X D K Z Y W K P A L H H O W V Q G
I U Z V N A D O N V U M I X V I S I V Y
G F D E C R E A S E D A P P E T I T E L
M V J W K Z M C G N D Y J X H Q R E G E
J R E U K W H S P Y H I G H F E V E R S
Z O M X A Q N O Z R R B E I F O E J D I
I E J W H C S G U Y G J M K X C A Z T O
P F W Z W H A D S V W E O N D W A C M N
B T R O U B L E B R E A T H I N G U E S
A L Q D S F D K M F V I K T A D S I R V
N M O U G N A W J T B H V M R L J L X I
T K W T H K L R A K P J C X R B E Q M R
D Z N O C Y P X M C I H W N H Z A R V G
H B U V Q H L M T O P A R E E L B S P H
P S L G Z P Y R J U R U L X A G Q X V Q
W U G W X K B S P G Q D V N R K V O I P
S J H O L I Z E K H X Z T X C A N Y A L
M R X M H O A U L I B A P A X Y L E M D
B G E R E G L V P N N U S S H D R O S E
Q U V O M I T I N G W V O A T B T O V S



Did You Know?

African swine fever was first spotted outside of Africa in 1957, when it was detected on a pig farm in Portugal.



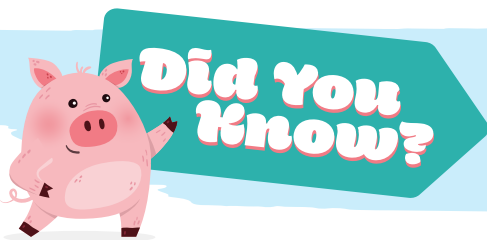
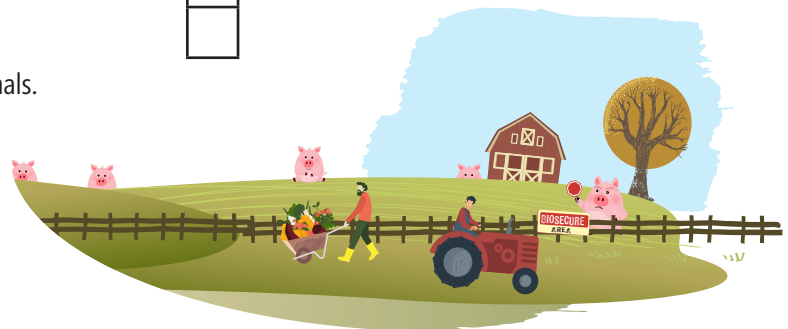
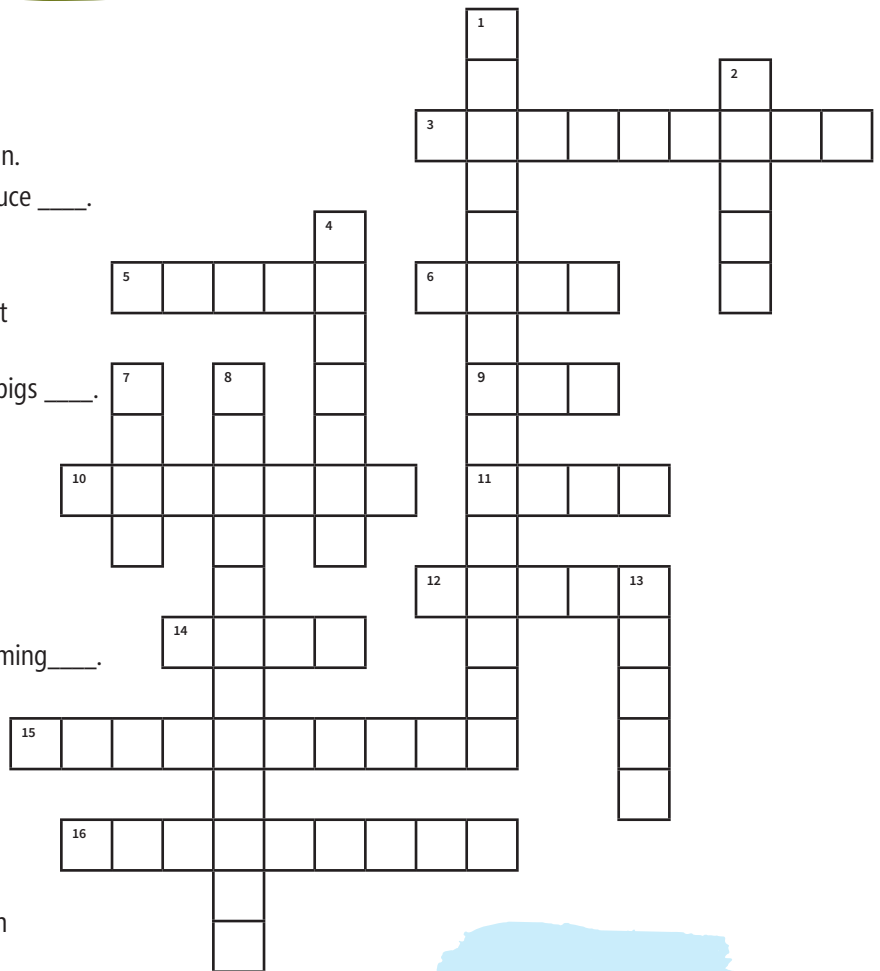
BIOSECURITY MEASURES are steps you can take to protect people or animals from diseases. Grab your pig pen and finish the puzzle to fatten up your biosecurity smarts.

ACROSS:

- 3. Don't feed this to pigs.
- 5. African swine fever is this well-known type of infection.
- 6. Limit on-farm traffic from people and vehicles to reduce ____.
- 9. Don't let people do this in animal areas — even if it's lunchtime.
- 10. The ASF virus can stick to these, so wear a fresh outfit for farm visits.
- 11. By working together, we can all help keep America's pigs ____.
- 12. Wash these before you visit pigs. And after you go to the bathroom, of course.
- 14. If this blood-sucking insect feeds on a sick pig, it can spread infection.
- 15. Because it passes easily from one pig to another, ASF is considered highly ____.
- 16. From tools to trailers, ASF can stick to all kinds of farming ____.

DOWN:

- 1. The disease has never been detected in this country, fondly called "the land of the free and the home of the brave." (3 words)
- 2. Another word for wild swine that can carry ASF.
- 4. All equipment and vehicles entering or leaving a farm should be ____.
- 7. Store feed where it can't be contaminated by ____ animals.
- 8. If you see signs of infection, have an adult call the USDA and a ____.
- 13. Clean these or you risk tracking trouble with each step.



Customs officers enforce biosecurity by monitoring the plant and animal products that people bring across borders. Detector dogs help them sniff out trouble!

THE TRIVIA TROUGH



QUIZ A PARENT OR FRIEND AND ADD UP THEIR POINTS TO TEST THEIR SWINE SAVVY

Q How many pigs are in the USA?

A 76 million
+1 point • TOTAL _____

Q What are other words that mean “pig”?

A Hog Boar Piggy Piglet
Swine Sow Porker

+1 point for every right answer, 7 total • TOTAL _____

Q Can people catch African swine fever?

A No, but they can spread it
+1 point • TOTAL _____

Q Is African swine fever deadly to pigs?

A Yes, it's up to 100% lethal for pigs
+1 point • TOTAL _____

Q How many countries have had cases of African swine fever?

A Over 110
+1 point • TOTAL _____

Q Has African swine fever ever been detected in the United States?

A No!
+1 point • TOTAL _____

Q Name ways pigs can catch African swine fever.

A Direct transmission from a sick pig to another pig
Contaminated feed
Garbage feeding
People eating in pig areas
Visitors who didn't disinfect their clothes, shoes, equipment, vehicles or hands
Transmission by insect

+1 point for every right answer, 6 total • TOTAL _____

Q Name signs of African swine fever.

A Fever Diarrhea
Decreased appetite Coughing
Weakness Vomiting
Red, blotchy skin Difficulty breathing
Skin lesions

+1 point for every right answer, 9 total • TOTAL _____

Q If you see signs of African swine fever, what should you do?

A Call the USDA for testing
Call a veterinarian for testing
+1 point for every right answer, 2 total • TOTAL _____

Q Where on the web can you find more information?

A www.aphis.usda.gov/ProtectOurPigs
+1 point • TOTAL _____

TOTAL SCORE

0-5: A LITTLE PIGNORANT

No offense, but you could stand to sniff out a little more learning. Learn how to fight African swine fever at

6-19: SNORTA SMART

Congrats – you have buckets of knowledge about keeping swine safe! Root around for more intel at

20-30: SLOPPY WITH KNOWLEDGE

You're a hoggone genius! Find sharable materials to make your friends as smart as you are at

www.aphis.usda.gov/ProtectOurPigs



JOURNEY TO JASPER



OH NO! Jasper the pig is showing signs of African swine fever. His owner noticed and called Jasper's veterinarian to come test for ASF. Complete the maze to help Dr. Jack reach his patient.

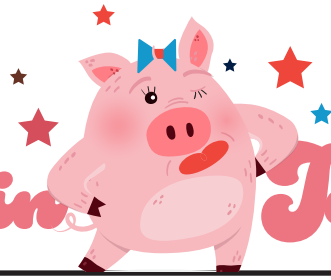


**Did You
Know?**

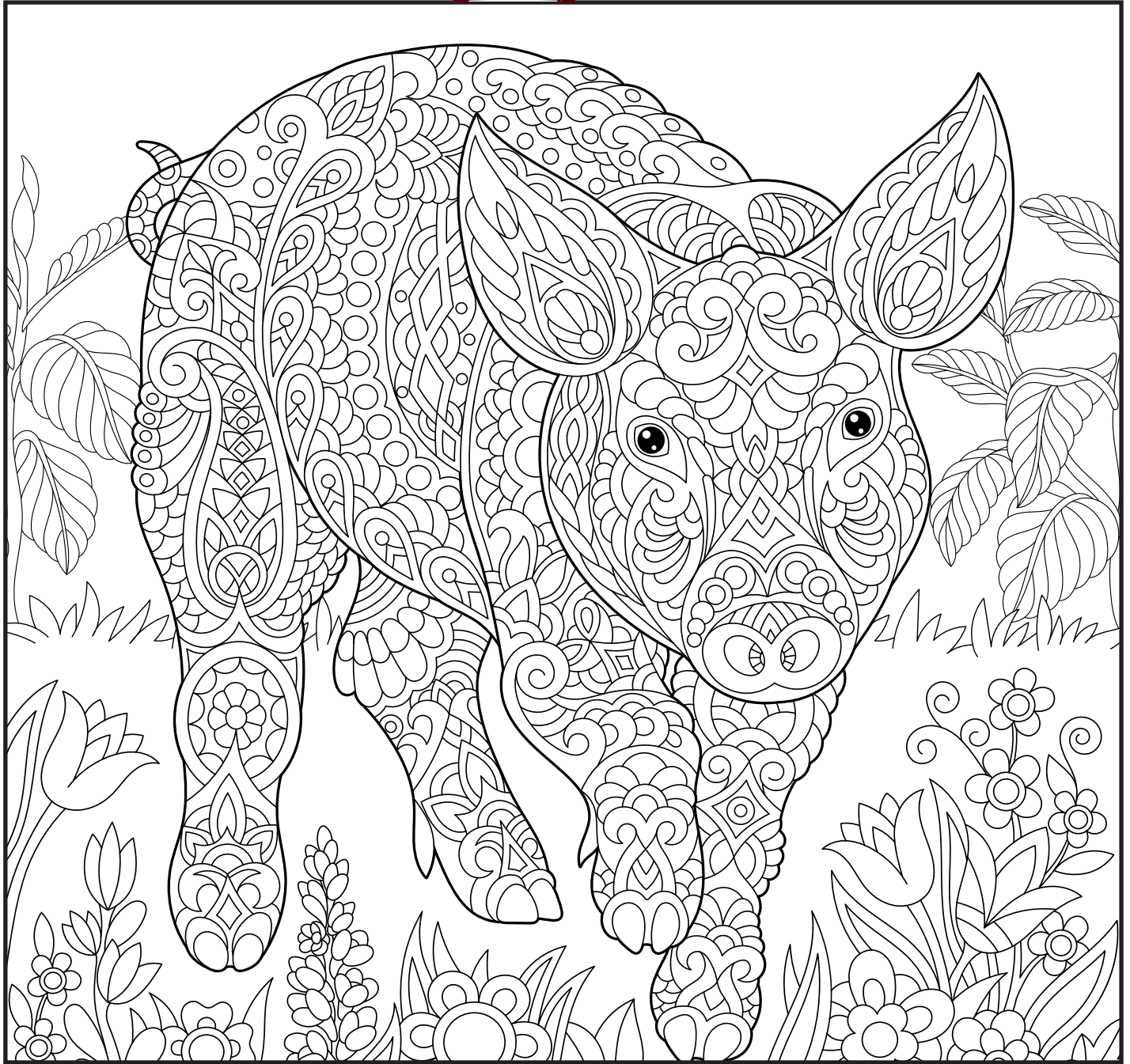


There are different kinds of veterinarians that take care of different animals. A “large animal” or “livestock” vet is the kind who cares for pigs.

Not-So-Plain Jane



Jane the pig is feeling a little drab. Grab your coloring tools and brighten up Jane's day.

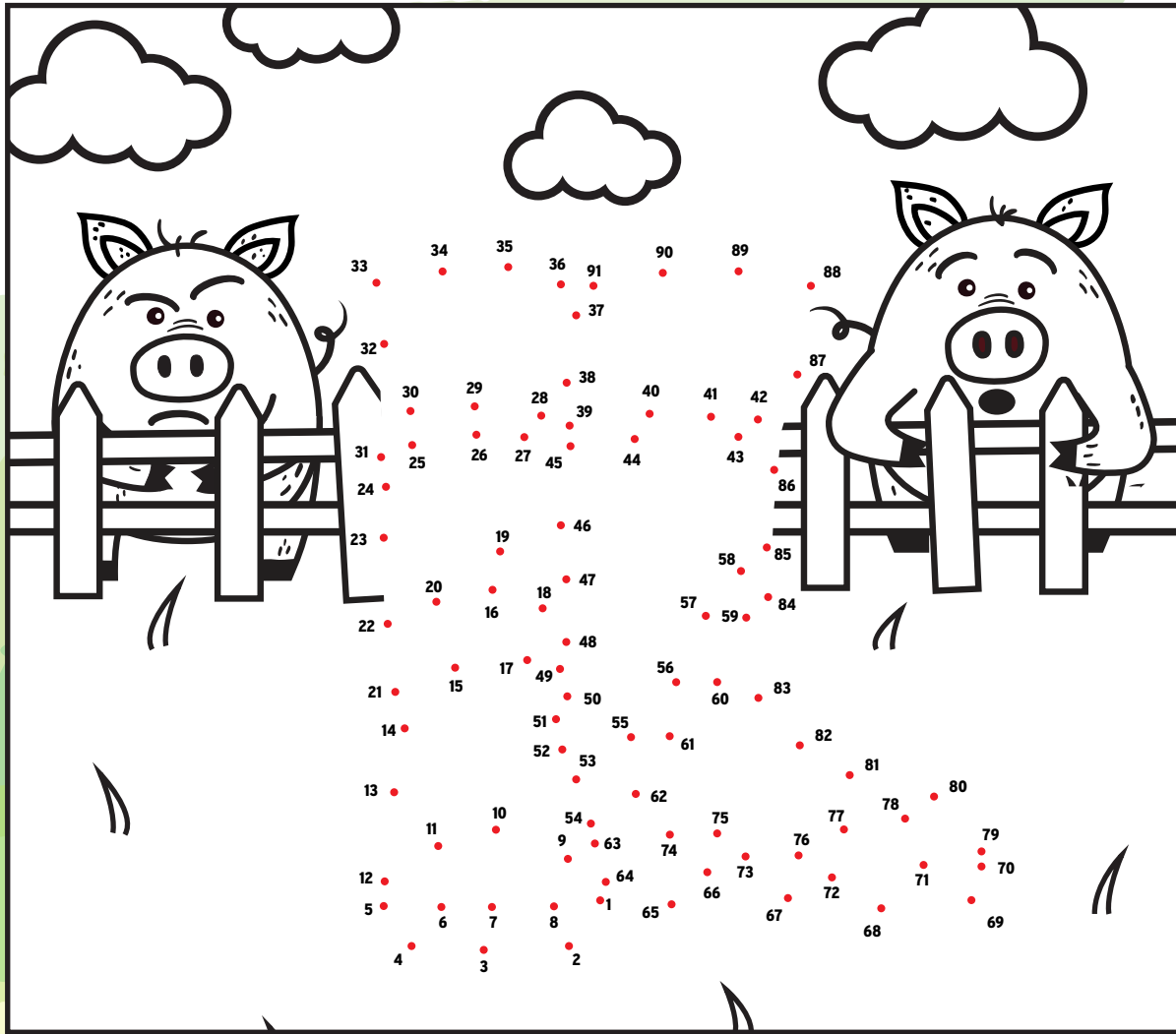
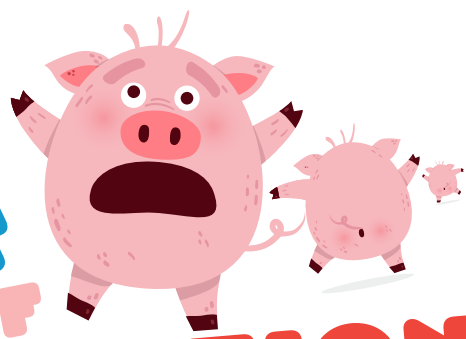


Did You Know?

Though they can't see as many hues as people can, pigs' vision is dichromatic – that means they can distinguish color!

DOT-TO-DOT OF DESTRUCTION

Connect the dots to reveal the danger.



HINT: If you want to stop trouble in its tracks, always disinfect this traveling twosome before and after a pig visit.

Did You Know?



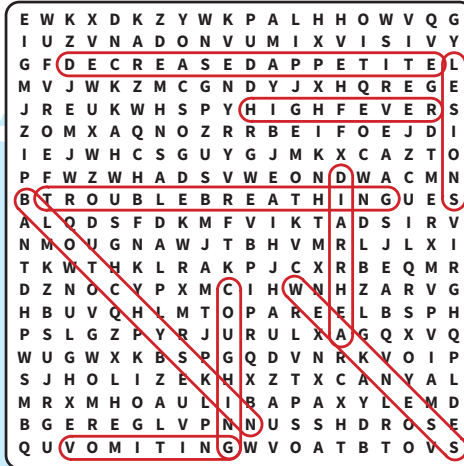
One biosecurity breach could be a big problem. If ASF made it to the United States, it would cost as much as \$75,000,000,000 over ten years.



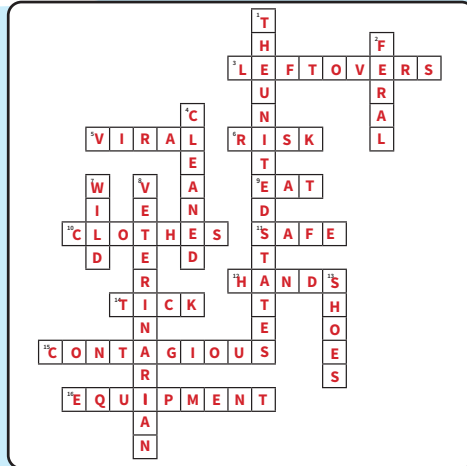
shhh

...IT'S THE ANSWERS!!

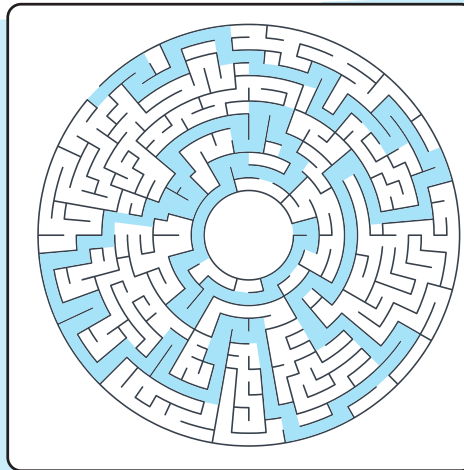
SEARCH FOR SIGNS



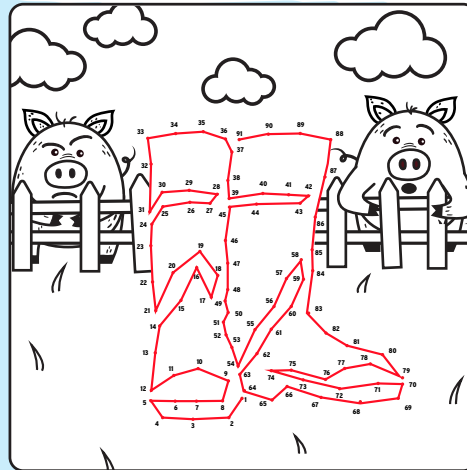
Biosecurity Cross Check



JOURNEY TO JASPER



DOT TO DOT OF DESTRUCTION



SPOT SIGNS OF AFRICAN SWINE FEVER?

Act fast! Have an adult contact a veterinarian for testing, or call the USDA at 1-866-536-7593.

Learn more at www.aphis.usda.gov/ProtectOurPigs

